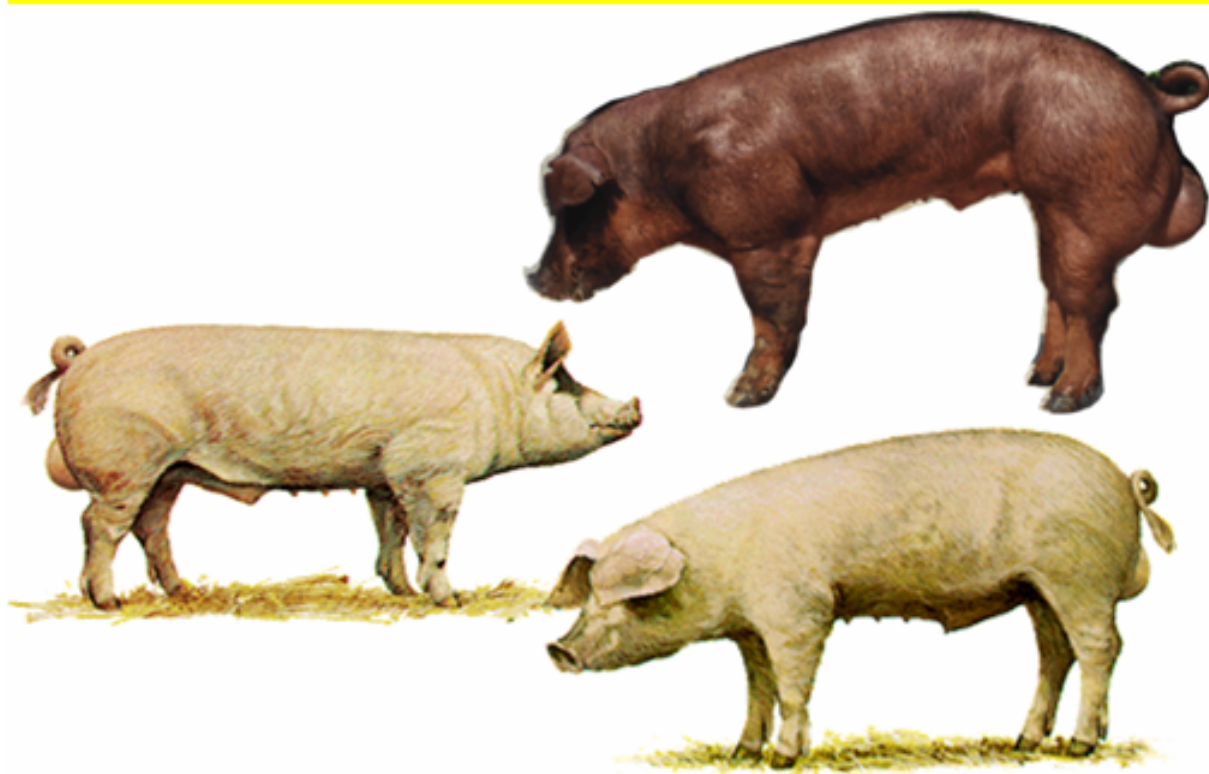




# 種豬登錄



配種卡

生產卡

轉移血統書

外觀審查

登錄證明書

繁殖性能追蹤

產肉性能追蹤

中央畜產會 王旭昌課長

國外種豬場

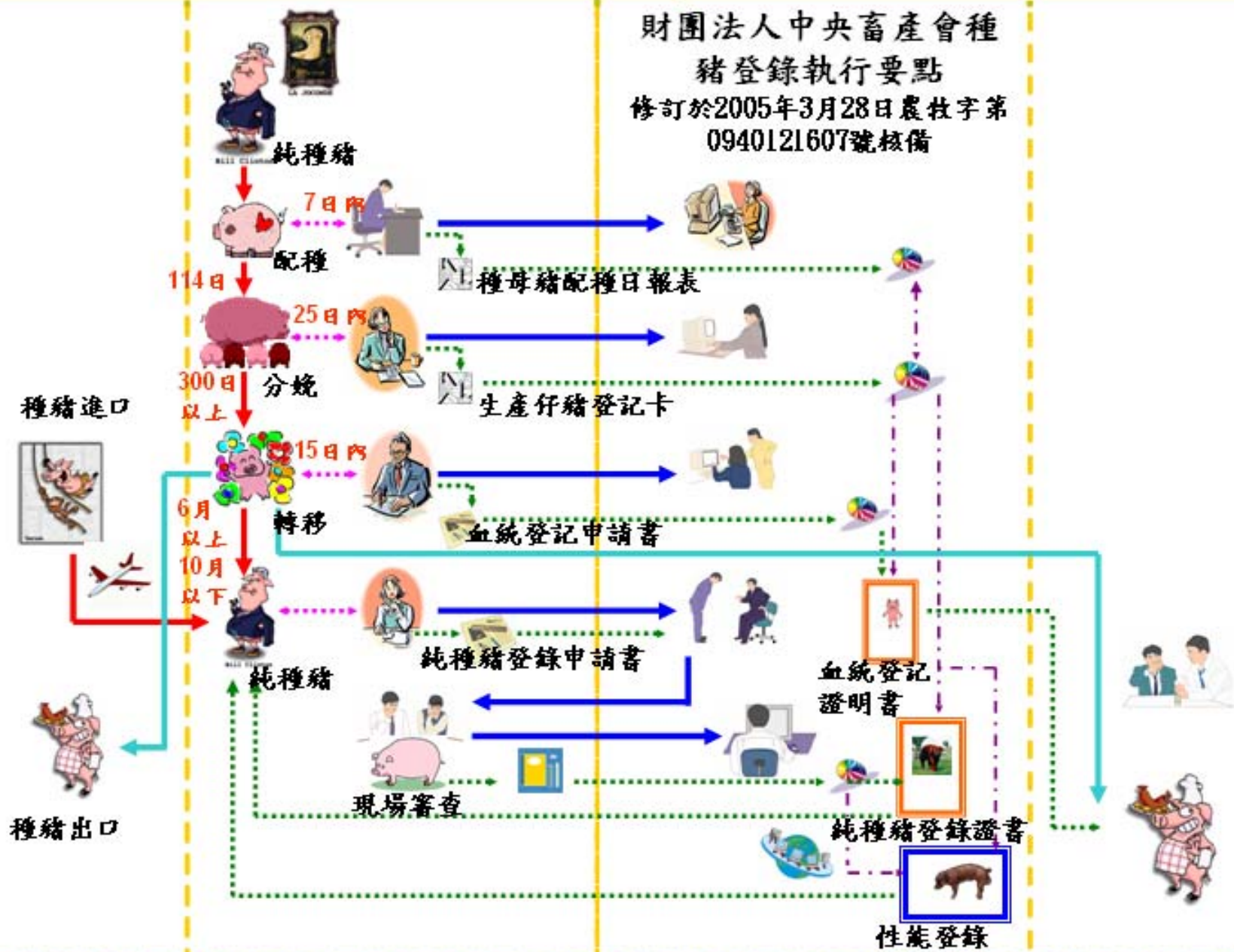
純種豬場



中央畜產會

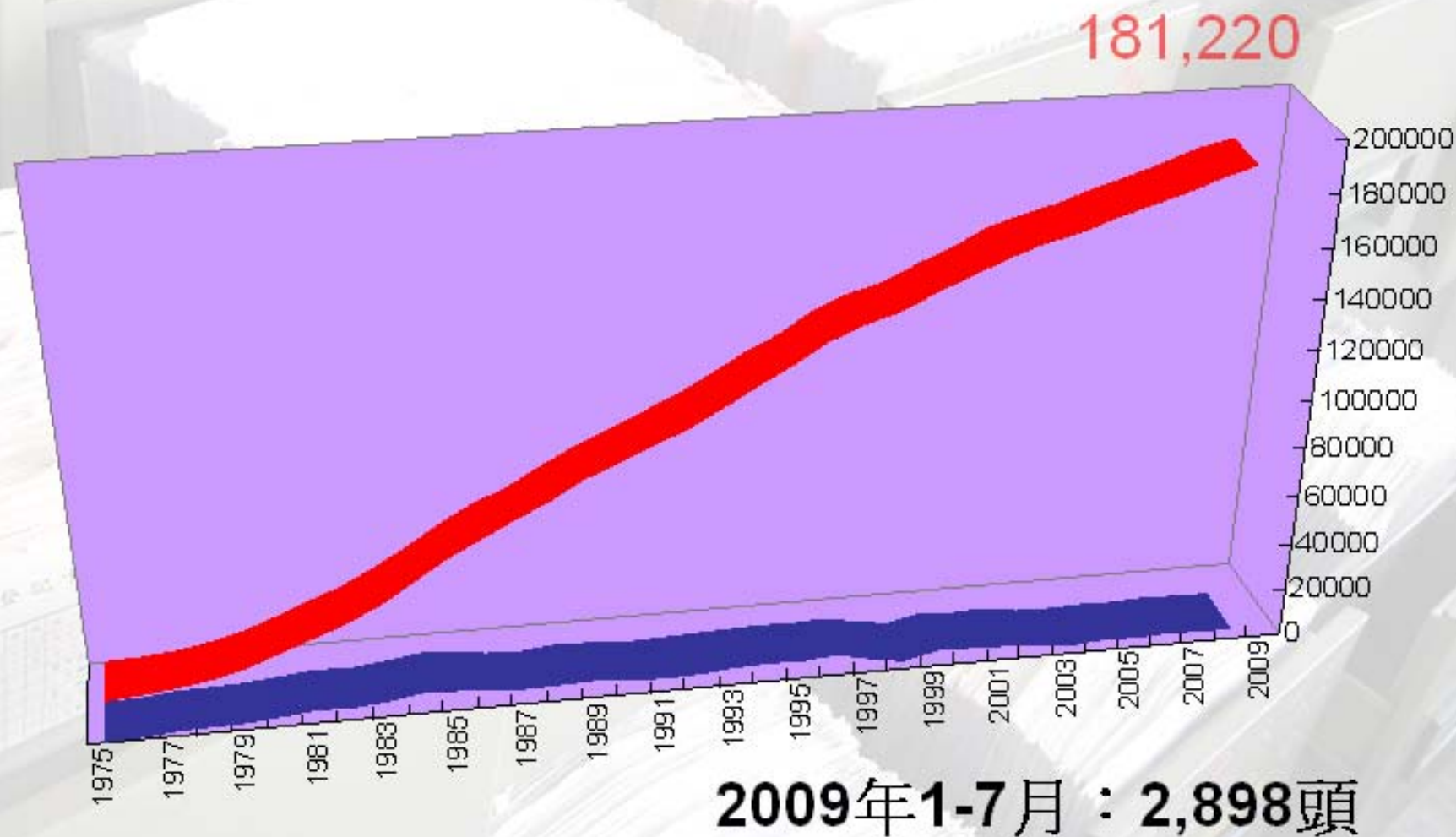
養豬場

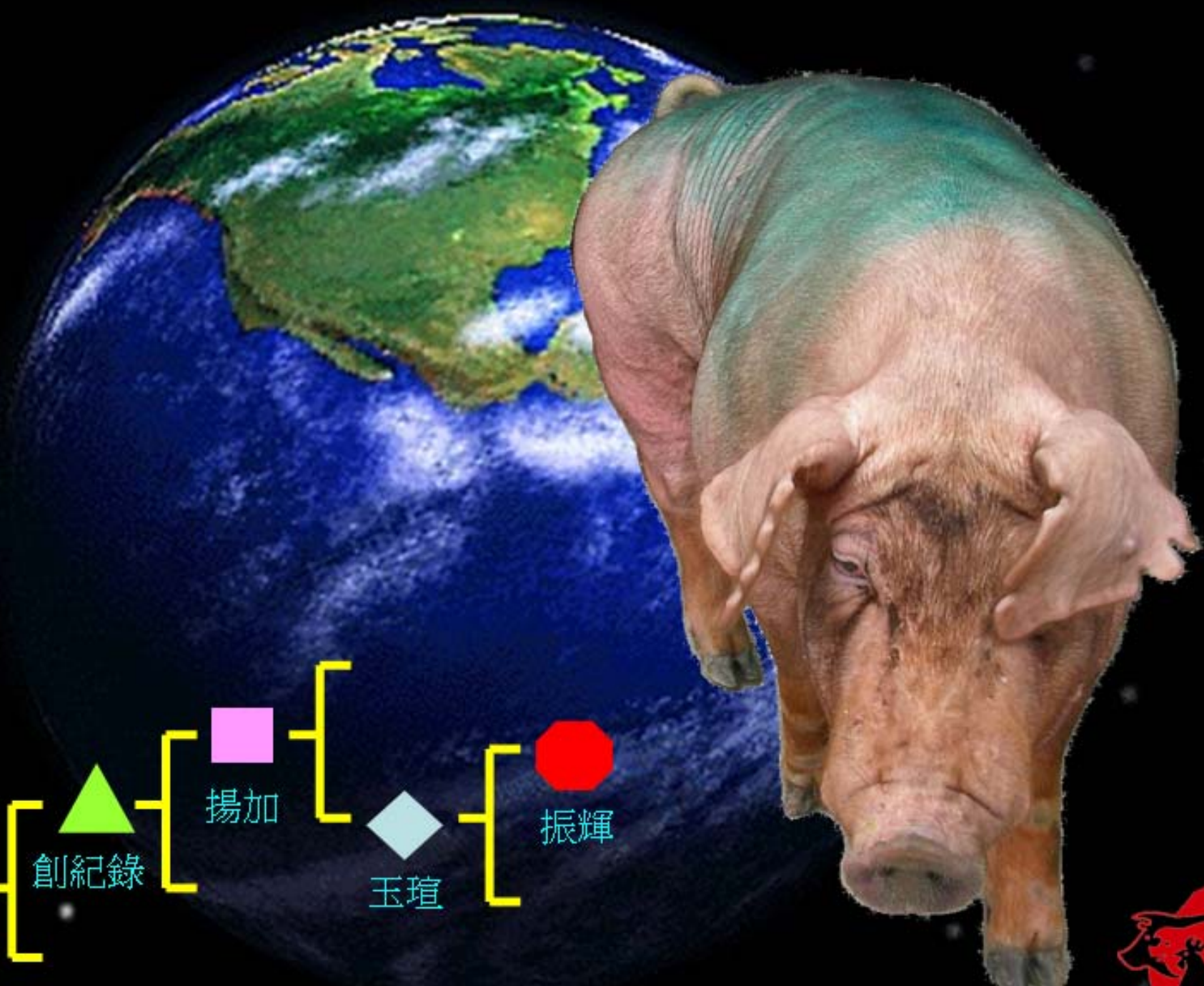
財團法人中央畜產會種  
豬登錄執行要點  
修訂於2005年3月28日農牧字第  
0940121607號核備





# 歷年純種豬登錄頭數及累計頭數







SGS

Certificate TW03/01678QA

The management system of

## National Animal Industry Foundation

No. 112-1, Farm Road, Hsin Hua Town, Tainan Hsien, Taiwan, R.O.C.  
4th Floor, No.14, Wenchow St., Taipei City, Taiwan, R.O.C.



has been assessed and certified as meeting the requirements of

### ISO 9001:2000

For the following activities

**Provision of central test of pig breeds and popularize an auction.**  
Further clarifications regarding the scope of this certificate and the applicability of ISO 9001:2000 requirements may be obtained by consulting the organization

This certificate is valid from 14 September 2006 until 13 September 2009  
Issue 2. Certified since September 2003

Authorized by

*P. Earl*



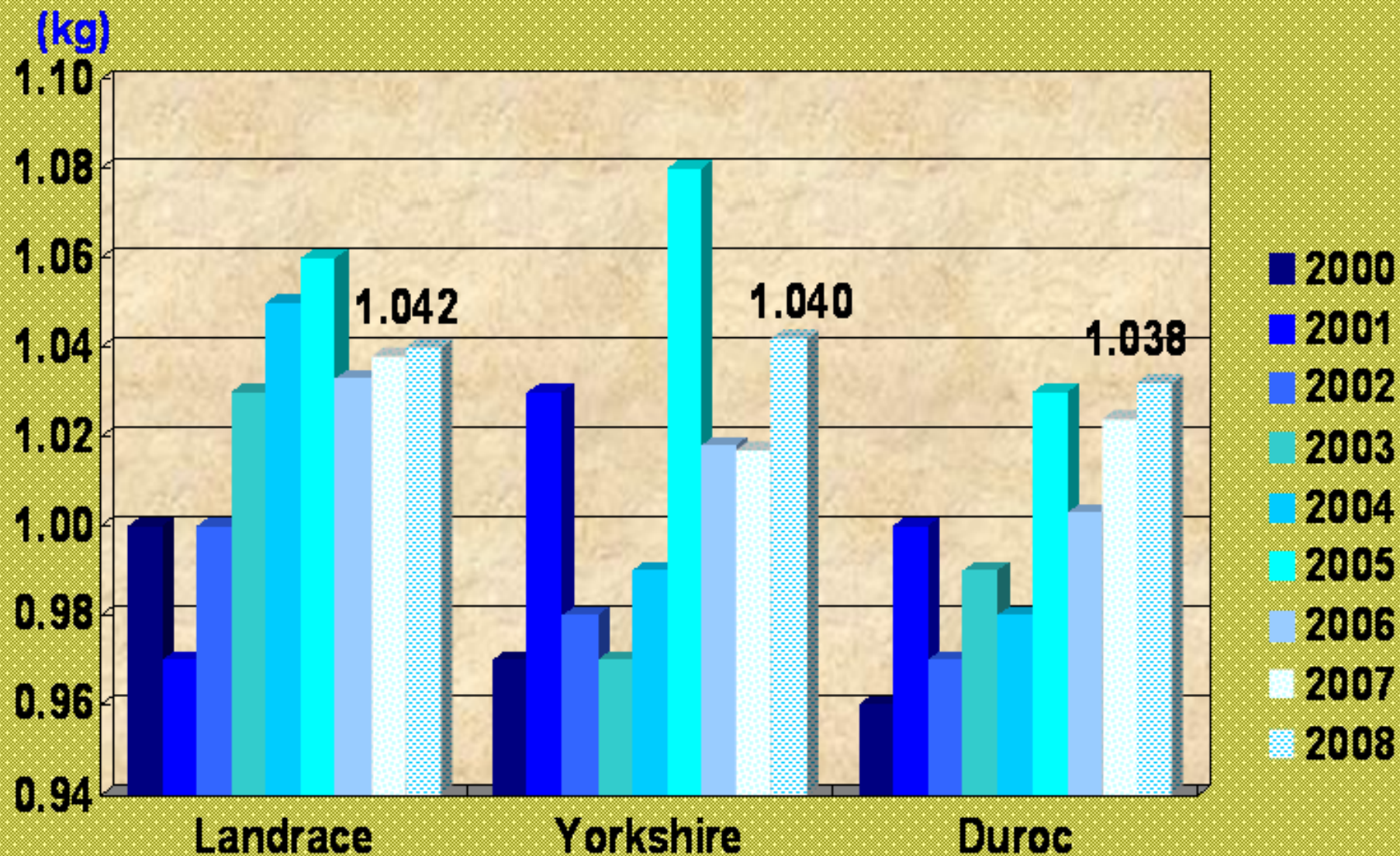
SGS United Kingdom Ltd. Systems & Services Certification  
Rosemead Business Park, Edgware Park, Chesham, Cheshire, CH5 3DN, UK  
T +44 (0)161 200-0000 F +44 (0)161 200-0000 www.sgs.com

Page 1 of 1





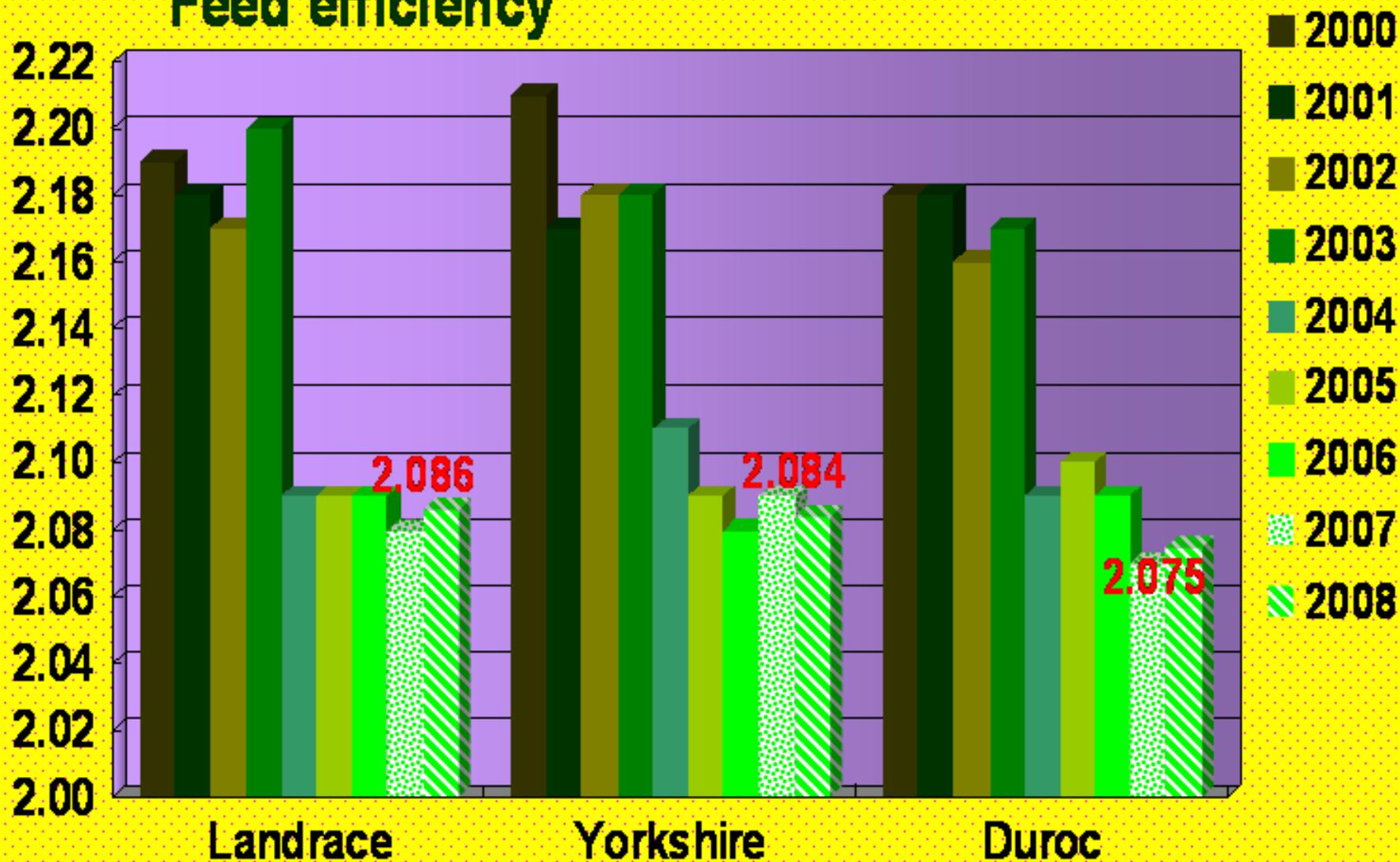
# 檢定站種公豬平均日增重達1.03公斤





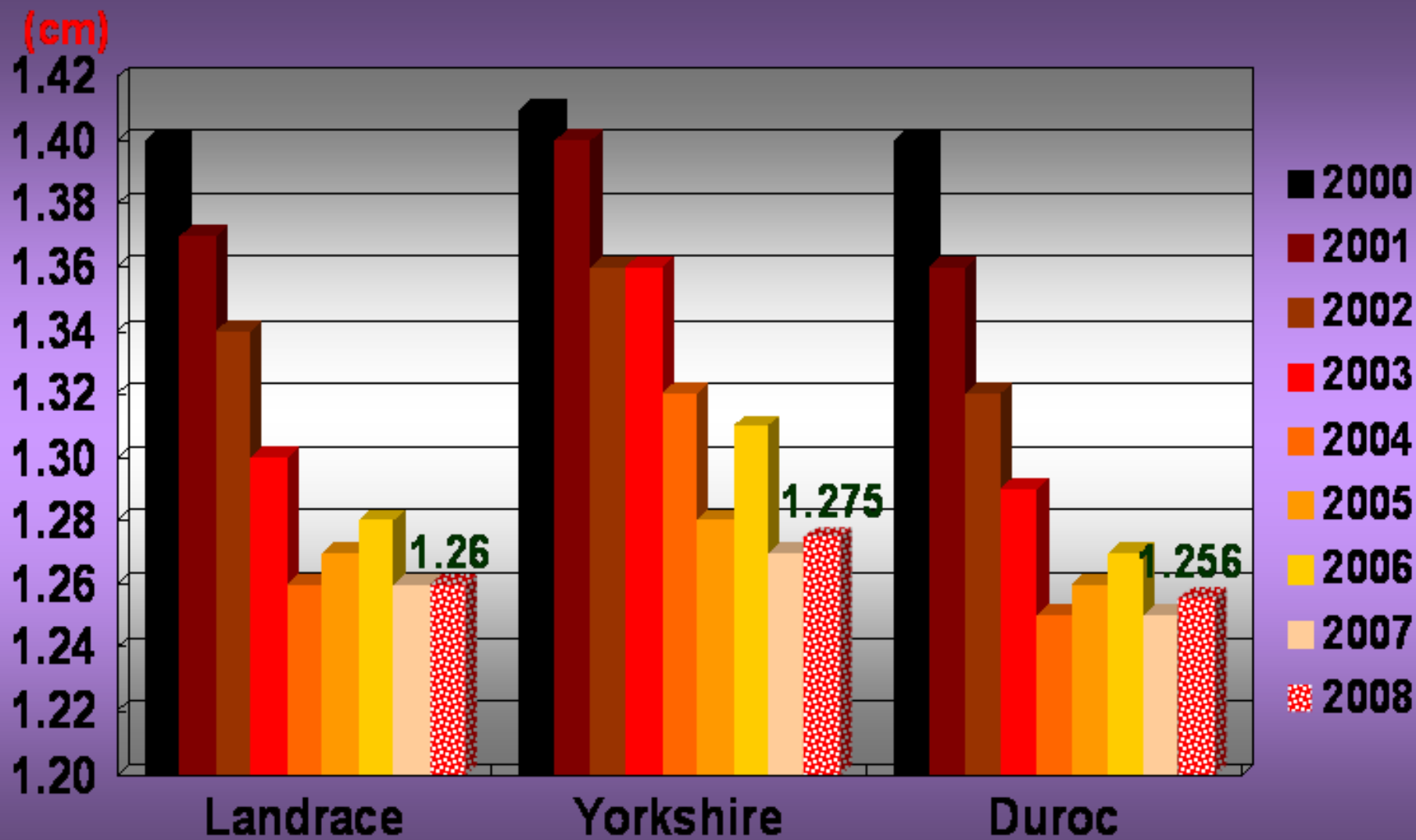
# 檢定站種公豬平均飼料效率2.07

## Feed efficiency





# 檢定站種公豬平均背脂厚度1.26公分





# 種豬聯合育種的成效

## BREEDING EXTRA SWINE IN TAIWAN

中央檢定站種公豬檢定成績 (40公斤-110公斤)

品種	每日增重 (公斤)		飼料效率	
	平均	最佳紀錄	平均	最佳紀錄
杜洛克	1.02	1.38	2.07	1.85
藍瑞斯	1.03	1.47	2.08	1.75
約克夏	1.01	1.36	2.09	1.72



高瘦肉率

高日增重

高經濟價值

高比例篩選種豬群緊迫基因

高肉質基因篩選

高品質豬肉

