

# 菲律賓豬肉消費型態

## Consumption Patterns in Philippines

Dr. Ruth Micalat-Sonaco (ITCPH)

Department of Agriculture  
**ATI-ITCPH** Specialized Center on Pig Production  
 Raise Pigs the ITCPH Way  
<http://ati.da.gov.ph/itcph/about/vision-mission>

Trainings  
 "...guarantees a culture of excellence and paramount devotion to obtain our vision"

Search this site:  Search

Home

### Vision/Mission

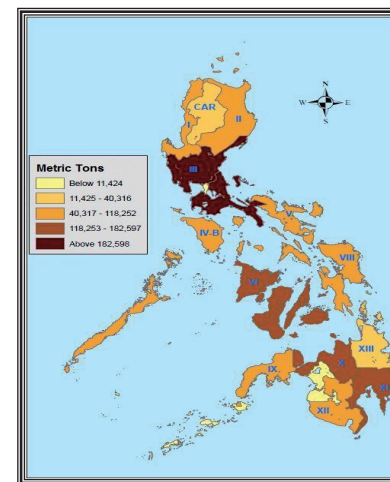
We at ATI-ITCPH work to achieve...

**OUR VISION**  
 "The emergence of dynamic and self-sustaining rural communities of organized pig farmers doing profitable business in a globally competitive environment."

**OUR MISSION**  
 "To be known as a Center of Excellence in practical training and information dissemination on pig technology in Southeast Asia and the Pacific Region."

Inside ATI-ITCPH Online

- IEC Materials
- ITCPH Newsletter
- Downloadable Forms
- Presentations
- Videos
- Annual Reports
- ATI Network
- Training Calendar



Thematic Map of Swine Production, 2014

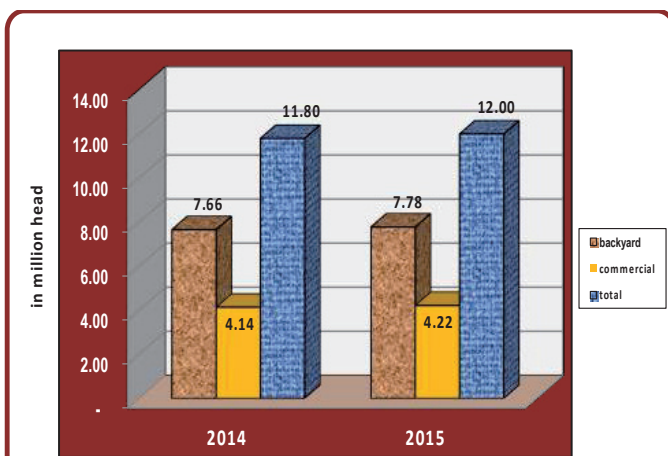


Figure 1. Swine Inventory by Farm Type, Philippines, as of January 1, 2014-2015

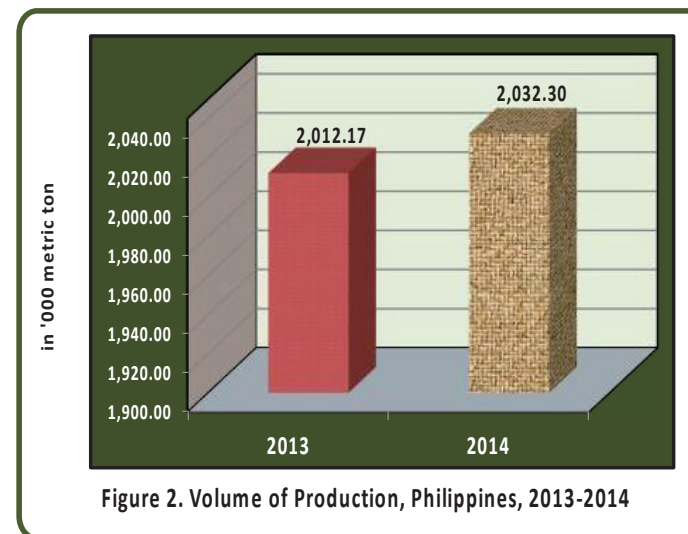


Figure 2. Volume of Production, Philippines, 2013-2014

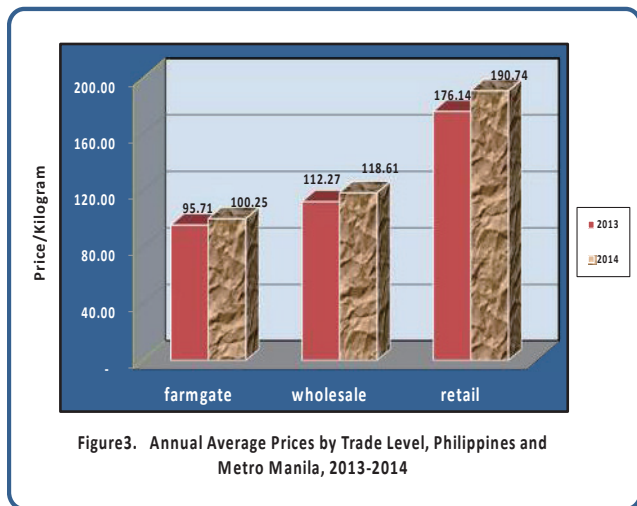


Figure 3. Annual Average Prices by Trade Level, Philippines and Metro Manila, 2013-2014

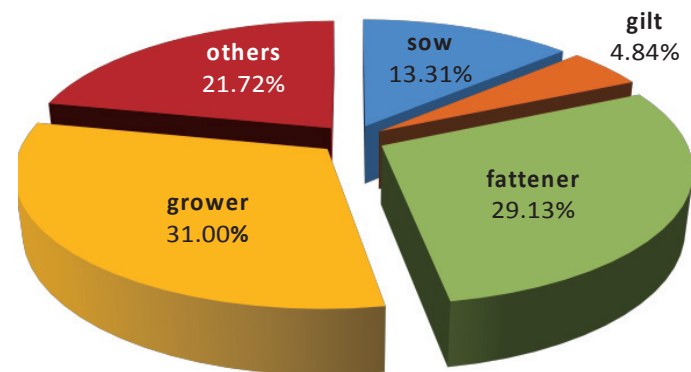


Figure 4. Distribution of Inventory by Age Classification, Philippines, as of January 1, 2015

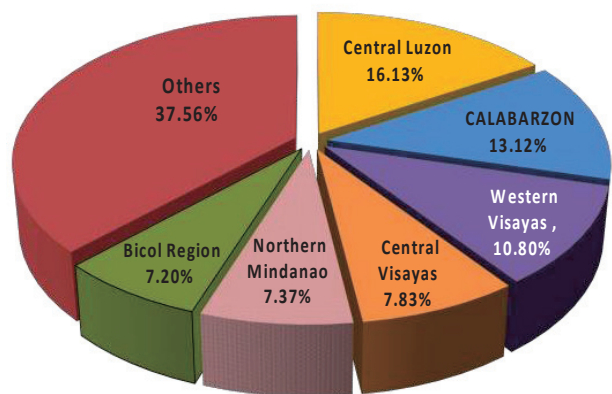


Figure 5. Share in the Inventory of Top Producing Regions, Philippines, as of January 1, 2015

Table 3. Volume of Hog Production by Quarter and Semi-Annual, Philippines, 2012-2014 (in '000 m.t. liveweight)

Quarter	2012	2013	2014	% Change	
				13/12	14/13
Jan - Mar	474.05	475.75	481.71	0.36	1.25
Apr - Jun	460.14	480.50	484.29	4.42	0.79
<i>Jan - Jun</i>	<b>934.19</b>	<b>956.25</b>	<b>966.00</b>	<b>2.36</b>	<b>1.02</b>
Jul - Sep	466.36	474.53	482.00	1.75	1.57
Oct - Dec	573.07	581.39	584.31	1.45	0.50
<i>Jul - Dec</i>	<b>1,039.43</b>	<b>1,055.93</b>	<b>1,066.31</b>	<b>1.59</b>	<b>0.98</b>
<b>TOTAL (Jan - Dec)</b>	<b>1,973.62</b>	<b>2,012.17</b>	<b>2,032.30</b>	<b>1.95</b>	<b>1.00</b>

**Table 4. Volume and Value of Pork Imports by Quarter and Semi-Annual, Philippines, 2012-2014**

ITEM	2012	2013	2014P	Percent Change	
				13/12	14/13
<b>Volume (m.t.)</b>	<b>144,469.10</b>	<b>186,857.22</b>	<b>202,347.41</b>	<b>29.34</b>	<b>8.29</b>
Jan-Mar	35,459.43	43,144.29	37,116.32	21.67	(13.97)
Apr-Jun	27,382.92	55,181.03	51,857.72	101.52	(6.02)
<b>Jan - Jun</b>	<b>62,842.35</b>	<b>98,325.33</b>	<b>88,974.04</b>	<b>56.46</b>	<b>(9.51)</b>
Jul-Sep	37,988.80	48,265.65	51,667.67	27.05	7.05
Oct-Dec	43,637.96	40,266.25	61,705.70	(7.73)	53.24
<b>Jul - Dec</b>	<b>81,626.76</b>	<b>88,531.90</b>	<b>113,373.37</b>	<b>8.46</b>	<b>28.06</b>
<b>Value (CIF '000 US\$)</b>	<b>152,999.50</b>	<b>268,961.47</b>	<b>309,068.08</b>	<b>75.79</b>	<b>14.91</b>
Jan-Mar	26,037.93	56,260.97	53,788.55	116.07	(4.39)
Apr-Jun	28,691.75	83,318.67	78,290.19	190.39	(6.04)
<b>Jan - Jun</b>	<b>54,729.68</b>	<b>139,579.63</b>	<b>132,078.73</b>	<b>155.03</b>	<b>(5.37)</b>
Jul-Sep	45,956.75	70,455.93	78,277.06	53.31	11.10
Oct-Dec	52,313.06	58,925.91	98,712.28	12.64	67.52
<b>Jul - Dec</b>	<b>98,269.81</b>	<b>129,381.84</b>	<b>176,989.34</b>	<b>31.66</b>	<b>36.80</b>

P- Preliminary

Compiled by the Agricultural Marketing Statistics Analysis Division (AMSAD), PSA

Source: Trade Statistics Division, PSA



**Table 5. Swine Supply and Disposition, Philippines, 2012-2014 (Number of live animals)**

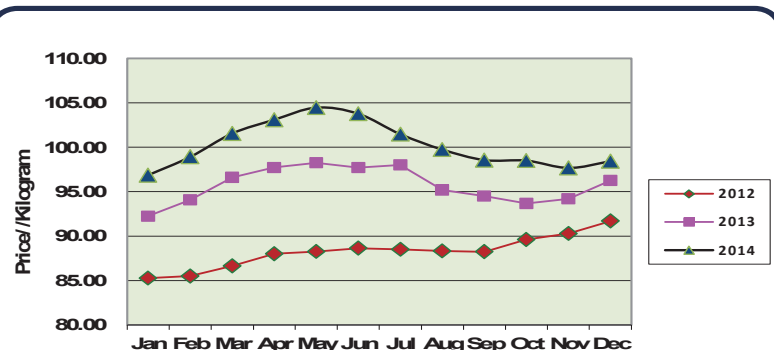
ITEMS	2012	2013	2014*	% Change	
				13/12	14/13
<b>TOTAL SUPPLY</b>	<b>37,812,974</b>	<b>38,140,351</b>	<b>38,416,661</b>	<b>0.87</b>	<b>0.72</b>
Beginning Inventory <sup>1/</sup>	11,863,021	11,843,051	11,801,656	(0.17)	(0.35)
Born live	25,945,343	26,295,355	26,613,886	1.35	1.21
Imports <sup>2/</sup>	4,610	1,945	1,119	(57.81)	(42.47)
<b>DISPOSITION</b>	<b>25,969,923</b>	<b>26,338,695</b>	<b>26,416,939</b>	<b>1.42</b>	<b>0.30</b>
Slaughtered	24,500,187	24,918,892	25,060,660	1.71	0.57
Deaths/Losses <sup>3/</sup>	1,469,736	1,419,803	1,356,279	(3.40)	(4.47)
<b>ENDING INVENTORY</b>	<b>11,843,051</b>	<b>11,801,656</b>	<b>11,999,722</b>	<b>(0.35)</b>	<b>1.68</b>

\* - Preliminary

<sup>1/</sup> As of January 1

<sup>2/</sup> Live breeders recorded by BAI-National Veterinary Quarantine Services

<sup>3/</sup> Mortality due to pests and diseases



**Figure 6. Monthly Average Farmgate Prices, Philippines, 2012-2014**



Republic of the Philippines  
**PHILIPPINE STATISTICS AUTHORITY**  
 1184 Ben-lor Bldg., Quezon Avenue, Quezon City  
**ESSS-LIVESTOCK & POULTRY STATISTICS DIVISION**  
 332-15-43

[info@psa.gov.ph](mailto:info@psa.gov.ph)

<http://www.psa.gov.ph>

