



The **Department of Agriculture's Agri-Pinoy Banner Programs** aim to achieve the following goals...

- ✓ ensure food security
- ✓ alleviate poverty
- ✓ enhance incomes and profitability
- ✓ achieve global competitiveness

The *Agri-Pinoy Livestock Program* is one of the DA's Banner Programs



NATIONAL LIVESTOCK PROGRAM

Agri-Pinoy Livestock Program

Objectives



- ❑ Increase livestock **production** and improve livestock **productivity** to help ensure the availability, accessibility and affordability of livestock products.
- ❑ Increase the **incomes of livestock farmers** by providing access to technology, resources, support services and infrastructure.

Agri-Pinoy Livestock Program

Objectives



- ❑ Ensure the **compatibility of practices** in the livestock and poultry enterprises with environmental standards.
- ❑ Work for the **global competitiveness** of the domestic poultry and livestock enterprises.
- ❑ Provide a **policy environment** conducive to the continuing growth and development of the livestock and poultry industry.



Livestock Program 2016



Eastern Visayas

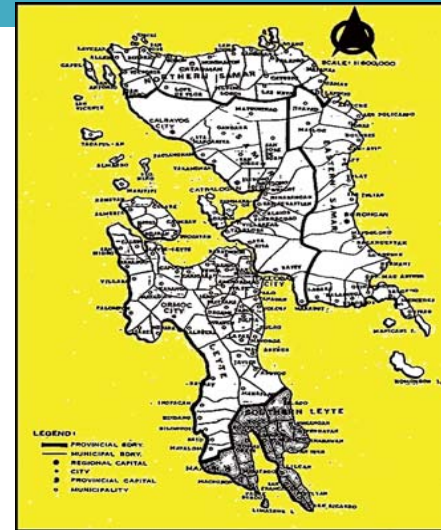
Towards self-sufficiency in meat and eggs



DEPARTMENT OF AGRICULTURE
Regional Field Office 8
Kanhuraw Hill, Tacloban City

Dr. Renato P. Distrajo

Eastern Visayas Region Philippines



6 Provinces

Leyte
So. Leyte
Biliran
Samar
Northern Samar
Eastern Samar

7 Cities

136 Municipalities

~20~



DIRECTION (2012-2016)

- Increase **livestock inventory** by at least 5% within 5 years with at least 1-2% increment per year until 2016.

Commodity	*Baseline 2011 (head)	Targets (Head)				
		2012	2013	2014	2015	2016
Carabao	309,048	315,229	321,533	327,964	334,523	341,082
Cattle	14,671	14,964	15,263	15,568	15,880	16,191
Goat	97,946	99,904	101,903	103,901	105,979	108,057
Hogs	763,052	778,313	793,879	809,756	825,952	842,147

*BAS Data



DIRECTION (2012-2016)

- Increase **meat production** by at least 3% per year within 5 yrs.

Commodity	*Baseline 2011 (Mt)	Targets				
		2012	2013	2014	2015	2016
Carabeef	10,838	11,054	11,275	11,501	11,731	11,966
Beef	2,394	2,441	2,490	2,540	2,591	2,643
Chevon	1,448	1,476	1,506	1,536	1,567	1,598
Pork	10,123	10,325	10,531	10,742	10,957	11,176

*BAS Data



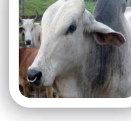
LIVESTOCK ROAD MAP



- Disease Control and Eradication
- Genetic Resources Improvement
- Meat Safety and Quality
- Capability Development
- Research and Development
- Stronger Public and Private Partnerships



THE SERVICES



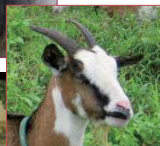
- ❑ Production Support Services
- ❑ Marketing Development Services
- ❑ Extension Support, Education and Training Services
- ❑ Research and Development
- ❑ Regulatory Services
- ❑ Information Support Services
- ❑ Policy Formulation, Planning and Advocacy Services

~21~



HERD IMPROVEMENT PROGRAM

The program aims to improve the *productive and reproductive* potentials of the local herd through the introduction of superior quality genetics.



GENETIC IMPROVEMENT

A. Male Breeder Loan Program (MBLP)

The MBLP is one distribution scheme where superior quality bull, carabull, buck and ram are loaned out to farmers for use in their genetic improvement programs.

Requirements:

1. Must have at least 10-15 head breedable females.
2. Must be willing to insure the breeder animal with PCIC.

Steps:

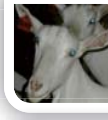
Letter of Intent RED

Site Validation & Recommendations

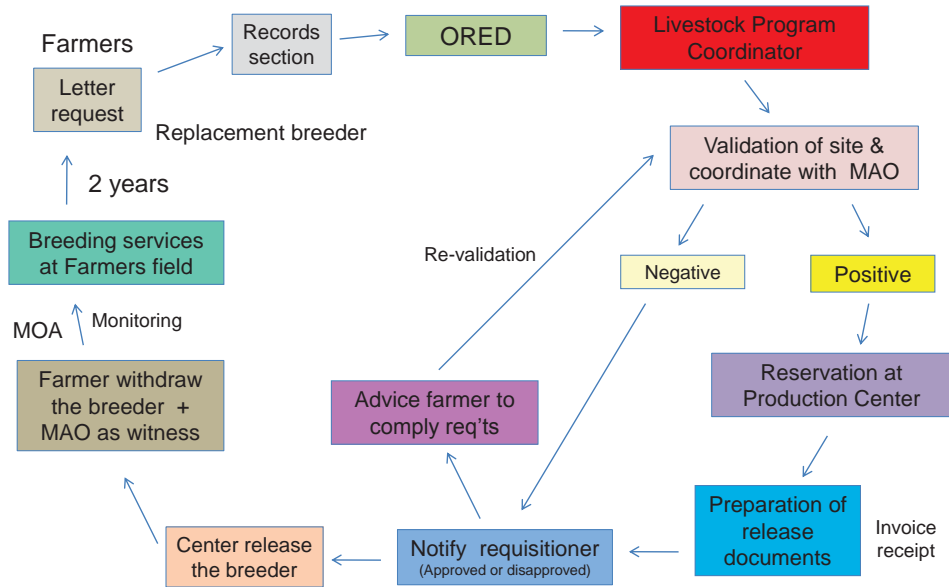
Reservation at station & preparation of release documents

Letter to requisitioner – Approve or Disapproved

Withdrawal of animals by requesting party



Implementation Flow Chart – Male Breeder



YEARLY TARGET OF MALE BREEDERS

Breeder	2012	2013	2014	2015	2016
Carabull	10	12	15	15	15
Bull	15	18	20	20	20
Bucks	40	60	60	60	60
Ram	45	65	65	65	70
Boars	12	15	15	15	15

~22~



GENETIC IMPROVEMENT

b. Unified National Artificial Insemination Program (UNAIP)

Integrating all efforts to upgrade cattle, carabao and small ruminant for chevon, beef and dairy under one program. To enhance cattle, carabao and small ruminants production utilizing/application of the **artificial insemination technology**.

Requirements:

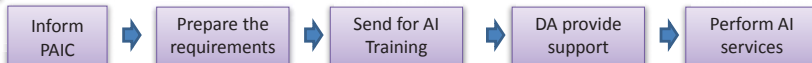
LGU:

1. Must assign a technician or private individual to focus on A.I.
2. Must allocate at least 50k for operating expenses/supplies.
3. Procure 1 unit mother tank (35K) and 1 unit Field tank. (8K).
4. Must have at least 500 breedable females coverage.

DA/PCC:

1. Train technicians or private individual willing to conduct A.I.
2. Provide calf-drop incentive @ 200/viable calf on the ground.
3. Provide Liquid nitrogen supply for 1 year and frozen semen.
4. Provide technical assistance and mentoring to sharpen skills.

Steps:



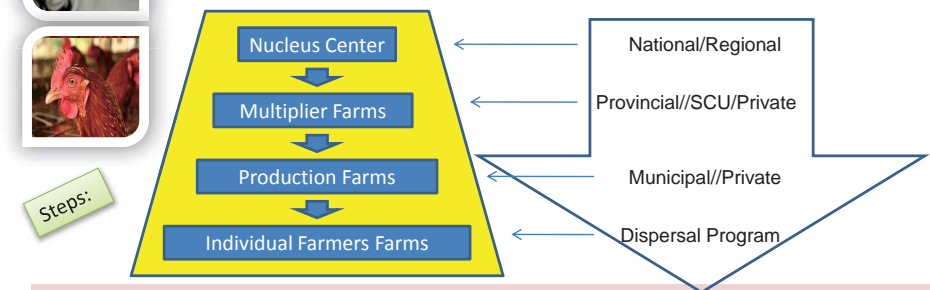
GENETIC IMPROVEMENT

c. Production Farm Development

This is designed to assist interested LGU's, and private individuals in the establishment of a sustainable livestock production farms and centers. as source of superior genetic materials in support of their animal dispersal programs .

Farm Structure

Level



Steps:

Requirements:

LGU: Land area, housing, caretaker, pasture, fencing, water supply.

DA: Initial breeder stocks, training, planting materials, technical assistance, etc.

ANIMAL HEALTH



To ensure the prevention, control and eradication of animal diseases and reduction of mortalities thus increasing the income of farmers.



Assessment of the geographical distribution and monitoring of diseases occurrences in the community using the Philippine Animal Health Information System (PhilAHIS).



ANIMAL HEALTH



a. Prevention, Control and Eradication Program

- Hemorrhagic Septicemia
- Surra/Trypanosomosis
- Newcastle Disease
- Hog Cholera
- Fasciolosis
- Rabies

b. Distribution of vaccines/biologics

c. Provision of drugs and veterinary medicines for emergency response

ANIMAL HEALTH



d. Provision of Disease Diagnostic Laboratory Services

- Pathological testing
- Parasitological testing
- Virulological testing
- Serological testing

e. Provision of Feed Laboratory Analytical Services

- Proximate Feed Analysis

Capability and Capacity Development

- ❖ Conduct of trainings/seminars.
- ❖ University-on-the-Air.
- ❖ Consultation meetings/workshops.
- ❖ Refresher course for Agricultural Extension Technicians.
- ❖ Educational Field Trips (Lakbay Aral)



RESEARCH & DEVELOPMENT



1. New Research

- Application of Breeding Methods for Dairy Goat Herd

2. Continuing Research

- Samar Island Small Ruminants-Rural Enterprise Development Project
- Village-based Artificial Insemination Delivery System
- Increasing Pre-weaning Goat Survival
- Farm-based Management Option and Recording
- Stabilizing Feed Sources for Sustained Nutrition



Let's ensure the availability, accessibility & affordability of livestock & poultry products...



Support the



Livestock Program

THANK YOU VERY MUCH