



# April 2013



## Genetic Evaluation Update

### WWS Delivers: Elite Genetics



新耕有限公司 鄒年烘先生 主講



WORLD WIDE SIRES, LTD.



### 獨占鰲頭～囊括排行榜前10名公牛

#### Top 100 TPI Bulls APRIL 2013

(Semen Status is ACTIVE or LIMITED with a minimum of 80% traditional US reliability OR 85% Genomic reliability for production and type)

Rank	Name	% RHA	NAAB	EFI	PROTEIN		FAT		MILK		Hnds	SCS	PL		TYPE		UDC	FLC	TPI
					PTA	PTA%	PTA	PTA%	PTA	%R			PTA	%R	PTA	%R			
1	DE-SU OBSERVER-ET	TR TV 100-NA	7HO10606	6.6	52	.02	61	.02	1602	96	115	2.76	7.2	81	2.70	91	3.02	0.89	2332G
2	BADGER-BLUFF FANNY FREDIE	TV TL 99-NA	1HO06784	6.6	43	.02	54	.03	1236	99	1051	2.70	6.4	89	1.57	98	1.60	2.87	2292G
3	COYNE-FARMS DORCY-ET	BY TV 100-NA	28HO14142																
4	CO-OP O-STYLE OMAN JUST-ET	TR TV 100-NA	1HO09167	6.7	56	-.03	47	-.11	2155	99	739	2.71	5.4	90	1.48	95	1.21	2.11	2246G
5	CO-OP BOSSIDE MASSEY-ET	TV TL 100-NA	1HO09527	6.2	60	.06	71	.09	1283	99	549	2.50	2.9	88	1.84	96	2.14	1.59	2239G
6	LOTTA-HILL SHUTTLE 41-ET	TR TV 100-NA	1HO09192	6.9	41	-.06	66	-.02	1900	99	536	2.70	4.2	87	2.54	95	2.94	1.87	2237G
7	LONG-LANGS OMAN OMAN 2-ETN	TV TL 100-NA	14HO06429	6.6	73	.13	81	.13	1262	99	1018	2.91	1.7	88	2.17	98	1.64	1.96	2185G
8	DE-SU GULF-ET	TR BY 100-NA	7HO10228	6.5	40	-.02	73	.07	1489	92	68	2.62	3.0	80	2.80	90	3.20	1.70	2178G
9	MORNINGVIEW LEVI	TV TL 100-NA	28HO13664																
10	ENSENADA TABOO PLANET-ET	TR TV 100-NA	7HO06081	6.1	66	.00	70	-.04	2216	99	3780	2.98	6.7	98	1.93	99	1.44	-0.47	2176G



WORLD WIDE SIRES, LTD.

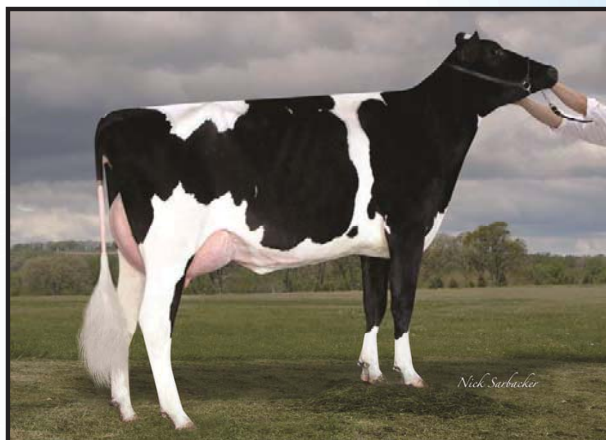
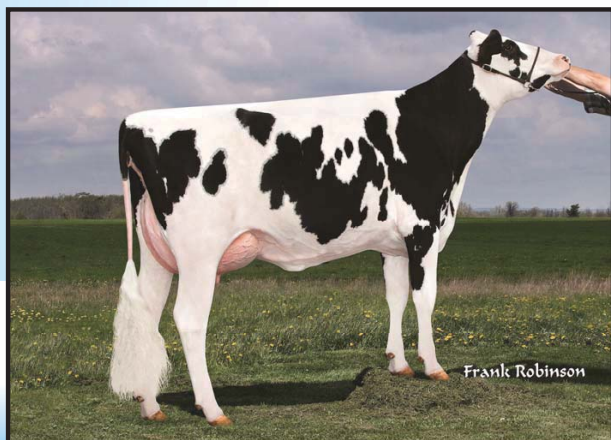
# Breed Leader for TPI



## 7HO10606 OBSERVER

Planet x O-Man x BW Marshall

**+2332 TPI**



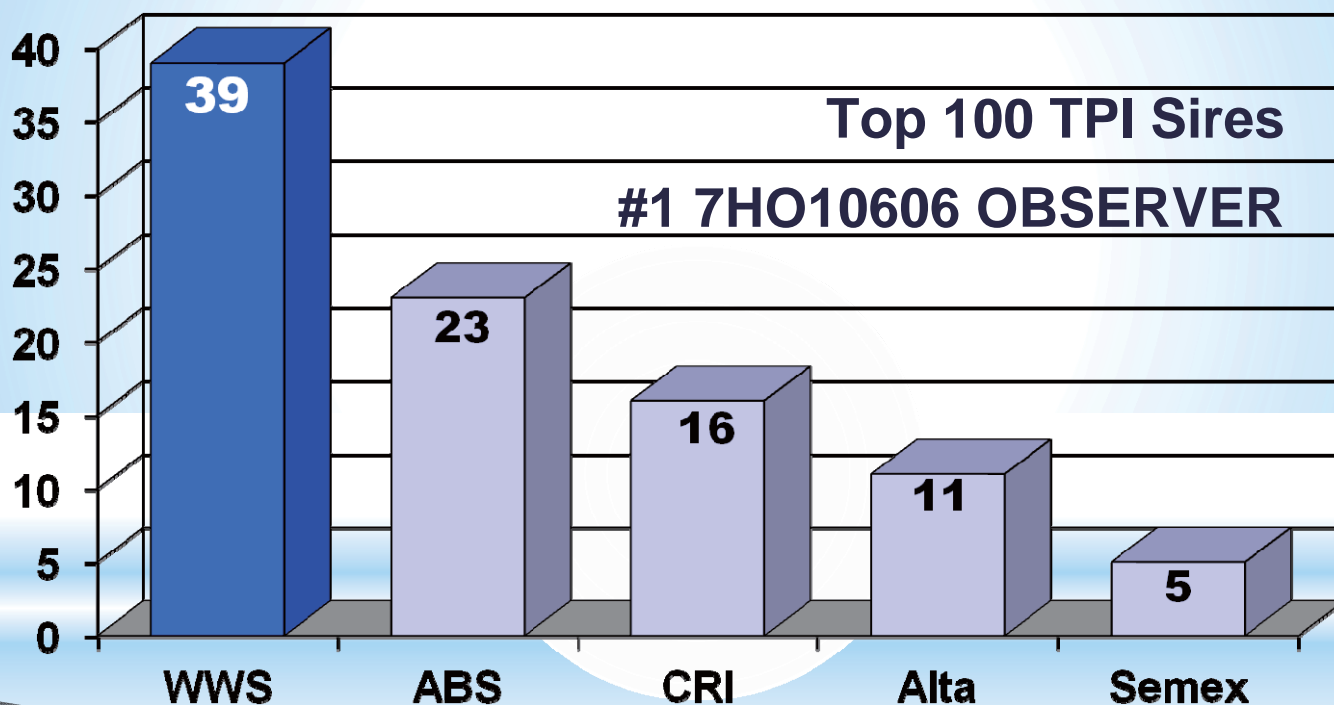
**The Genomic Sensation Lives Up To The Hype!!**

新耕有限公司



WORLD WIDE SIRES, LTD.

## WWS Delivers: **Elite TPI Sires**

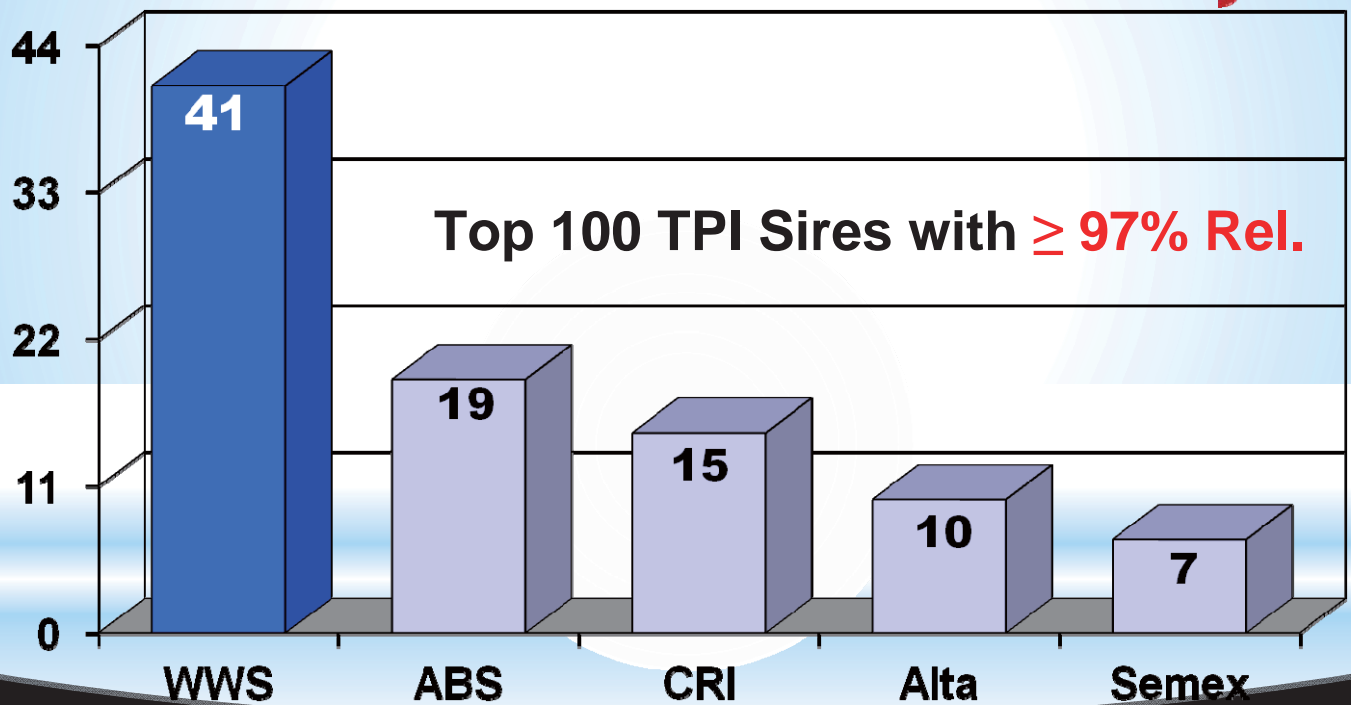


新耕有限公司



WORLD WIDE SIRES, LTD.

# WWS Delivers: Proofs That Breeders Can Rely On

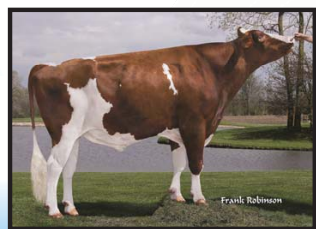


新耕有限公司



## WWS Delivers: Elite TPI **Red** Sires

7HO09555 CLUE  
#1 **Red** TPI Bull  
+1956 TPI



7HO10000 APPLE-RED  
#3 **Red** TPI Bull  
+1917 TPI

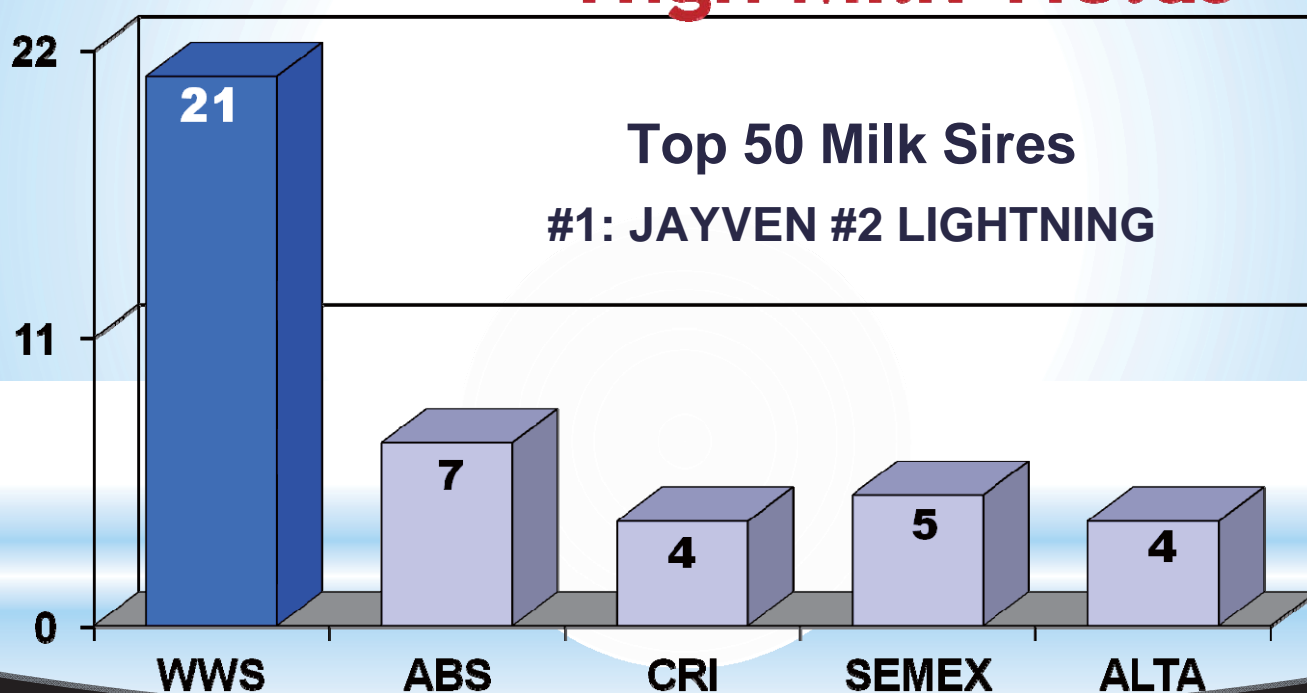
新耕有限公司



# WWS Delivers High Milk Yields

新耕有限公司

## WWS Delivers: High Milk Yields



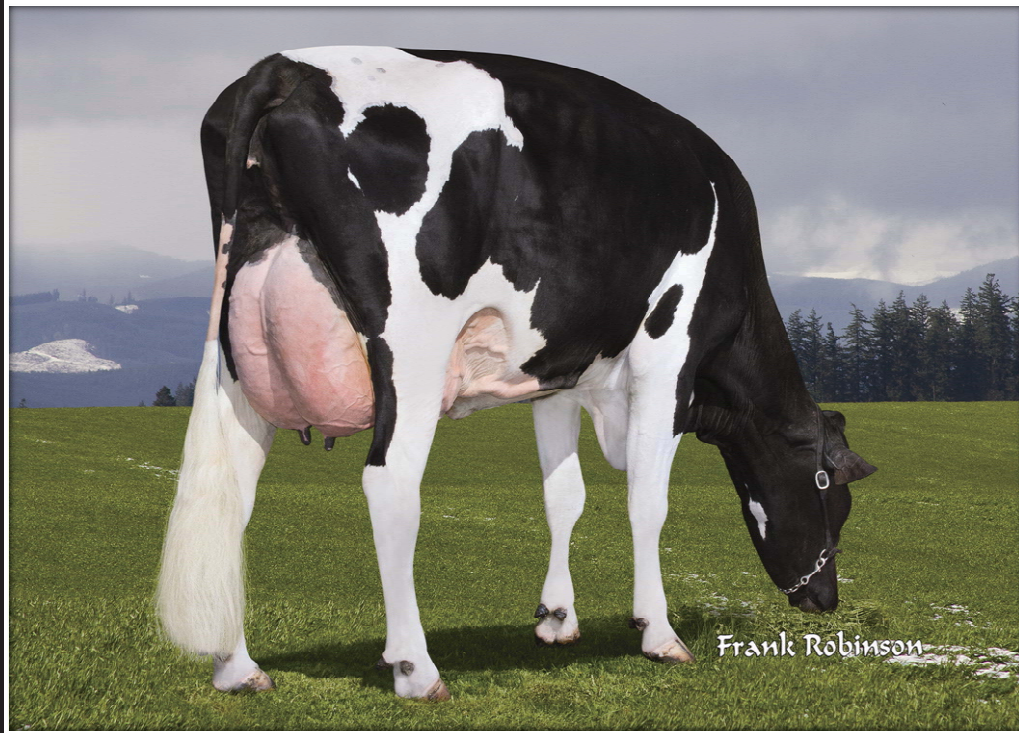
新耕有限公司



WORLD WIDE SIRES, LTD.



# The MARION Legacy Continues



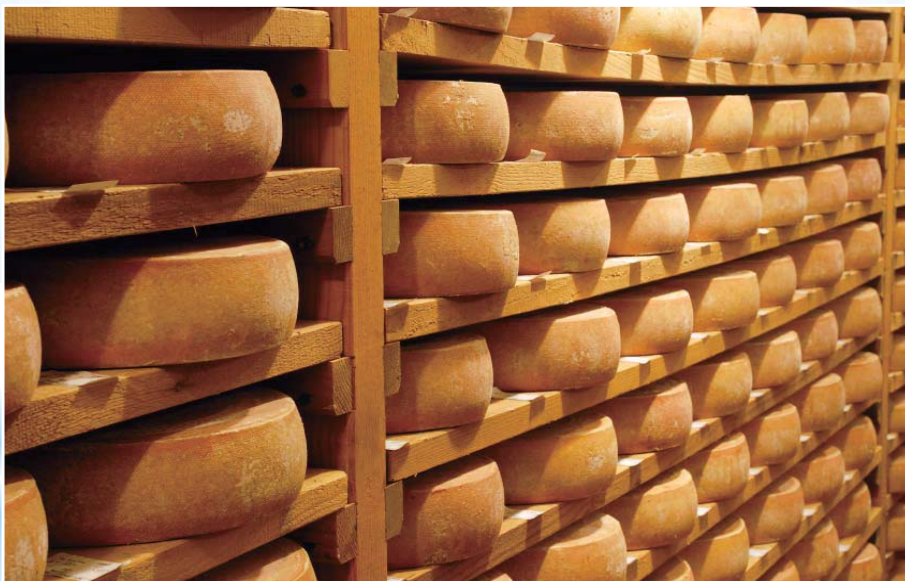
7HO09441 JAYVEN

新耕有限公司

Breed Leader for Milk at +2862



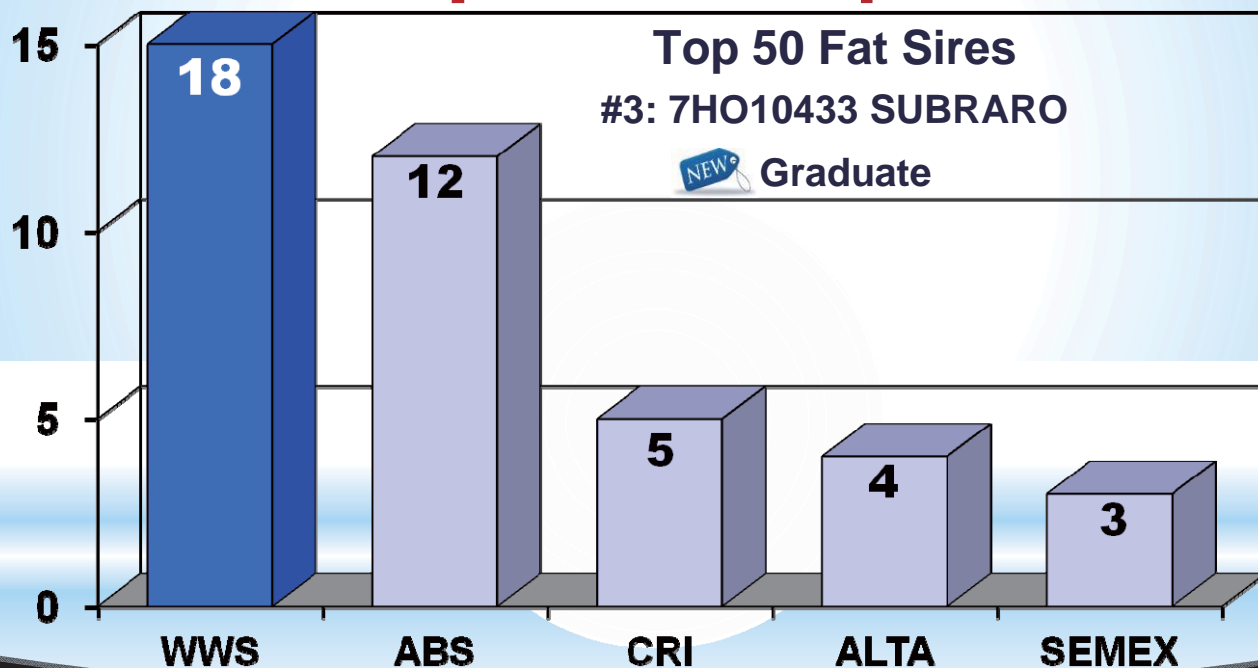
## WWS Delivers: Components Specialists



新耕有限公司

 **WORLD WIDE SIRES, LTD.**

# WWS Delivers: Components Specialists



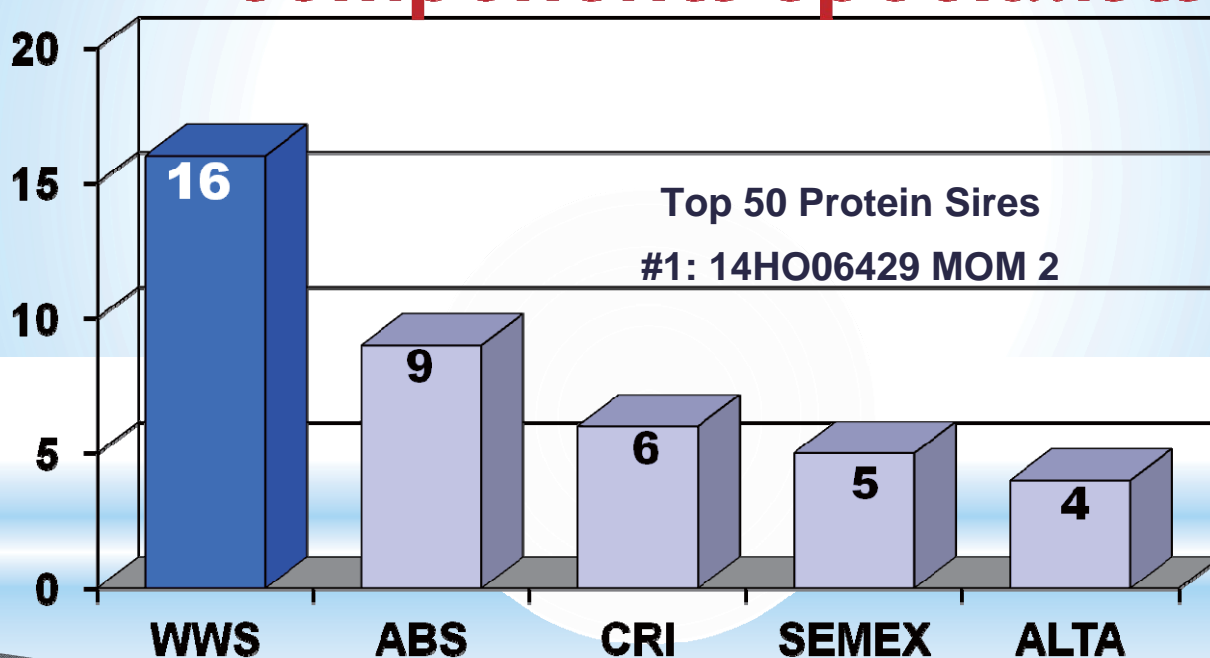
新耕有限公司



WORLD WIDE SIRES, LTD.

Source: IFA USA, April 2012

# WWS Delivers: Components Specialists



新耕有限公司



WORLD WIDE SIRES, LTD.



A person wearing a dark tuxedo jacket, a white shirt, and a dark bow tie. They are holding a small, round, silver pocket watch in their right hand, which is wearing a white glove. The background is dark.

# Sires with *Style* Top Type Bulls

新耕有限公司

## Breed Leader for Type

**7HO10506 GW ATWOOD**  
**+4.57 PTAT**



新耕有限公司

 **WORLD WIDE SIRES, LTD.**

# WWS Delivers: **Elite Type**

4 of the top 5 PTAT sires in the breed are from WWS



**7HO10506 ATWOOD**  
**+4.57 PTAT**



**7HO09165 BRAXTON**  
**+3.69 PTAT**



**7HO10309 DICKEY**  
**+3.67 PTAT**



**7HO09545 HERO**  
**+3.66 PTAT**

新耕有限公司

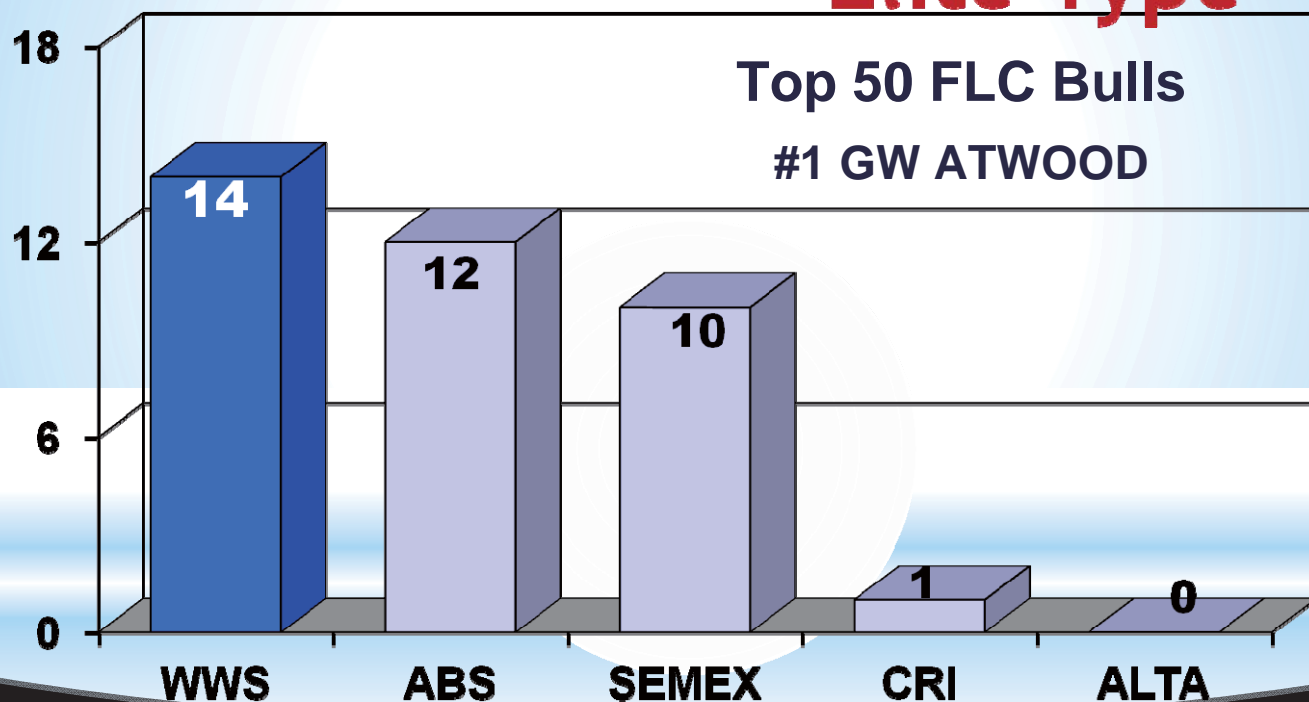


**WORLD WIDE SIRES, LTD.**

Source: HA USA, Dec 2012

# WWS Delivers: **Elite Type**

**Top 50 FLC Bulls**  
**#1 GW ATWOOD**



新耕有限公司

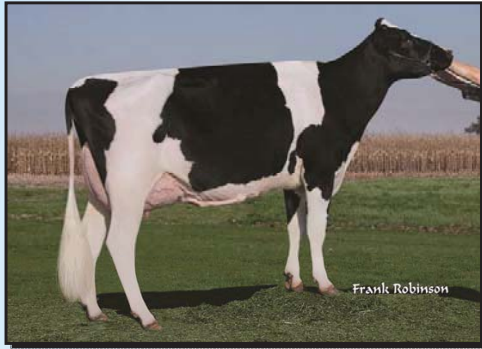


**WORLD WIDE SIRES, LTD.**

Source: HA USA, April 2013



# WWS Delivers: Top UDC Bulls



7HO09545 HERO



14HO05917 JETTASON

1	HERO	3.71
2	JETTASON	3.25
3	GULF	3.20
4	FORK	3.18
5	G W ATWOOD	3.17

新耕有限公司



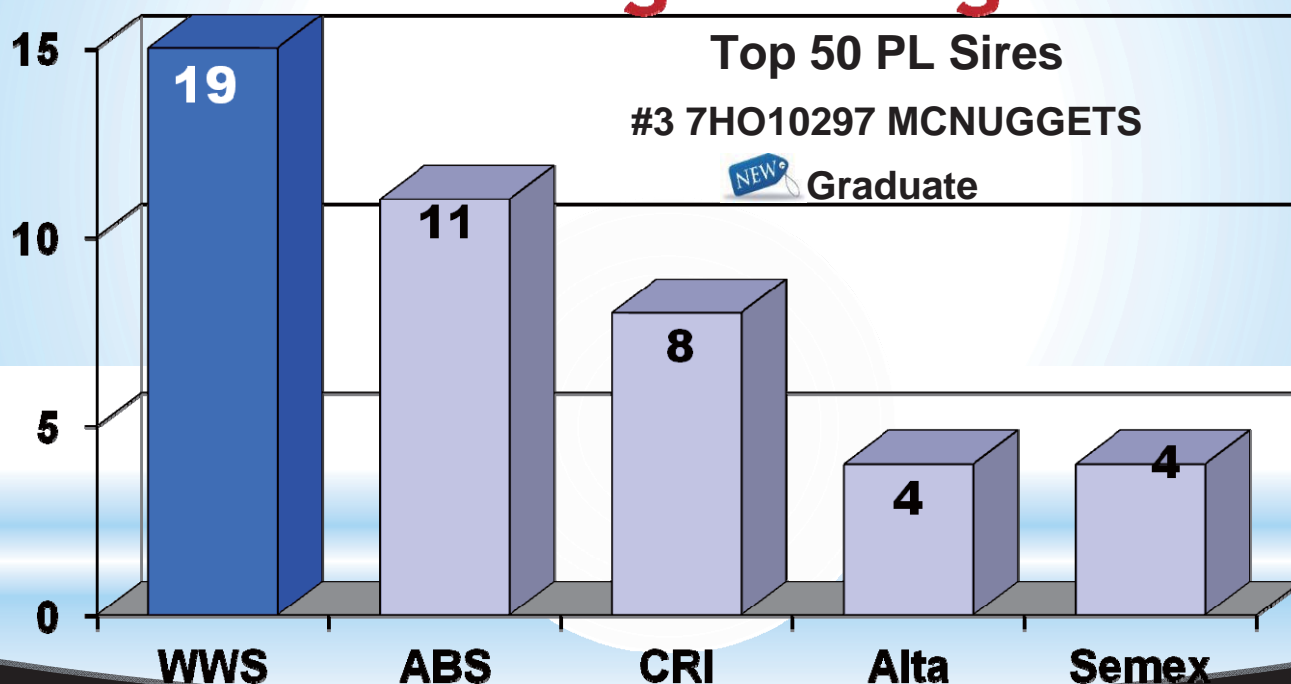
## Research by Holstein Association USA has proven:

- Every 1 STA increase in FLC results in .3 month increase in productive life
- Every 1 STA increase in UDC- results in .6 month increase in productive life
- WWS is a leading supplier for high type bulls, and therefore it comes as little surprise that WWS also leads the way for high productive life sires!

新耕有限公司



# WWS Delivers: Long-Lasting Cows



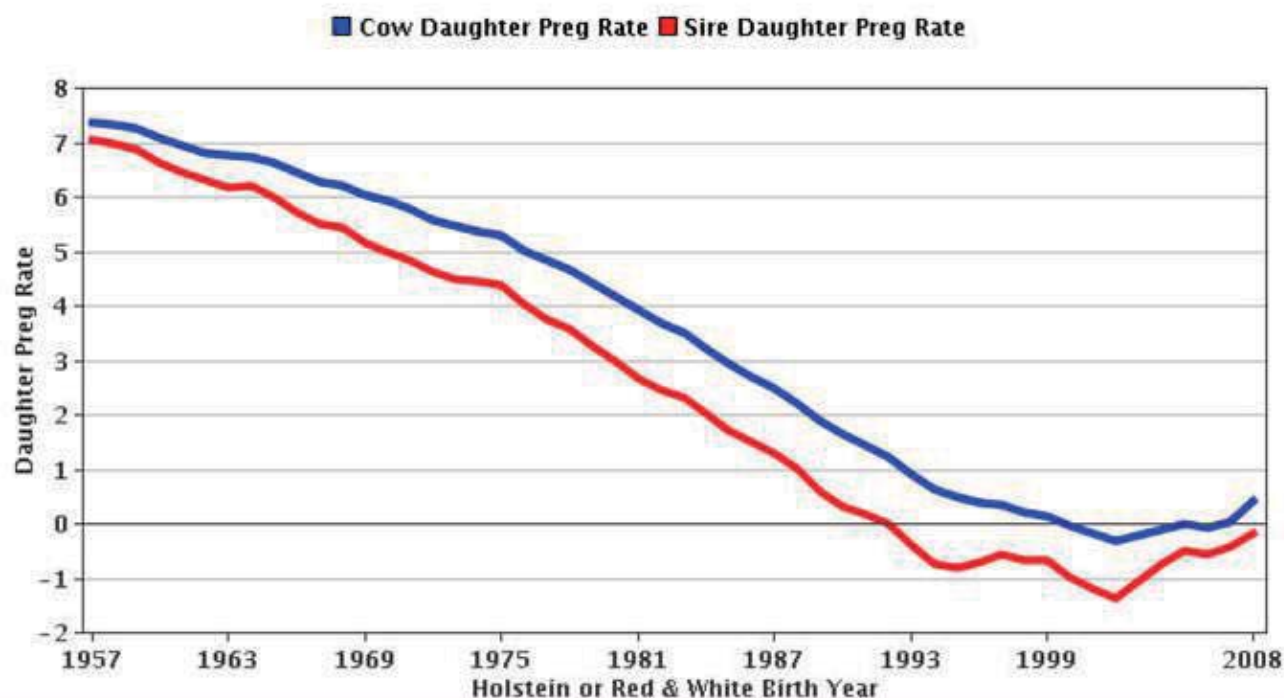
新耕有限公司



WORLD WIDE SIRES, LTD.

Source: IFA USA, April 2012

## Daughter Pregnancy Rate

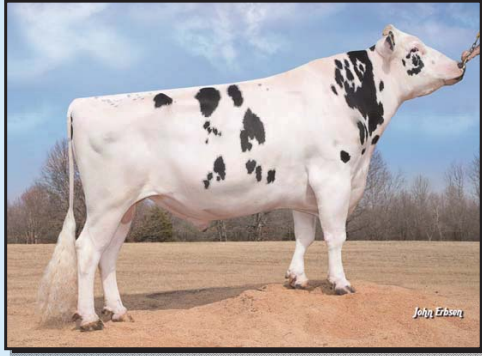


新耕有限公司



WORLD WIDE SIRES, LTD.

# WWS Delivers: **Top DPR Bulls**



7H009069 INGLES



**NEW GRADUATE**  
14H006173 VERNAL



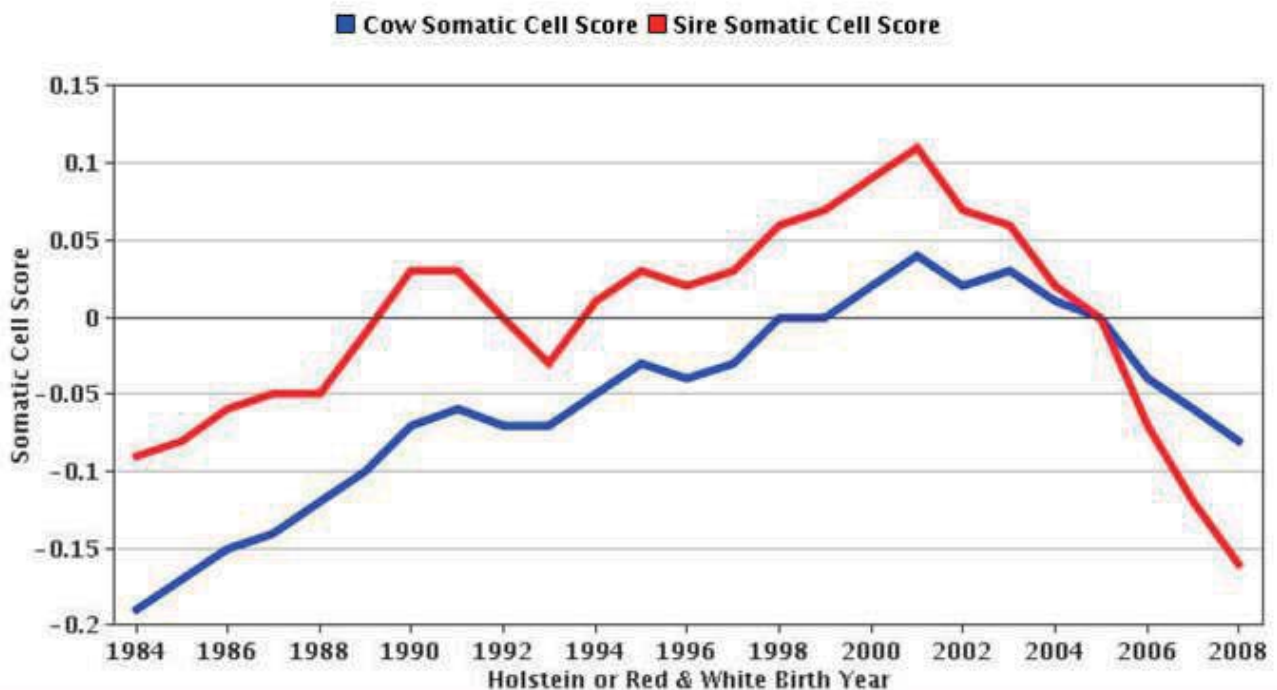
1	INGLES	3.4
2	TEST PILOT	3.0
3	VERNAL	3.0
4	MANPOWER	2.7
5	RUSSELL	2.6



**WORLD WIDE SIRES, LTD.**

新耕有限公司

## Somatic Cell Score



新耕有限公司



**WORLD WIDE SIRES, LTD.**



# WWS Delivers: **Udder Health**



7HO10148 FLAX



14HO04967 DOMINIC

1	FLAX	2.39
2	DOMINIC	2.46
3	MERLIN	2.50
4	LEGACY	2.52
5	KIEFFER	2.53
6	TORO	2.53
7	MCNUGGETS	2.53
8	SNAPPER	2.54
9	TIME	2.54
10	HAVEN	2.56



新耕有限公司



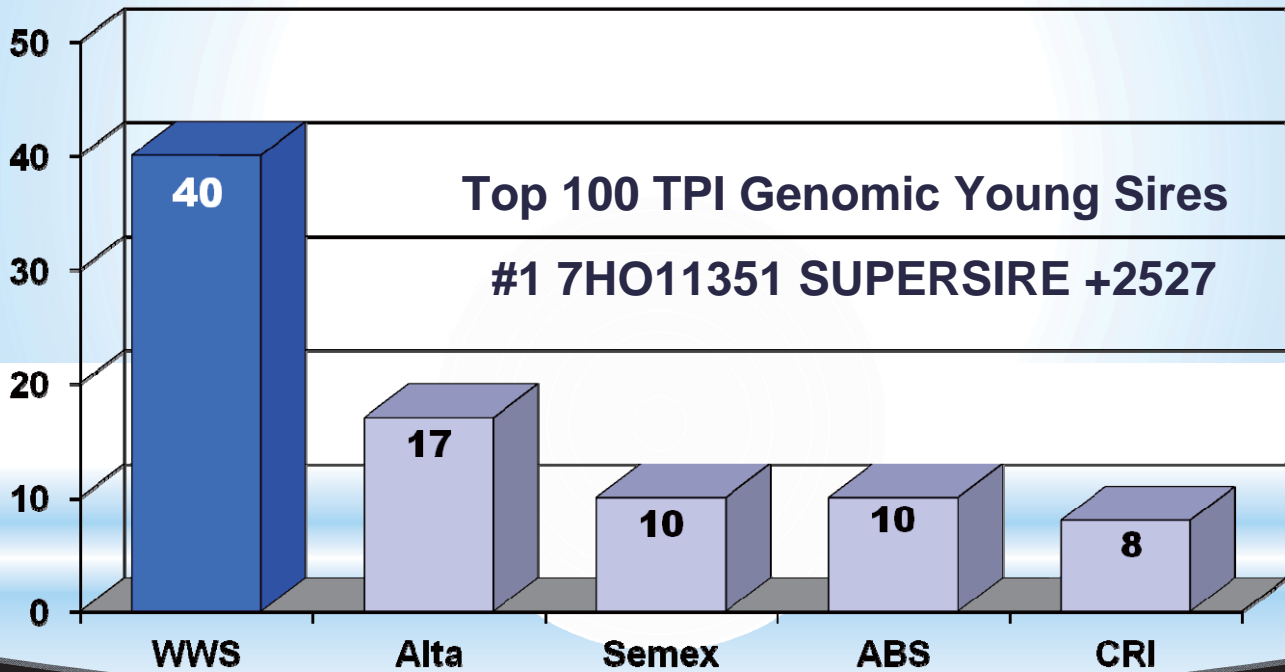
## Looking for the Next Elite Sire?



新耕有限公司



# Look No Further...WWS Delivers: **THE Elite Bulls for the Future**



新耕有限公司



Source: HA USA, April 2013

**Home to the highest PTAT bulls in the breed**  
**WWS is actively marketing 8 Gforce bulls above +3.77 PTAT**

7HO11118	BROKAW	4.62
14HO06809	AIRLIFT	4.52
7HO010999	BRADNICK	4.16
7HO11596	DEFIANT	4.08
7HO10920	GOLD CHIP	3.87
7HO11477	MCCUTCHEN	3.82
7HO11835	CHUCKIE	3.79
7HO11528	BEN	3.78

Source: HA USA, April 2013

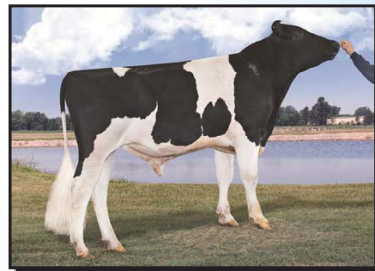




# WWS Delivers: The Elite Bulls for the Future

The April 2013 GForce line-up features:

- ❖ 54 bulls over +2300 TPI
  - SUPERSIRE: +2527 TPI
- ❖ 42 bulls above +3.00 Type
  - BROKAW: +4.62
- ❖ 26 bulls at or above +6.0 PL
  - DUGOUT: +8.3



7H011351 SUPERSIRE



7H011118 BROKAW



新耕有限公司



WORLD WIDE SIRES, LTD.

## WWS Bulls: Not Confined to Time Zones!



NEW YORK



LONDON



SYDNEY



CAPE TOWN



BEIJING

新耕有限公司



WORLD WIDE SIRES, LTD.



# Canadian Leaders



14HO04929 MAN-O-MAN

**#1 LPI Sire**

Climbed 225 points over  
the second ranked sire!

Also ranks

Tied #4 Fat



Oconnors Planet Lucia  
#1 GLPI at +3421

The top 10 GLPI cows are sired by WWS  
bulls (PLANET, MAN-O-MAN, OBSERVER)

新耕有限公司



# Canadian Leaders



7HO010506 GW ATWOOD

**#1 Conformation Sire +19**

**\*\*3 points higher than the #2 bull\*\***

#3-T 7HO09264 DEMPSEY +15

#3-T 7HO10414 DECKER +15

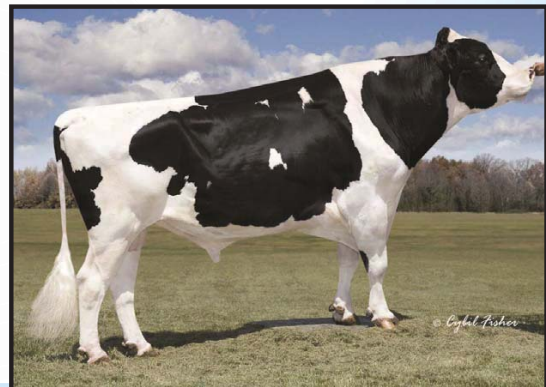


14HO03831 MARION

**#1 Milk Sire - 11<sup>th</sup> consecutive proof**

**#3 7HO05708 BLITZ**

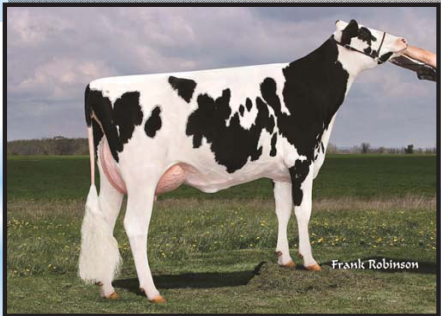
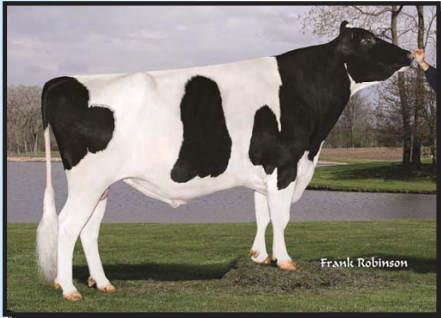
**\*\*WWS has 5 of the top 8 Milk sires\*\***



新耕有限公司



# Global Genetic Giants: High Rankings in Multiple Countries



**Graduate**  
**7HO10606 OBSERVER**

**#1 Germany**



新耕有限公司



**WORLD WIDE SIRES, LTD.**

# Global Genetic Giants: High Rankings in Multiple Countries

**7HO10506 G W ATWOOD**

**United Kingdom**

**#1 Feet & Legs**

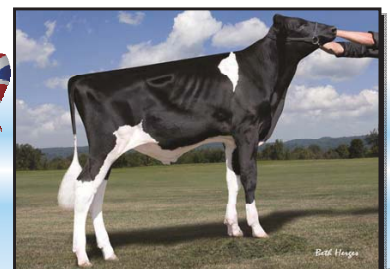
**#5 Type Intl. and Proven**



**7HO11118 BROKAW**

**United Kingdom**

**#1 Genomic Type Bull**



新耕有限公司



**WORLD WIDE SIRES, LTD.**



# 獨占鰲頭～囊括排行榜前10名公牛

## Top 100 TPI Bulls APRIL 2013

(Semen Status is ACTIVE or LIMITED with a minimum of 80% traditional US reliability OR 85% Genomic reliability for production and type)

Rank	Name	% RHA	NAAB	PROTEIN		FAT		MILK		FL		TYPE		UDC	FLC	TPI	
				EF	PTA	PTA%	PTA	PTA%	PTA	%R	Hnds	SCS	PTA				%R
1	DE-SU OBSERVER-ET	TR TV 100-NA	7HO10606	6.6	52	.02	61	.02	1602	96	115	2.76	7.2	81	2.70	91	2332G
2	BADGER-BLUFF FANNY FREDIE	TV TL 99-NA	1HO06784	6.6	43	.02	54	.03	1236	99	1051	2.70	6.4	89	1.57	98	2282G
3	COYNE-FARMS DORCY-ET	BY TV 100-NA	29HO14142														
4	CO-OP O-STYLE OMAN JUST-ET	TR TV 100-NA	1HO09167	6.7	56	-.03	47	-.11	2155	99	739	2.71	5.4	90	1.48	95	2246G
5	CO-OP BOSSIDE MASSEY-ET	TV TL 100-NA	1HO05627	6.2	60	.06	71	.09	1283	99	549	2.50	2.9	88	1.84	96	2239G
6	LOTTA-HILL SHUTTLE 41-ET	TR TV 100-NA	1HO09192	6.9	41	-.06	66	-.02	1900	99	536	2.70	4.2	87	2.54	95	2237G
7	LONG-LANGS OMAN OMAN 2-ETN	TV TL 100-NA	14HO06429	6.6	73	.13	81	.13	1262	99	1018	2.91	1.7	88	2.17	98	2185G
8	DE-SU GULF-ET	TR BY 100-NA	7HO10228	6.5	40	-.02	73	.07	1489	92	68	2.62	3.0	80	2.80	90	2178G
9	MORNINGVIEW LEVI	TV TL 100-NA	29HO13664														
10	ENSENADA TABOO PLANET-ET	TR TV 100-NA	7HO06081	6.1	66	.00	70	+.04	2216	99	3780	2.98	6.7	98	1.93	99	2176G



WORLD WIDE SIRES, LTD.