

Cooperative Resources International

美国国际资源育种公司



獨占鰲頭～囊括排行榜前10名公牛

Top 100 TPI Bulls APRIL 2013

(Semen Status is ACTIVE or LIMITED with a minimum of 80% traditional US reliability OR 85% Genomic reliability for production and type)

Rank	Name	% RHA	NAAB	EFI	PROTEIN		FAT		MILK		Hrds	SCS	PL		TYPE		UDC	FLC	TPI
					PTA	PTA%	PTA	PTA%	PTA	%R			PTA	%R	PTA	%R			
1	DE-SU OBSERVER-ET	TR TV 100-NA	7HO10606	6.6	52	.02	61	.02	1602	96	115	2.76	7.2	81	2.70	91	3.02	0.89	2332G
2	BADGER-BLUFF FANNY FREDDIE	TV TL 99-NA	1HO08784	6.6	43	.02	54	.03	1236	99	1051	2.70	6.4	89	1.57	98	1.60	2.87	2292G
3	COYNE-FARMS DORCY-ET	BY TV 100-NA	29HO14142																
4	CO-OP O-STYLE OMAN JUST-ET	TR TV 100-NA	1HO09167	6.7	56	-.03	47	-.11	2155	99	739	2.71	5.4	90	1.48	95	1.21	2.11	2246G
5	CO-OP BOSSIDE MASSEY-ET	TV TL 100-NA	1HO09527	6.2	60	.08	71	.09	1283	99	549	2.50	2.9	88	1.84	96	2.14	1.59	2239G
6	LOTTA-HILL SHOTTLE 41-ET	TR TV 100-NA	1HO09192	6.9	41	-.06	65	-.02	1900	99	536	2.70	4.2	87	2.54	95	2.94	1.87	2237G
7	LONG-LANGS OMAN OMAN 2-ETN	TV TL 100-NA	14HO06429	6.6	73	.13	81	.13	1262	99	1018	2.91	1.7	88	2.17	98	1.64	1.96	2185G
8	DE-SU GULF-ET	TR BY 100-NA	7HO10228	6.5	40	-.02	73	.07	1489	92	68	2.62	3.0	80	2.80	90	3.20	1.70	2178G
9	MORNINGVIEW LEVI	TV TL 100-NA	29HO13664																
10	ENSENADA TABOO PLANET-ET	TR TV 100-NA	7HO08081	6.1	66	.00	70	-.04	2216	99	3780	2.98	6.7	98	1.93	99	1.44	-0.47	2176G





CRI Headquarters *Shawano, Wisconsin*

The CRI Mission 美国国际的理念

***Provide products and services
as effectively as possible
to maximize the profitability
of members and customers
worldwide while maintaining
a strong cooperative.***

***以合作社的方式为全球农户服务
使客户效益最大化***



Cooperative Resources International

- *A unique structure as an agricultural holding cooperative*
独特的公司组成



Size and Scope

9 Joint Ventures
60+ Countries
3M Units
Development



Finance
Public Relations
Information Technologies



AgSource
Cooperative Services

A Subsidiary of Cooperative Resources International

- ✓ 4,414 Members
- ✓ 694,000 Cows
- ✓ 5.2M Milk Samples
- ✓ 38,800 Feed Samples
- ✓ 774,000 Soil Samples
- ✓ 42,500 Water Tests



Genex
Cooperative, Inc.

A Subsidiary of Cooperative Resources International

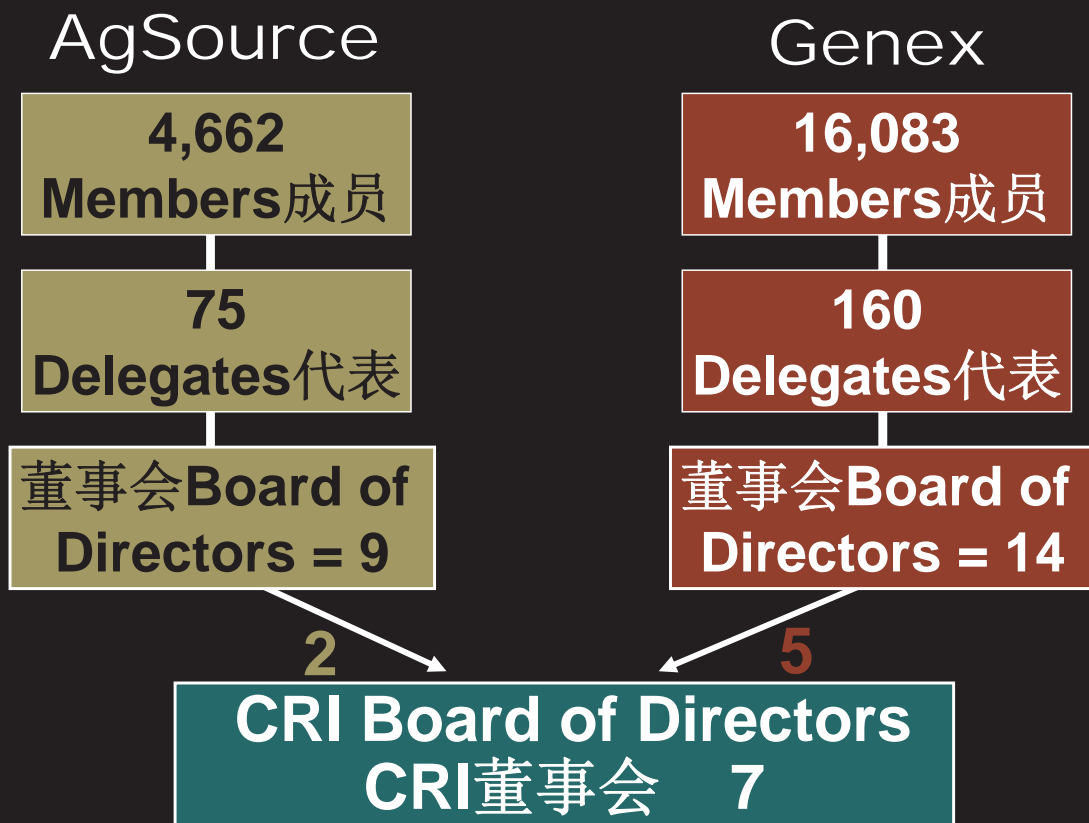
- ✓ 16,000 Members
- ✓ 60,000 Herds
- ✓ 1.9M Matings
- ✓ 4.5M Units

Farm Systems
\$8.6M Sales

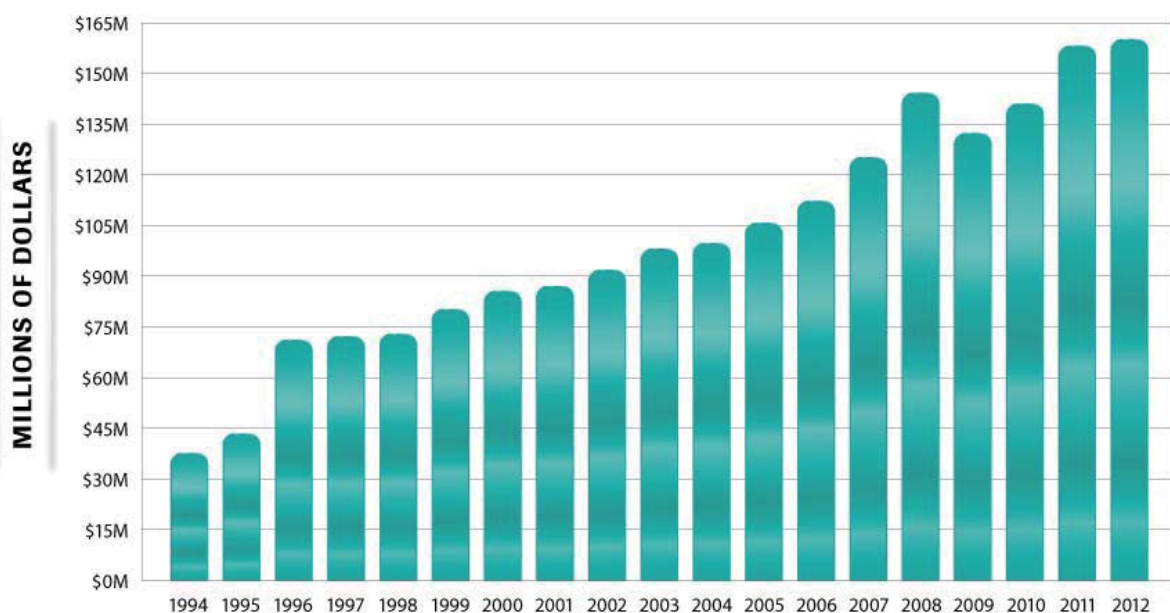
Central Livestock
363,091 Cattle
178,589 Hogs
83,227 Sheep

624,907 Total

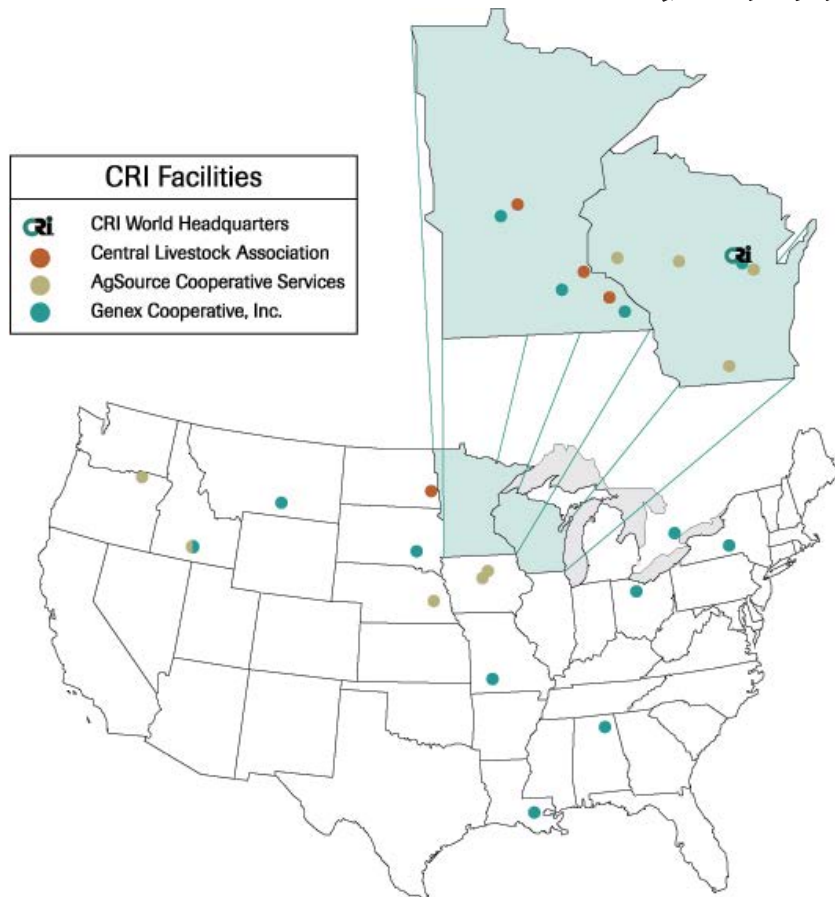
Governance Structure



Annual Revenue 1994 - 2012



CRI Facilities 机构分布



©2009 - 2012/2013

Genex Headquarters *Shawano, Wisconsin*





"Stony Hill"
Bull housing
and home of
GENESIS MOET



Bull housing
Tiffin, Ohio

Bull housing Ithaca, New York



Custom Collection Services

- ▶ **Five locations**
 - Billings, MT
 - Baton Rouge, LA
 - Strafford, MO
 - Fort Payne, AL
 - Mitchell, SD
- ▶ **Largest custom collection service in the country**
- ▶ **1,000 bulls – 1 million units of semen**
- ▶ **Major beef clientele**





Genex Custom Collection

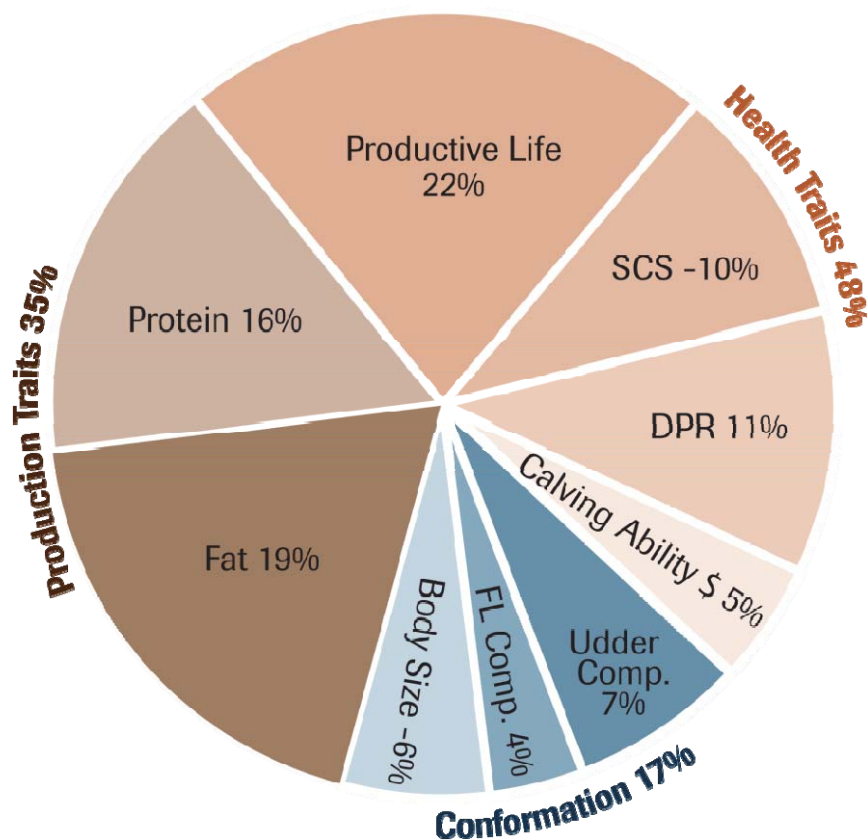


Dairy Genetics



your **Profit** partner™

Traits Included in Lifetime Net Merit



THE POWER OF GENOMICS

Once recognized as high-ranking genomic sires, O-STYLE, MASSEY and FREDDIE now stand as chart-topping daughter-proven sires. See for yourself their elite genetics in the next generation.



DAUGHTERS OF 1H009167 **O-STYLE**
#5 TPI™ • +\$708 Lifetime Net Merit

DAUGHTERS OF 1H009527 **MASSEY**
#3 TPI™ • +\$699 Lifetime Net Merit

DAUGHTERS OF 1H008784 **FREDDIE**
#1 TPI™ • +\$786 Lifetime Net Merit •

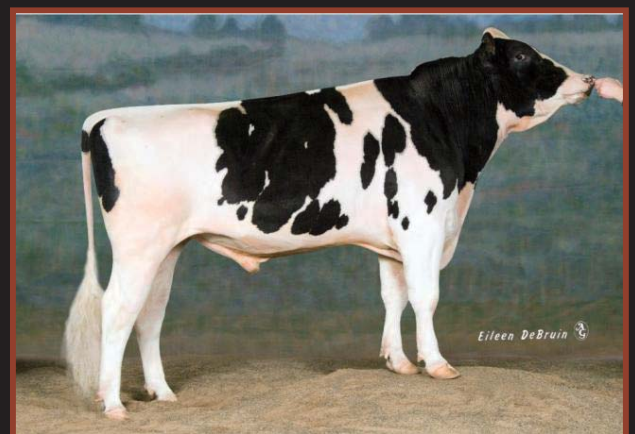
Genesis's
the future of your herd and ours

These daughter groups showcase members of the elite commercial GENESIS herd.

1H009527 MASSEY

Mascol x Bret

- ▶ Wildly popular elite TPI bull with outcross opportunity
- ▶ The perfect long-lasting cow for the freestall environment
- ▶ From the time-tested and well respected Yadda line



Trait	Profile	STA
Stature	Short	Tall 1.1
Strength	Frail	Strong 1.8
Body Depth	Shallow	Deep 1.1
Dairy Form	Tight Rib	Open Rib 0.5
Rump Angle	High Pins	Sloped 2.2
Thurl Width	Narrow	Wide 2.9
Rear Legs-Side Vw.	Posty	Sickle 1.9
Rear Legs-Rear Vw.	Hock-In	Straight 2.7
Foot Angle	Low	Steep 2.1
Feet & Legs Score	Low	High 1.5
Fore Udder Attach.	Loose	Strong 3.0
Rear Udder Height	Low	High 2.8
Rear Udder Width	Narrow	Wide 2.6
Udder Cleft	Weak	Strong 1.5
Udder Depth	Deep	Shallow 2.3
Front Teat Place.	Wide	Close 1.8
Rear Teat Place.	Wide	Close 1.9
Teat Length	Short	Long 0.0

December 2012





Bosside Massey Melissa-ET VG-85



Fustead Massey Style-ET VG-85



1H009192 HILL

Shottle x BW Marshall

- ▶ Tremendous production and outstanding Type
- ▶ Elite daughter-proven TPI
- ▶ Fantastic conception

Trait		Profile		STA	
Stature	Short			Tall	2.4
Strength	Frail			Strong	0.3
Body Depth	Shallow			Deep	0.5
Dairy Form	Tight Rib			Open Rib	1.4
Rump Angle	High Pins			Sloped	2.2
Thurl Width	Narrow			Wide	0.5
Rear Legs-Side Vw.	Posty			Sickle	0.8
Rear Legs-Rear Vw.	Hock-In			Straight	0.9
Foot Angle	Low			Steep	2.7
Feet & Legs Score	Low			High	1.7
Fore Udder Attach.	Loose			Strong	3.0
Rear Udder Height	Low			High	3.9
Rear Udder Width	Narrow			Wide	3.6
Udder Cleft	Weak			Strong	2.1
Udder Depth	Deep			Shallow	3.3
Front Teat Place.	Wide			Close	0.9
Rear Teat Place.	Wide			Close	1.1
Teat Length	Short			Long	0.3

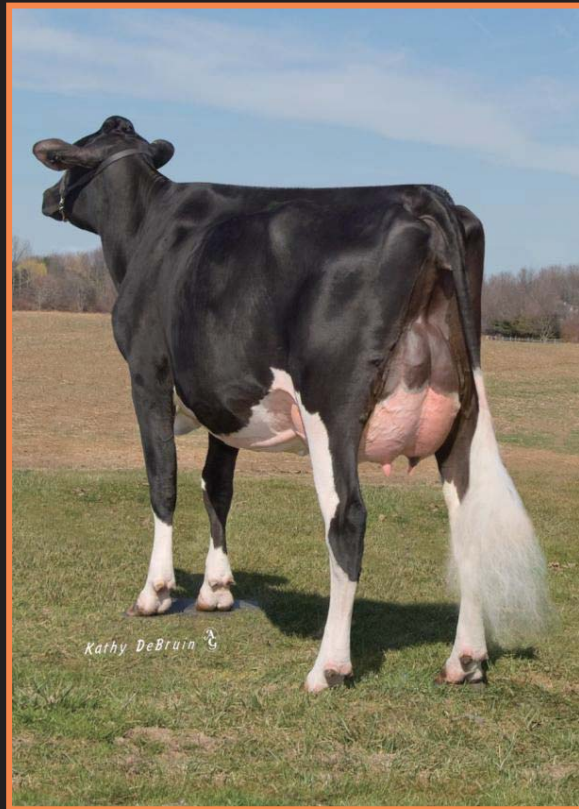


December 2012



Hartford Lotta-Hill 940 VG-87





Troika Hill Roeray



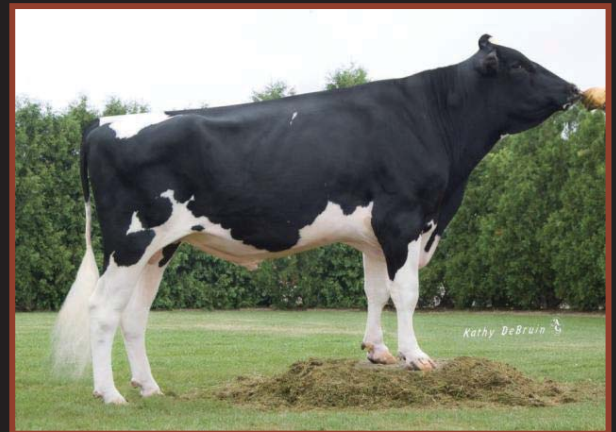
World Record!



1H002509 FLAWLESS

Toystory x Boliver

- ▶ Toystory son who sires outstanding udders
- ▶ High conception rate
- ▶ High Type with a positive DPR



Trait		Profile		STA	
Stature	Short			Tall	1.9
Strength	Frail			Strong	0.5
Body Depth	Shallow			Deep	0.9
Dairy Form	Tight Rib			Open Rib	2.3
Rump Angle	High Pins			Sloped	0.5
Thurl Width	Narrow			Wide	1.6
Rear Legs-Side Vw.	Posty			Sickle	0.8
Rear Legs-Rear Vw.	Hock-In			Straight	1.1
Foot Angle	Low			Steep	1.1
Feet & Legs Score	Low			High	1.1
Fore Udder Attach.	Loose			Strong	3.6
Rear Udder Height	Low			High	3.1
Rear Udder Width	Narrow			Wide	2.8
Udder Cleft	Weak			Strong	2.3
Udder Depth	Deep			Shallow	2.4
Front Teat Place.	Wide			Close	2.6
Rear Teat Place.	Wide			Close	2.5
Teat Length	Short			Long	0.3

December 2012



Muenster Flawless 1102





Stahl Bros Flawless 9138



1H008778 SUPER

Boliver x O Man

- ▶ Elite daughter-proven TPI
- ▶ The complete package
- ▶ High Conception



Trait		Profile		STA	
Stature	Short			Tall	1.5
Strength	Frail			Strong	1.1
Body Depth	Shallow			Deep	0.8
Dairy Form	Tight Rib			Open Rib	0.7
Rump Angle	High Pins			Sloped	1.1
Thurl Width	Narrow			Wide	0.7
Rear Legs-Side Vw.	Posty			Sickle	1.3
Rear Legs-Rear Vw.	Hock-In			Straight	0.9
Foot Angle	Low			Steep	1.8
Feet & Legs Score	Low			High	1.6
Fore Udder Attach.	Loose			Strong	3.0
Rear Udder Height	Low			High	1.9
Rear Udder Width	Narrow			Wide	1.8
Udder Cleft	Weak			Strong	1.7
Udder Depth	Deep			Shallow	2.1
Front Teat Place.	Wide			Close	1.4
Rear Teat Place.	Wide			Close	1.0
Teat Length	Short			Long	0.6





North Harbor Super 2197, second lactation



Oakleigh Super Hetzel VG-85, VG-MS



Genomics has changed our dairy industry and established a new set of rules!

基因组技术已经改变了我们的奶牛产业并建立起一套新的规则！



GENESIS Nucleus Program

- **Longest running nucleus program in North America; in operation for over 20 years**
- **Greater genetic progress with accurately evaluated females and reduced generation interval**



Co-Op Boliver YOYO-ET #1 NM and GTPI Cow



Strategic Plans to Grow GENESIS Nucleus Herds

2013 – 12 herds with over 45,000 females



GENESIS Nucleus Herds

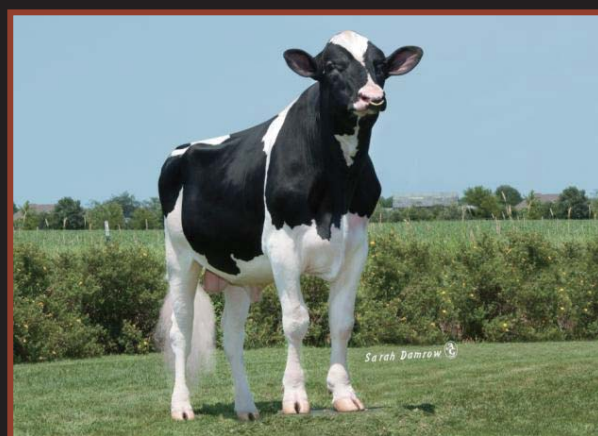
- Partner in genetic decisions
- Exchange of embryos
- Genex & herd owner cooperate in mating decision and flush programs
- Develop and expand female base
- Exclusive rights to all male calves from the herd



1H010490 GALAXY

Freddie x Planet

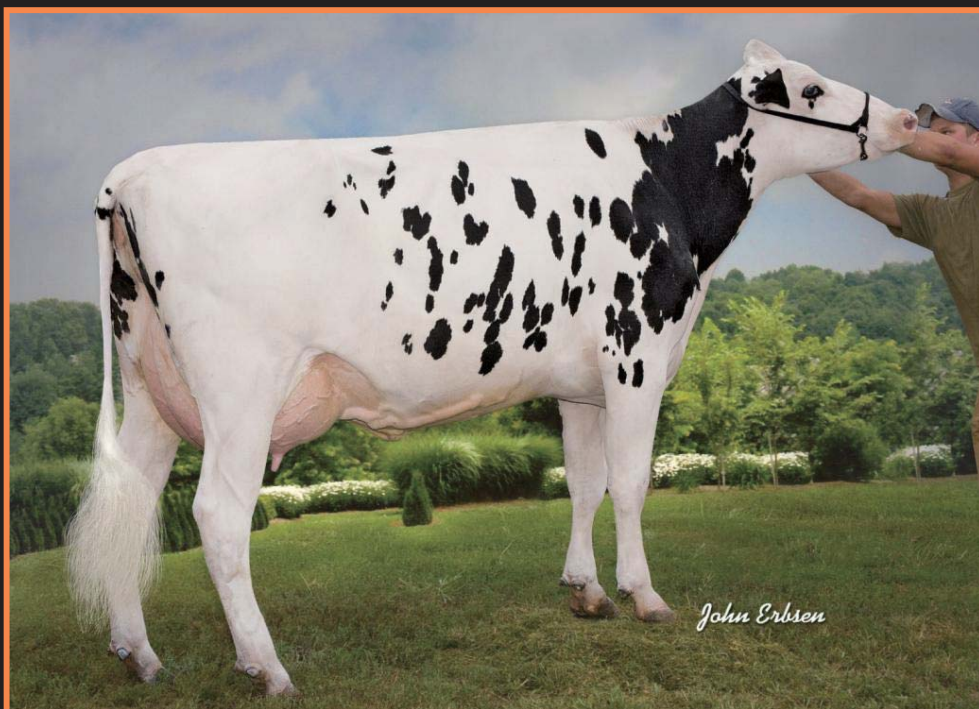
- ▶ Our leader for TPI
- ▶ Over 140 pounds combined Fat and Protein
- ▶ Outstanding Milk yields accompanied by appealing Type



Trait		Profile		STA	
Stature	Short			Tall	2.4
Strength	Frail			Strong	2.0
Body Depth	Shallow			Deep	1.8
Dairy Form	Tight Rib			Open Rib	1.9
Rump Angle	High Pins			Sloped	0.3
Thurl Width	Narrow			Wide	2.3
Rear Legs-Side Vw.	Posty			Sickle	1.0
Rear Legs-Rear Vw.	Hock-In			Straight	1.8
Foot Angle	Low			Steep	2.3
Feet & Legs Score	Low			High	2.2
Fore Udder Attach.	Loose			Strong	3.0
Rear Udder Height	Low			High	3.4
Rear Udder Width	Narrow			Wide	3.1
Udder Cleft	Weak			Strong	2.6
Udder Depth	Deep			Shallow	2.2
Front Teat Place.	Wide			Close	2.6
Rear Teat Place.	Wide			Close	2.9
Teat Length	Short			Long	0.7

December 2012





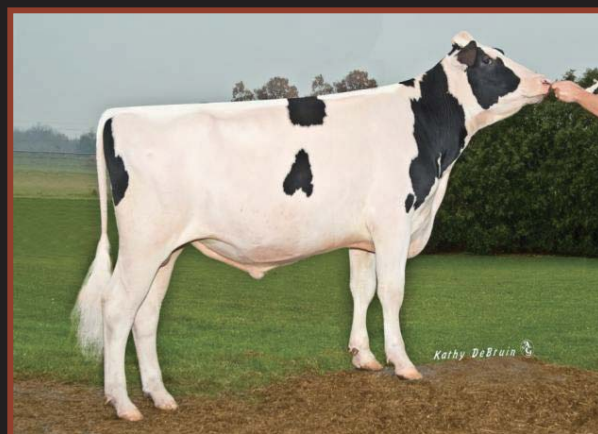
MGD: De-Su 7012-ET VG-87, VG-MS



1H010396 CABRIOLET

Robust x Planet

- Our leader for \$LNM
- Outstanding Milk, Fat, & Protein improver
- Exceptional Calving Ease



Trait	Short	Profile	STA
Stature	Short		Tall
Strength	Frail		Strong
Body Depth	Shallow		Deep
Dairy Form	Tight Rib		Open Rib
Rump Angle	High Pins		Sloped
Thurl Width	Narrow		Wide
Rear Legs-Side Vw.	Posty		Sickle
Rear Legs-Rear Vw.	Hock-In		Straight
Foot Angle	Low		Steep
Feet & Legs Score	Low		High
Fore Udder Attach.	Loose		Strong
Rear Udder Height	Low		High
Rear Udder Width	Narrow		Wide
Udder Cleft	Weak		Strong
Udder Depth	Deep		Shallow
Front Teat Place.	Wide		Close
Rear Teat Place.	Wide		Close
Teat Length	Short		Long





Dam: Co-op Planet Classy-ET VG-85, VG-MS



MGD: Bomaz Ramos 5877 CRI-ET VG-85, VG-MS

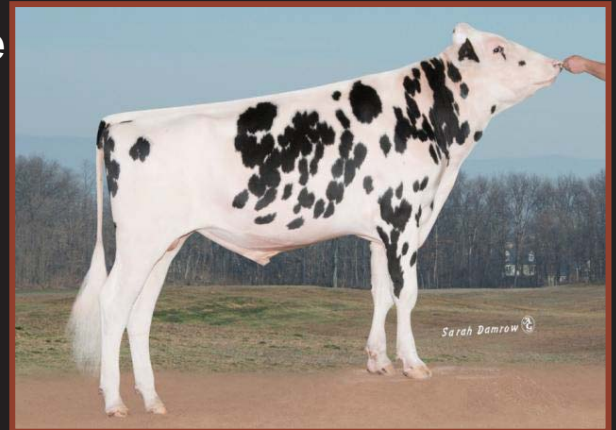


1H010458 DAY

Super x Bolton

- Our leader in Udder Composite
- Popular contract sire
- High-ranking LNM\$

Trait	Profile	STA
Stature	Short	Tall 3.0
Strength	Frail	Strong 1.5
Body Depth	Shallow	Deep 1.8
Dairy Form	Tight Rib	Open Rib 2.4
Rump Angle	High Pins	Sloped 0.6
Thurl Width	Narrow	Wide 1.6
Rear Legs-Side Vw.	Posty	Sickle 0.4
Rear Legs-Rear Vw.	Hock-In	Straight 2.5
Foot Angle	Low	Steep 3.0
Feet & Legs Score	Low	High 3.3
Fore Udder Attach.	Loose	Strong 4.0
Rear Udder Height	Low	High 4.1
Rear Udder Width	Narrow	Wide 3.7
Udder Cleft	Weak	Strong 2.5
Udder Depth	Deep	Shallow 3.3
Front Teat Place.	Wide	Close 1.5
Rear Teat Place.	Wide	Close 1.6
Teat Length	Short	Long 0.4

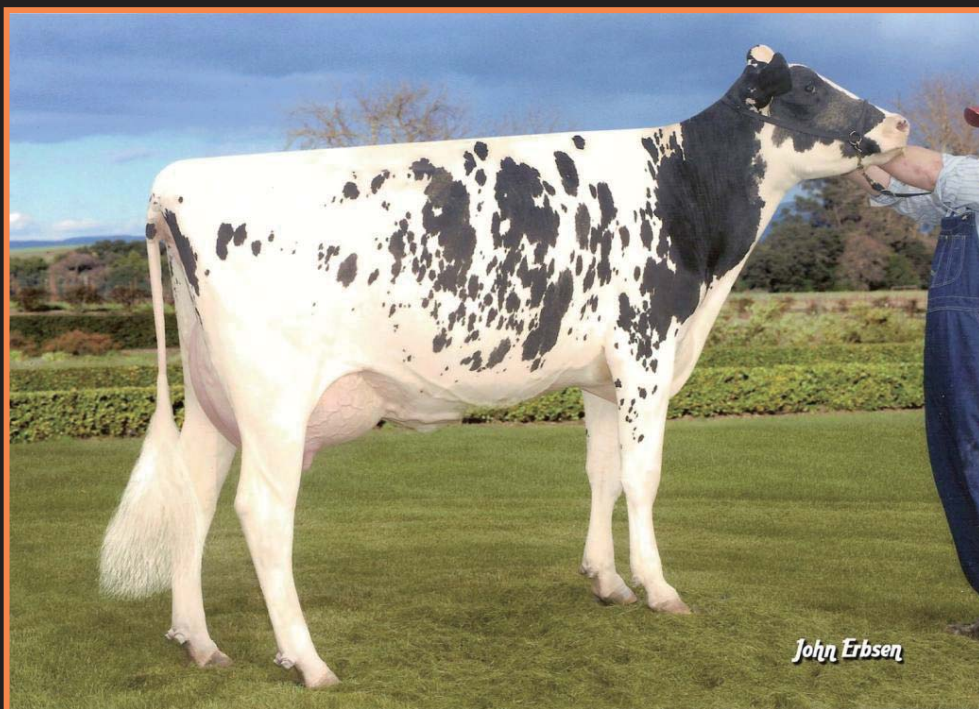


December 2012



Dam: Hendel Bolton Florida-ET VG-85, VG-MS





MGD: Hendel Shottle Miami-ET VG-88, VG-MS



GenChoice sexed semen

性控冻精

... heifer calves create opportunities.

更多母犊，更多机会



New Technologies Provide Opportunities

新技术带来更多的机会

- ▶ Gender-sorted Semen 性别分离精液
 - Calving advantage reducing difficult births
产犊优势降低了难产的发生
 - Maximize profitability and overall animal welfare through voluntary culling.
通过主动淘汰最大化牧场效益和动物福利



New Technologies Provide Opportunities

新技术带来更多的机会

- ▶ Gender-sorted Semen 性别分离精液
 - Meet herd growth goals through internal control. 通过内部控制满足牛群增长目标
 - Invest and raise heifers from only your best cows. 利用你最好的母牛生产犊牛
 - Sell excess heifers for new profit stream.
销售过剩的犊牛以创造更多的利益



What are Your Herd Goals?

你牛群的目标是什么？

- ▶ How many cows do you plan to milk in 3 years?

你计划3年内有多少产奶牛？

- Grow? 增长?
- Maintain? 维持不变?

- ▶ How many heifer calves do you need?

你需要生产多少犊牛？



Impact of Genomics and GenChoice™

基因组技术和性控技术的影响

- ▶ Genetic technologies are about better cows, not necessarily more
基因技术是为生产更好的牛，而不是更多的牛
- ▶ Quality, not always quantity 质量而不是数量



獨占鰲頭～囊括排行榜前10名公牛

Top 100 TPI Bulls APRIL 2013

(Semen Status is ACTIVE or LIMITED with a minimum of 80% traditional US reliability OR 85% Genomic reliability for production and type)

Rank	Name		% RHA	NAAB	EFI	PROTEIN		FAT		MILK		PL		TYPE		UDC	FLC	TPI	
						PTA	PTA%	PTA	PTA%	PTA	%R	Hrds	SCS	PTA %R	PTA %R				
1	DE-SU OBSERVER-ET	TR TV 100-NA	7HO10606	6.6	52	.02	61	.02	1602	96	115	2.76	7.2	81	2.70	91	3.02	0.89	2332G
2	BADGER-BLUFF FANNY FREDDIE	TV TL 99-NA	1HO08784	6.6	43	.02	54	.03	1236	99	1051	2.70	6.4	89	1.57	98	1.60	2.87	2292G
3	COYNE-FARMS DORCY-ET	BY TV 100-NA	29HO14142																
4	CO-OP O-STYLE OMAN JUST-ET	TR TV 100-NA	1HO09167	6.7	56	-.03	47	-.11	2155	99	739	2.71	5.4	90	1.48	95	1.21	2.11	2246G
5	CO-OP BOSSIDE MASSEY-ET	TV TL 100-NA	1HO09527	6.2	60	.08	71	.09	1283	99	549	2.50	2.9	88	1.84	96	2.14	1.59	2239G
6	LOTTA-HILL SHOTTLE 41-ET	TR TV 100-NA	1HO09192	6.9	41	-.06	65	-.02	1900	99	536	2.70	4.2	87	2.54	95	2.94	1.87	2237G
7	LONG-LANGS OMAN OMAN 2-ETN	TV TL 100-NA	14HO06429	6.6	73	.13	81	.13	1262	99	1018	2.91	1.7	88	2.17	98	1.64	1.96	2185G
8	DE-SU GULF-ET	TR BY 100-NA	7HO10228	6.5	40	-.02	73	.07	1489	92	68	2.62	3.0	80	2.80	90	3.20	1.70	2178G
9	MORNINGVIEW LEVI	TV TL 100-NA	29HO13664																
10	ENSENADA TABOO PLANET-ET	TR TV 100-NA	7HO08081	6.1	66	.00	70	-.04	2216	99	3780	2.98	6.7	98	1.93	99	1.44	-0.47	2176G



謝謝



THANK YOU!



your **Prof't** partner™