

Black (Colored) Muscovy Duck



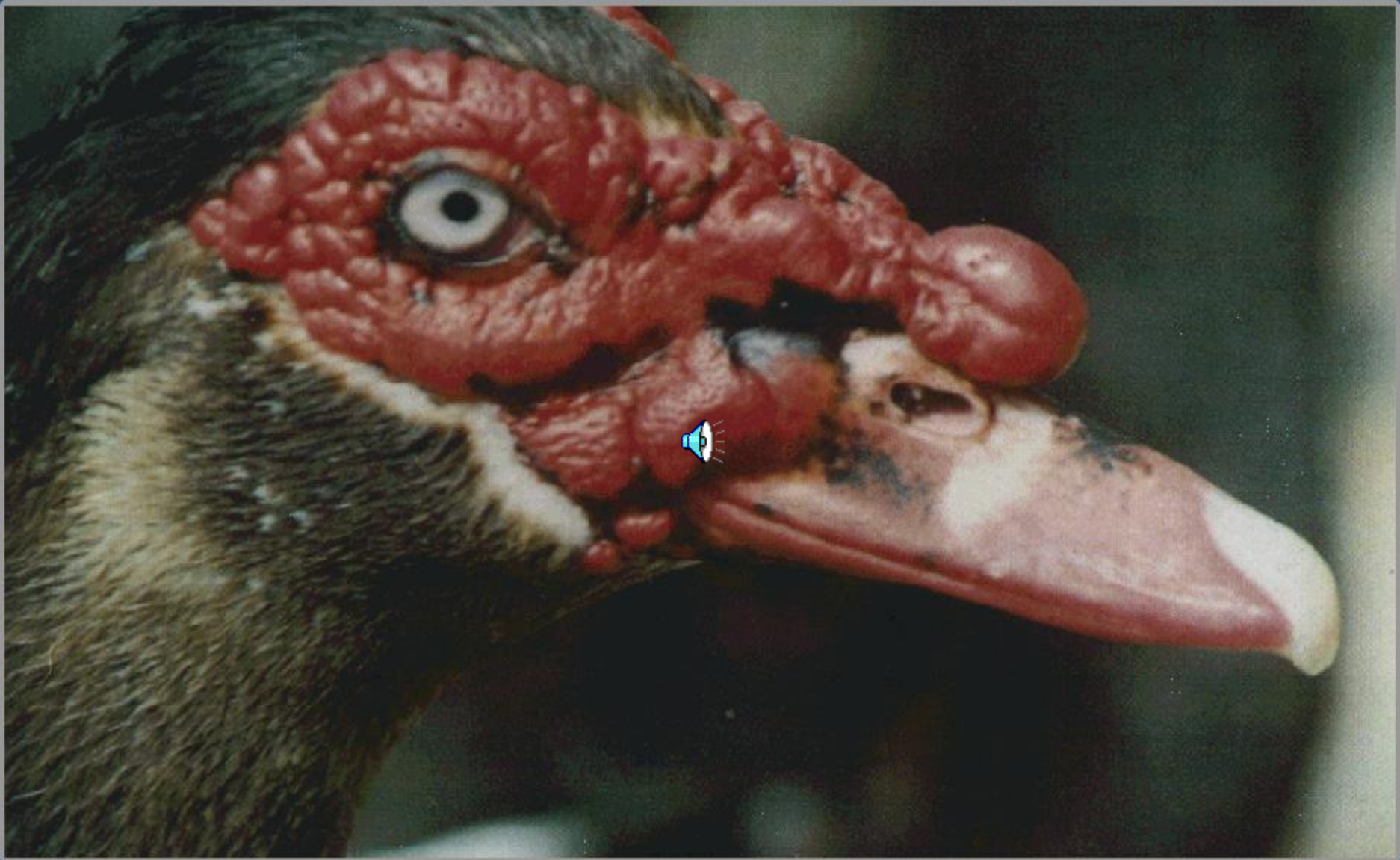
Drake

Black (Colored) Muscovy Duck



Hen

Black (Colored) Muscovy Duck



Bright red caruncles on face.

The bill is pinkish white with three vertical bands of black

Black (Colored) Muscovy Duck



Crown feathers on head and neck, stand up when frightened or aroused

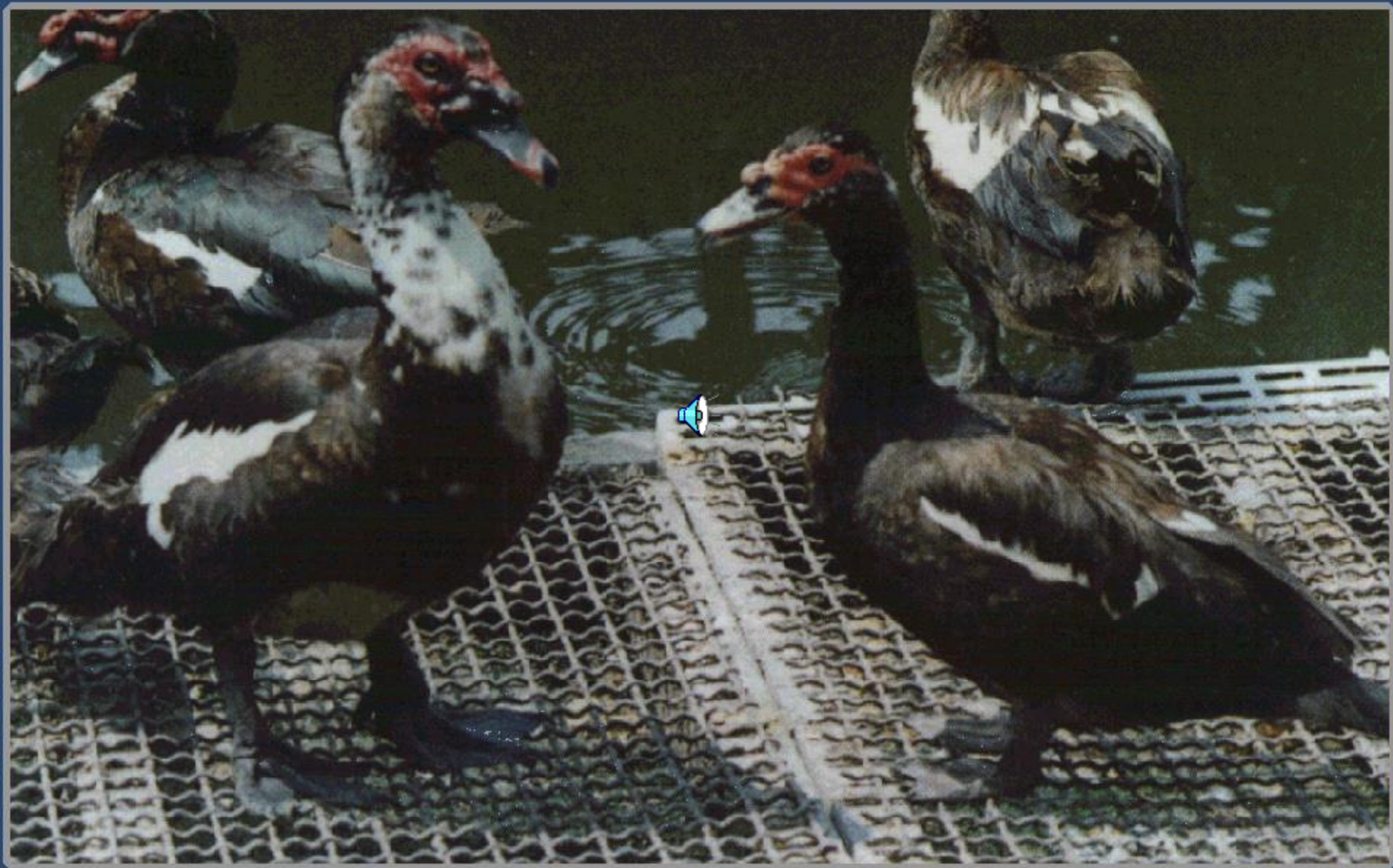
Black (Colored) Muscovy Duck



Drakes often fight over pecking order.

Adults generally have white patches on the wing covers, the breast, and occasionally on the neck.

Black (Colored) Muscovy Duck



The eyes are always brown and the beak always a solid black.

Black (Colored) Muscovy Duck



Females are very broody, laying 10 – 15 eggs in one clutch.

Black (Colored) Muscovy Duck



Strong wings, can fly close to ground.
Semiterrestrial, don't like to swim in water.

Black (Colored) Muscovy Duck

Growth Performance

Mean + SE

		Male	Female
Body weight at 10-week of age		<hr/>	
	18	2.40 ± 0.27 , 1.66 ± 0.13 Kg	
	28	2.95 ± 0.37 , 1.83 ± 0.22 Kg	
	36	3.34 ± 0.37 , 1.99 ± 0.19 Kg	
	52	3.56 ± 0.29 , 2.27 ± 0.17 Kg	
L. of 8th primary feather at		3.33 ± 0.28 , 1.94 ± 0.19 Kg	
	10 week old	14.2 ± 2.3	16.6 ± 1.1 cm
	18	25.4 ± 1.0	21.7 ± 1.0 cm
	28	24.6 ± 1.6	21.6 ± 0.7 cm

Black (Colored) Muscovy Duck

Laying Performance

Age at first egg : 27 weeks

First laying period : 30 to 60 weeks of age

Laying month with over 50% hen-day egg production : February to May

Hen-day egg production from 27 to 114 wk old : 30 %

Hen-day egg production from 27 to 114 wk old : peak at 36 wk old, 61 %

Egg weight at 30 wk old : 78.4 g

Egg weight at 40 wk old : 76.9 g

Black (Colored) Muscovy Duck

Living Habits

- 1. Drakes sound only a hiss.**
- 2. Muscovy hens make a loud noise if frightened.**
- 3. Usually can fly and rest upon walls.**
- 4. Drakes fight for territory or social dominance.**
- 5. Move slowly with back and tail flat.**
- 6. Muscovy hen has good brooding behavior but alert to arousing.**
- 7. More resistant to poor management.**
- 8. Semiterrestrial, not favorite for paddling.**