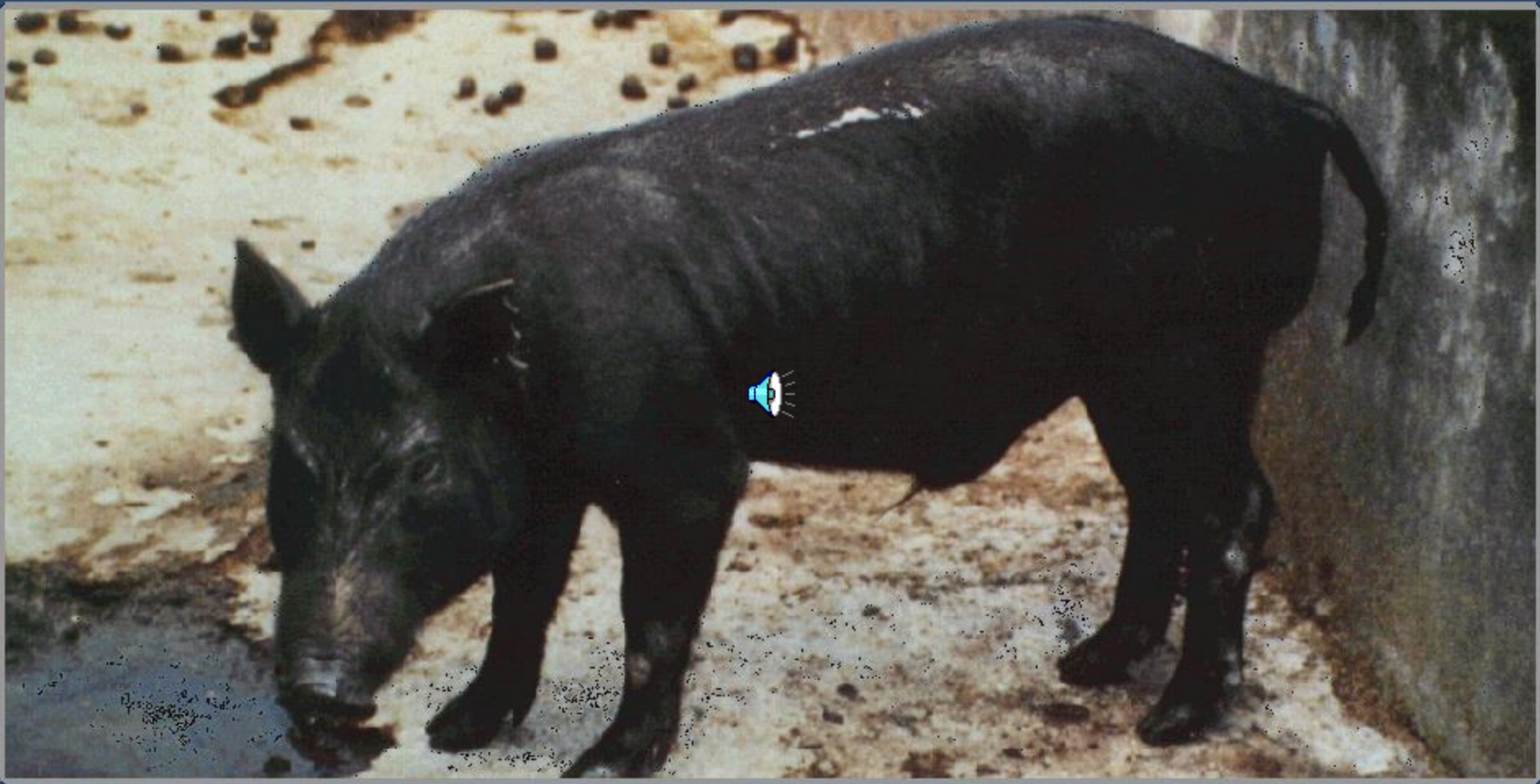


Lanyu Small-Ear Miniature Pig



Boar

Lanyu Small-Ear Miniature Pig



Sow

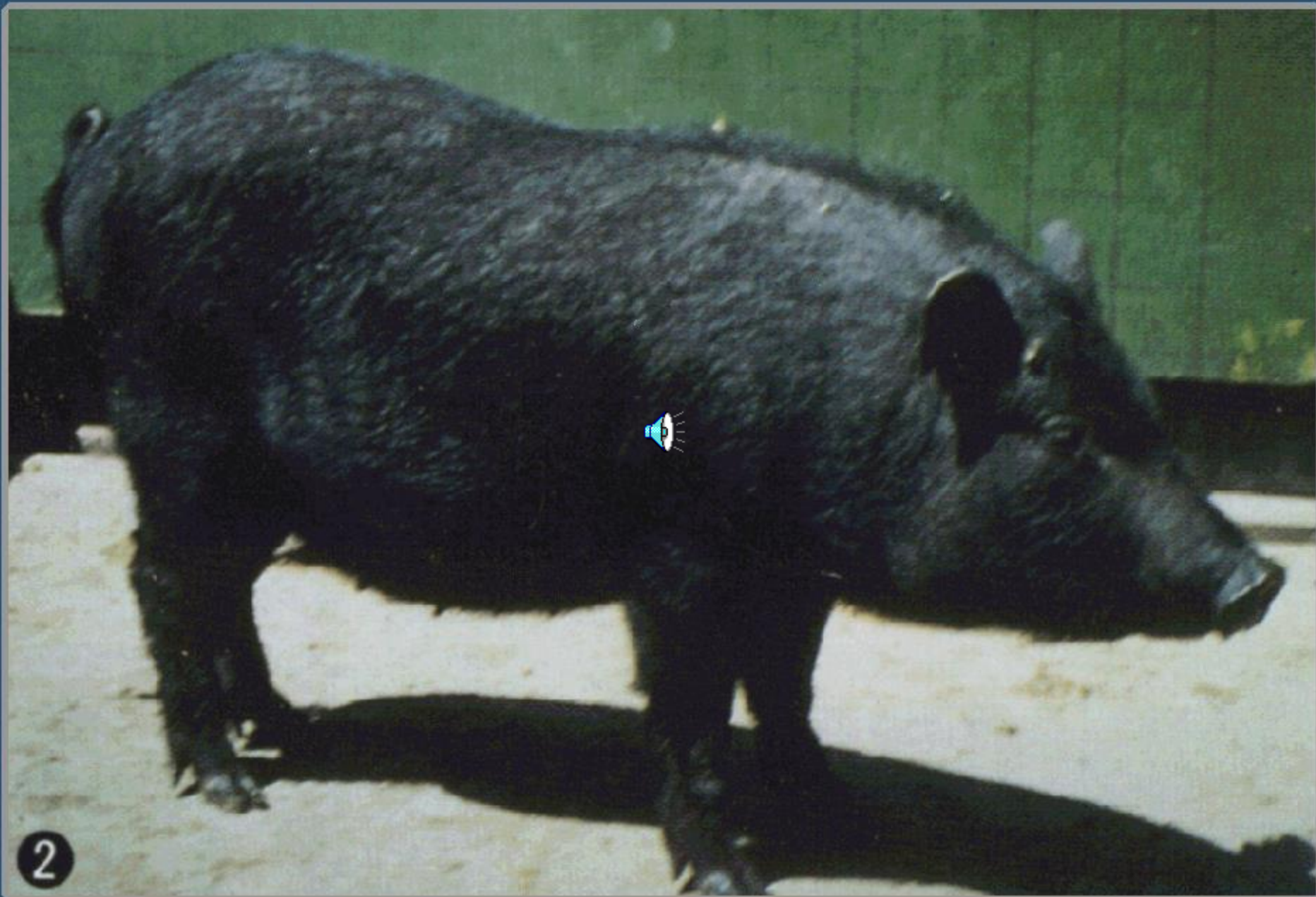
Lanyu Small-Ear Miniature Pig



1

Small Sticking-up ears

Lanyu Small-Ear Miniature Pig



Long face few wrinkles

Lanyu Small-Ear Miniature Pig



Solid black coat color with glossy skin and short hair

Lanyu Small-Ear Miniature Pig



Small in size and tail hangs down.

Lanyu Small-Ear Miniature Pig

Growth Performance


Mean + SD

Birth weight	0.67 ± 0.13 Kg
Body weight at 4-week of age	3.23 ± 0.75 Kg
Body weight at 8-week of age	5.49 ± 1.85 Kg
Body weight at 6-month of age	19.38 ± 7.74 Kg
Body weight at 1-year of age	45.62 ± 10.45 Kg
Survival rate at 3-week of age	85%
Survival rate at 8-week of age	80%
backfat thickness at 50 Kg alive wt.	- cm
Feed conversion from 10 to 50 Kg BW	3.18 ± 0.15 Feed/Gain
Dressing percentage	- %
Lean percentage	- %

Lanyu Small-Ear Miniature Pig

Reproductive

Performance

Gestation length	114±3 days
Number of teats at left	5.8±0.2 teats
Number of teats at right	5.9±0.2 teats
Frequency for pigs with ≥ 12 teats	— %
Litter size at birth	8.10 ± 2.87 heads 
Sex ratio at birth(male : female)	1.25 : 1.00
Litter size born alive	7.09 ± 2.74 heads
Litter size at 3-week of age	6.03 ± 2.73 heads
Litter size at 8-week of age	5.70 ± 2.31 heads

Lanyu Small-Ear Miniature Pig

CONFORMATION

MEASUREMENTS

Body length(the distance from the middle point between two earheads to tailhead)	84.1±3.99 cm
Withers height(the distance from shoulder-blades to ground)	50.5±2.48 cm
Head length(the distance from the middle point between two earheads to tips of nose)	27.9±1.60 cm
Head width(the widest area over the top of eyes)	10.9±0.51 cm
Number of ribs	14 pairs(10th to 14th ribs free to the sternum)

Lanyu Small-Ear Miniature Pig

Karyotyping

Number of chromosomes : 19 pairs (18+XY, 18+XX)

1 – 7 : Submetacentric chromosome

8 – 12 : Metacentric chromosome

13 – 18 : Telocentric chromosome

X : Meta - submetacentric chromosome

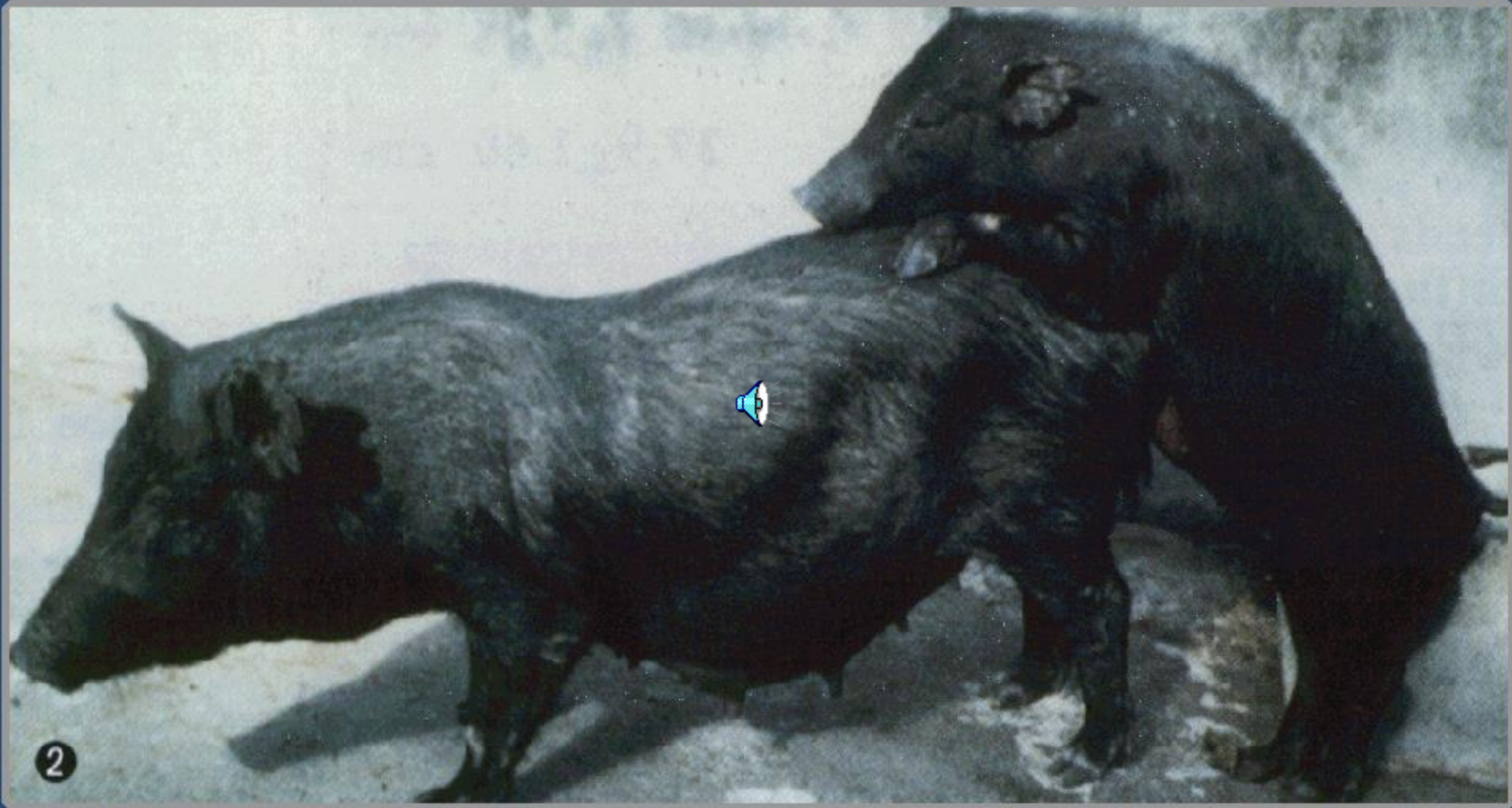
Y : Metacentric chromosome

Lanyu Small-Ear Miniature Pig



Can be raised in the rocky area and females build nests in holes after giving birth.

Lanyu Small-Ear Miniature Pig



Early mature and both sexes show mating behavior.

Lanyu Small-Ear Miniature Pig



Less prolific but good nursing ability

Lanyu Small-Ear Miniature Pig



Roughage tolerance.

Active and alert.