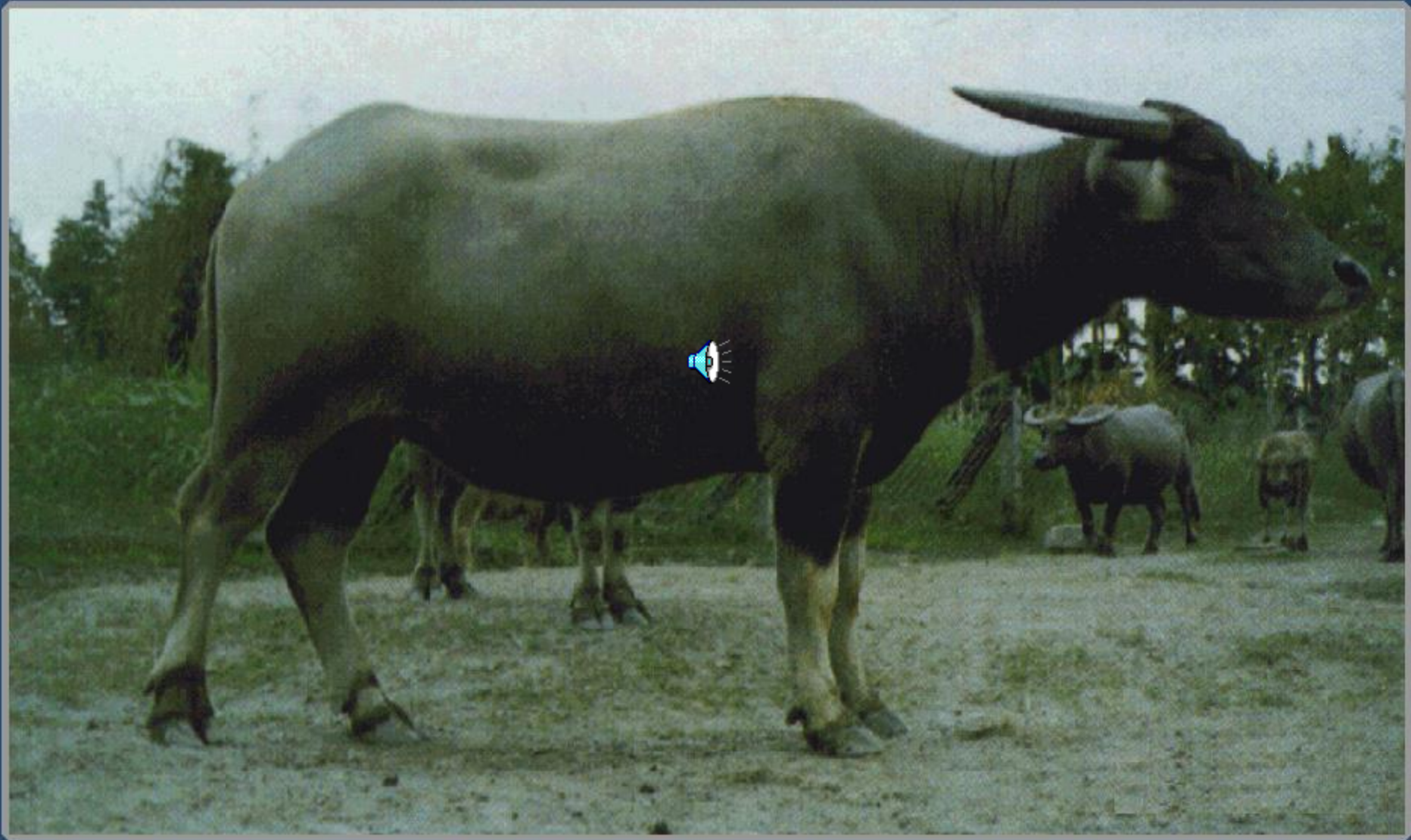


Water Buffalo (Swamp type)



Bull

Water Buffalo (Swamp type)



Cow

Water Buffalo (Swamp type)



Black or dark brown skin A white line beneath neck and throat

Water Buffalo (Swamp type)



Like to soak in water, accept sparse food. Poor heat tolerance.

Water Buffalo (Swamp type)



White from knee caps down. Swept back, crescent shape horns

Water Buffalo (Swamp type)




Gregarious, docile.

Water Buffalo (Swamp type)

Growth Performance


Mean + SD

Male birth weight	30.4 ± 2.0 Kg
Female birth weight	29.5 ± 0.7 Kg
Male weaning (205 days old) weight	172 ± 17 Kg
Female weaning weight 	150 ± 13 Kg
Male yearling weight	235 ± 24 Kg
Female yearling weight	306 ± 34 Kg
Male body weight at 2-year old	415 ± 23 Kg
Female body weight at 2-year old	398 ± 30 Kg
Survival rate 2-year of age	93 %
Dressing percentage	50.2 %

Water Buffalo (Swamp type)

Reproductive

Performance

Age at puberty	658 ± 27 days
Age at first parity	938 ± 26 days
Gestation length	321 ± 7 days
Sex ratio at birth(male : female)	1.11 : 1.00
Farrowing interval 	409 ± 50 days
Most frequent month for farrowing	May to October
Plasm progesterone at luteal phase	1.5 – 2.0 mg/ml
Fecal progesterone at luteal phase	150 – 200 mg/ml
Plasm progesterone at follicular phase	0.4 – 0.8 mg/ml
Fecal progesterone at follicular phase	50 – 100 mg/ml

Water Buffalo (Swamp type)


CONFORMATION

MEASUREMENTS

Body length(the distance from the middle point between two earheads to tailhead)	126 — 160 cm
Withers height(the distance from shoulder-blades to ground)	125 – 137 cm
Chest girth(the circumference of chest which measured over back shoulder and foreflank)	185 – 215 cm
Chest width (the widest area over the rump)	41 – 49 cm
Chest depth(the height over the chest)	67 – 77 cm

Water Buffalo (Swamp type)

Tooth Structure

Age at 2 teeth		32 – 44 months
Age at 4 teeth		40 – 54 months
Age at 6 teeth		51 – 60 months
Age at 8 teeth		56 – 66 months