

Yellow Cattle, Taiwan Zebu



Bull

Yellow Cattle, Taiwan Zebu



Cow

Yellow Cattle, Taiwan Zebu



Coat color varied with yellow, red, brown, black and gray.

Yellow Cattle, Taiwan Zebu



Coat color varied with yellow red brown black and gray

Yellow Cattle, Taiwan Zebu



Coat color varied with yellow, red, brown, black and gray.

Bull has larger pointed shoulder than cow has.

Yellow Cattle, Taiwan Zebu



GOLDEN - GATE ISLAND

Coat color varied with yellow, red, brown, black and gray.

Yellow Cattle, Taiwan Zebu



GOLDEN - GATE ISLAND

Coat color varied with yellow, red, brown, black and gray

Yellow Cattle, Taiwan Zebu



Coat color varied with yellow, red, brown, black and gray

Yellow Cattle, Taiwan Zebu



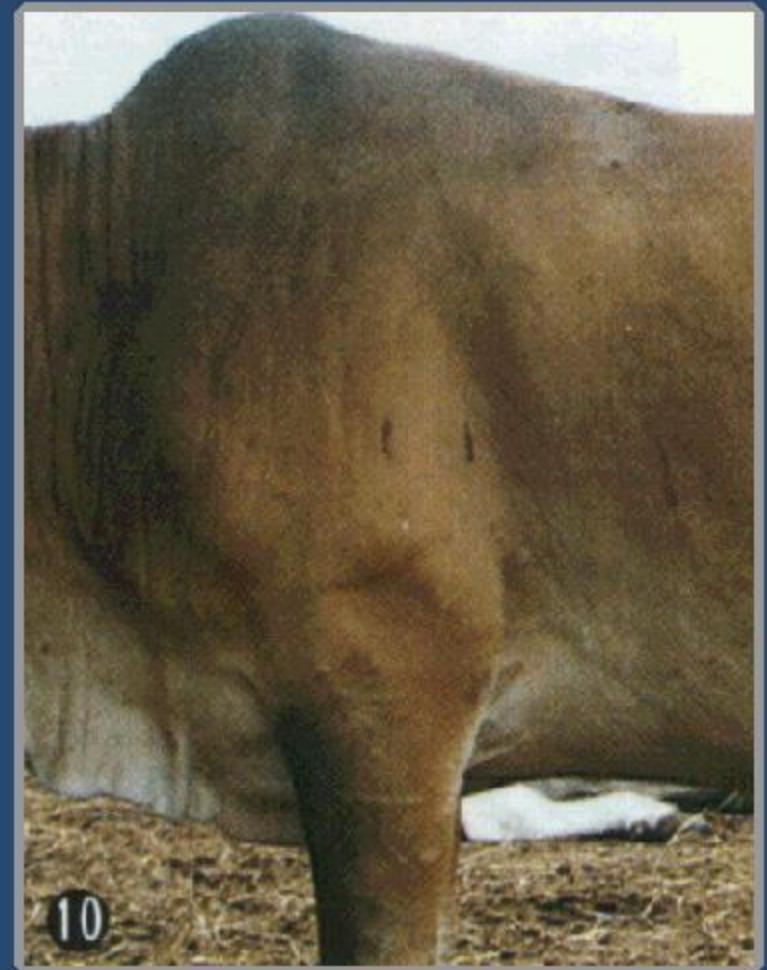
Bull has larger pointed shoulder than cow has

Yellow Cattle, Taiwan Zebu



Bull has larger pointed shoulder than cow has.

Yellow Cattle, Taiwan Zebu



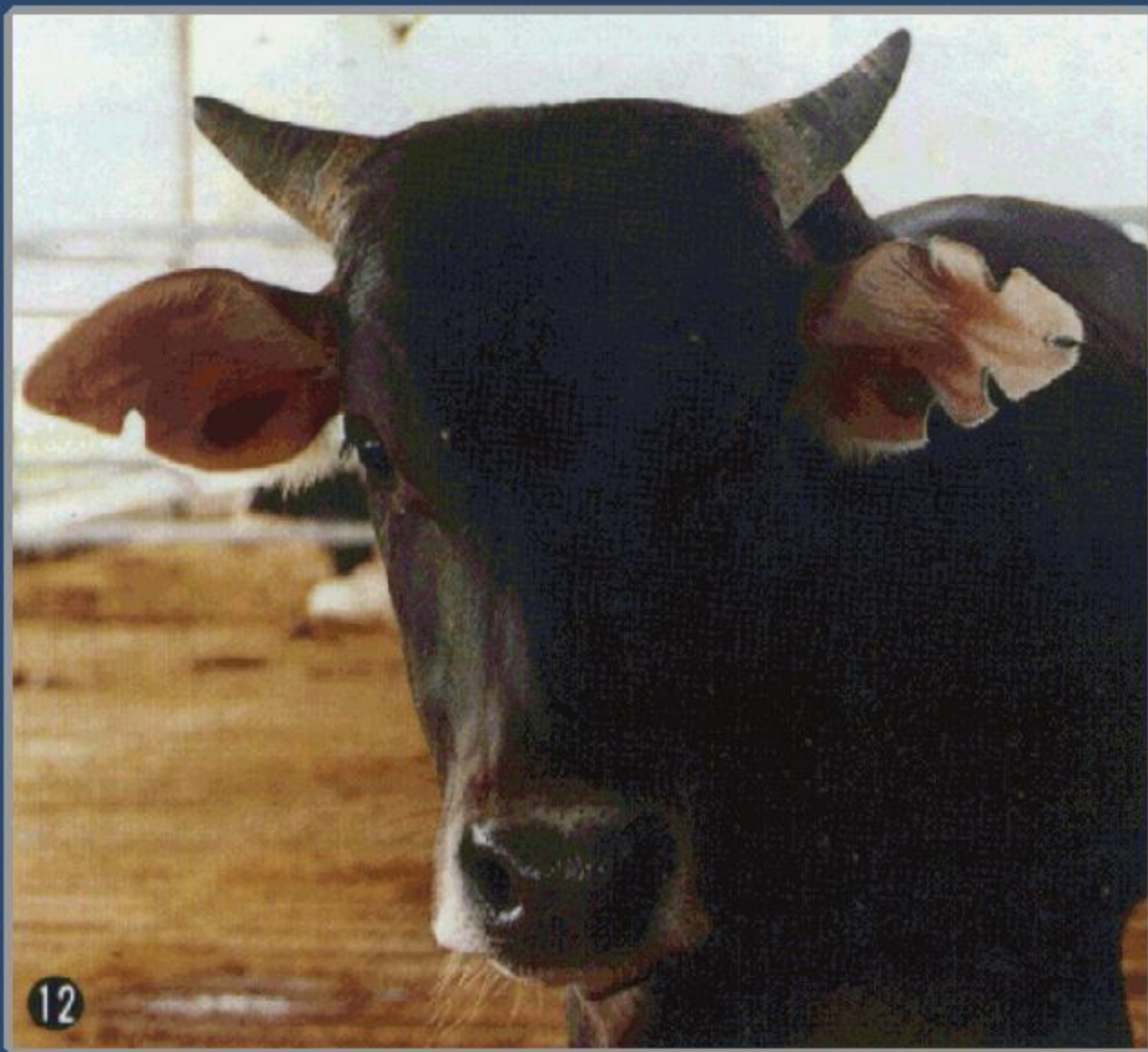
Bull has larger pointed shoulder than cow has.

Yellow Cattle, Taiwan Zebu



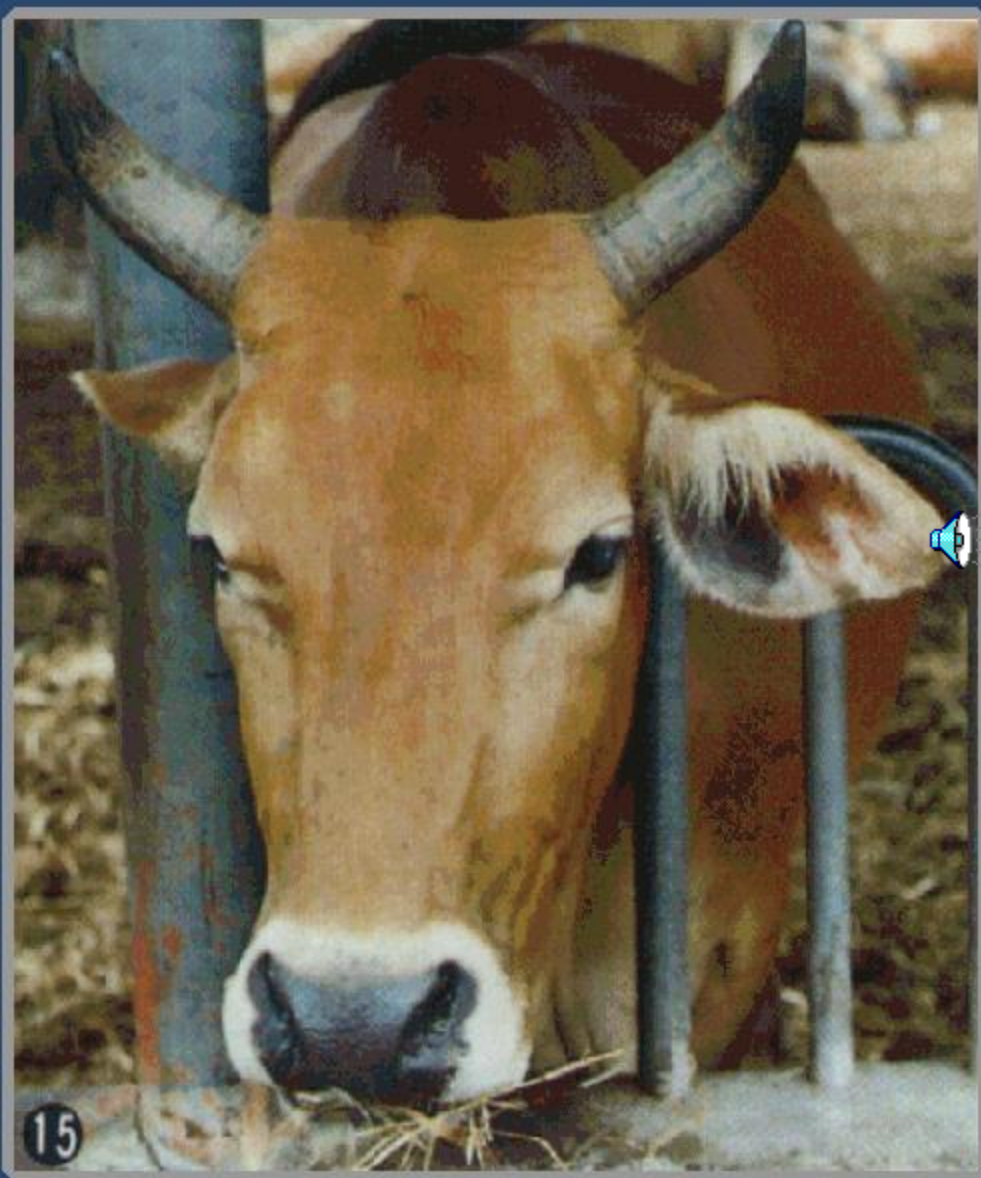
Cow has a small horn-base with sweptfore, crescent-shaped horns.
Hornbase with coarse and ring-type wrinkles.

Yellow Cattle, Taiwan Zebu

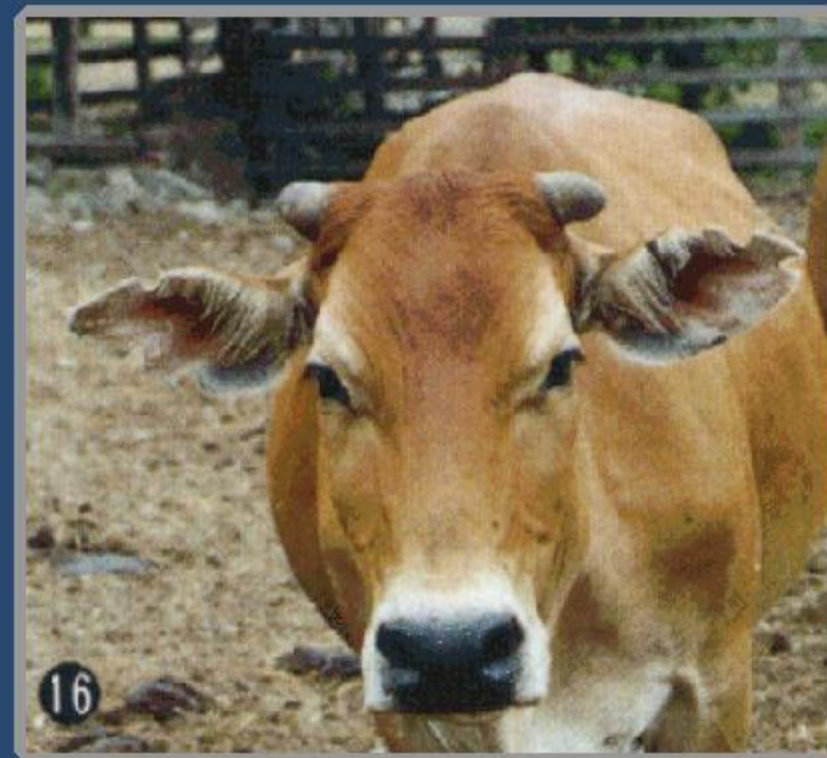


Hornbase with coarse and ring-type wrinkles.

Yellow Cattle, Taiwan Zebu



Small, thin ears but not hanging .



**Black snout with light
black at edge.**

Yellow Cattle, Taiwan Zebu



Small, thin ears but not hanging .

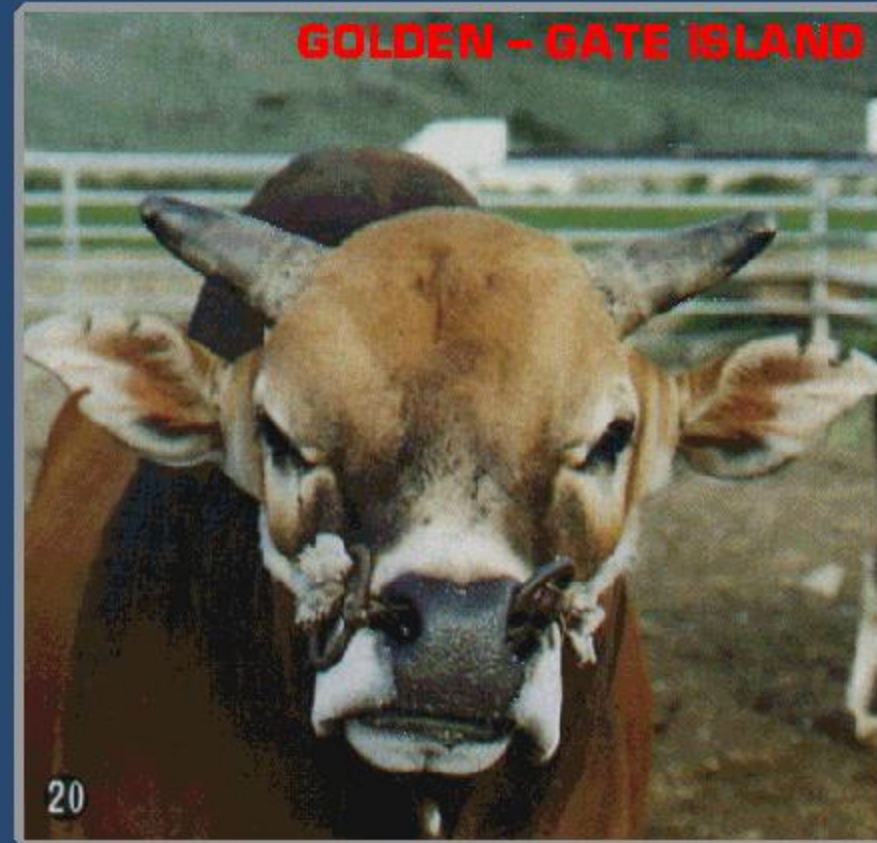
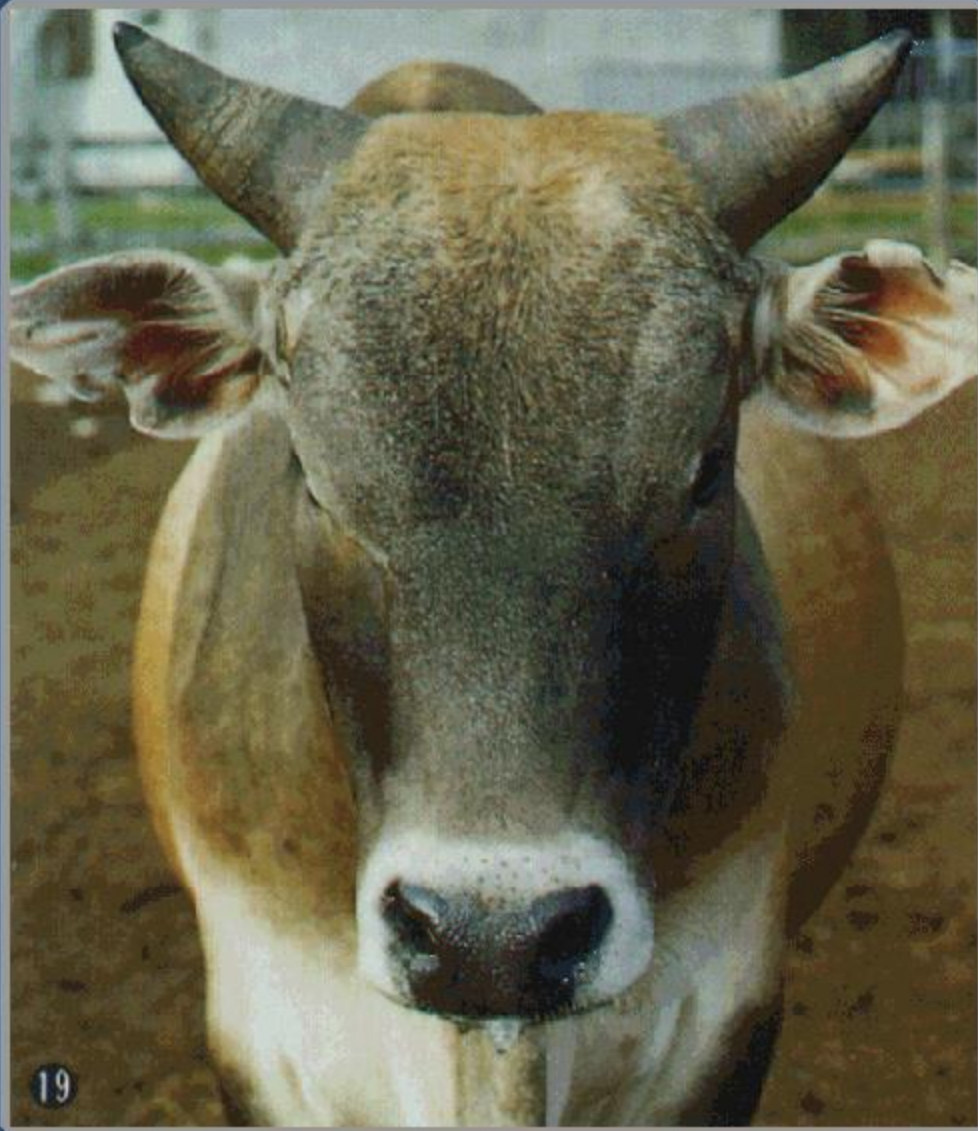
Black snout with light black at edge.

Bull has a large sweptout, crescent-shaped horns.

Hornbase with coarse and ring-type wrinkles.

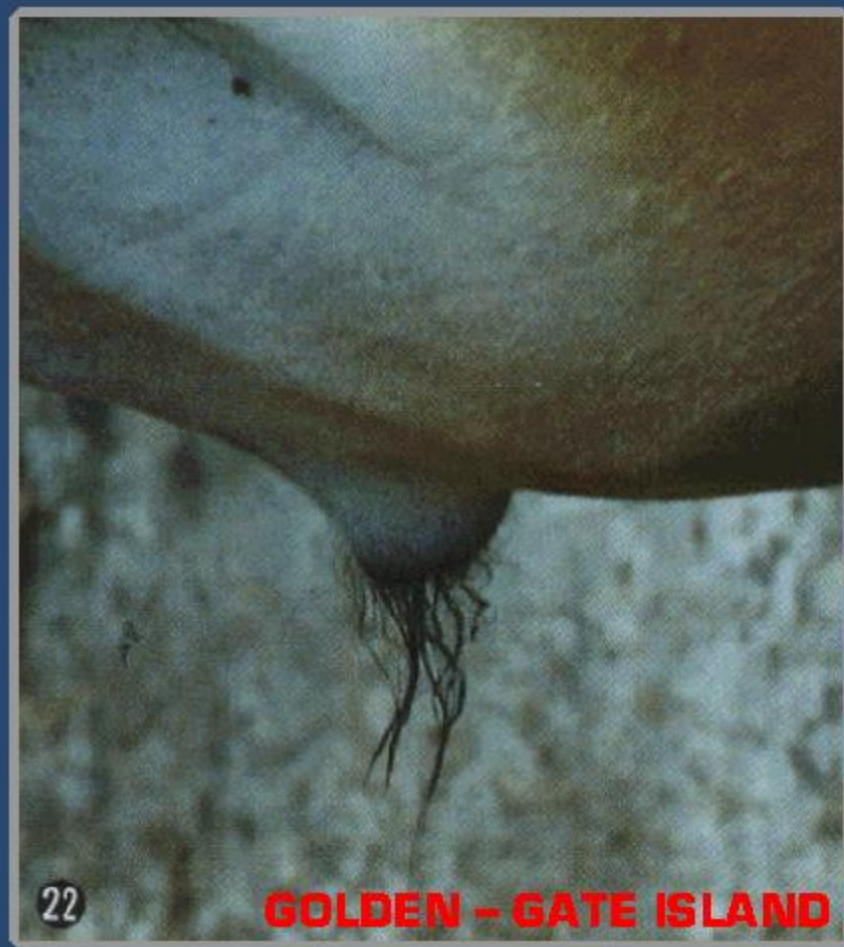
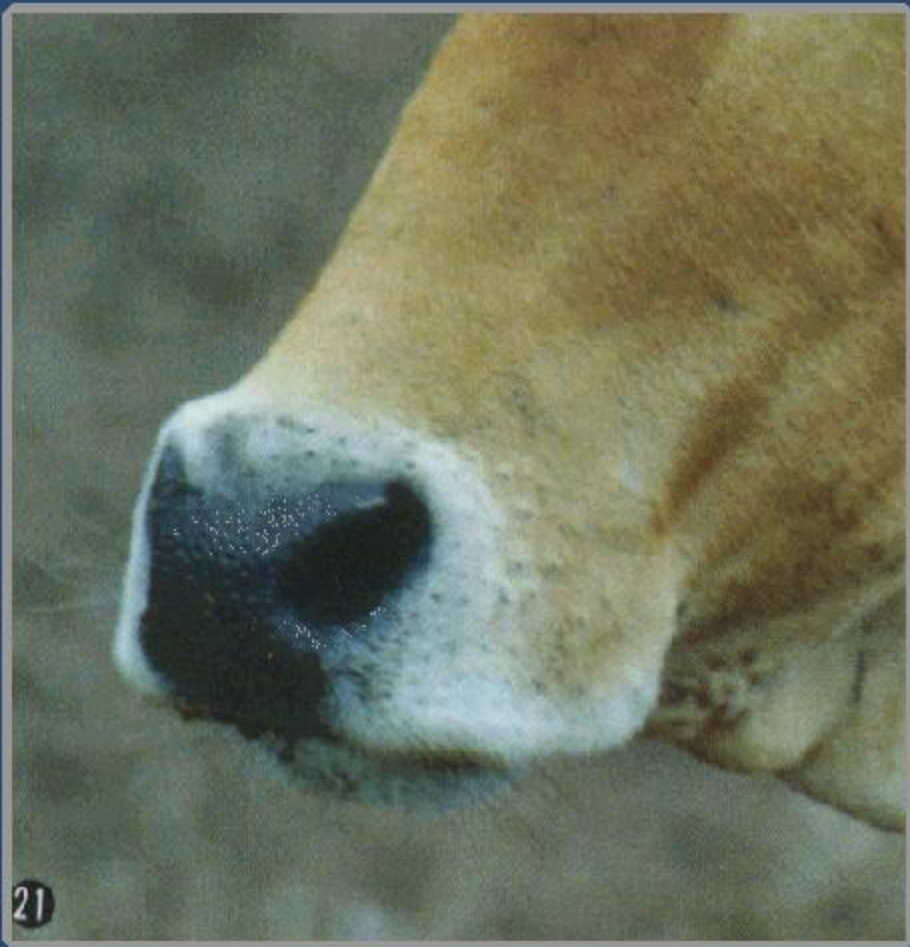


Yellow Cattle, Taiwan Zebu



Bull has a large sweptout, crescent-shaped horns.

Yellow Cattle, Taiwan Zebu

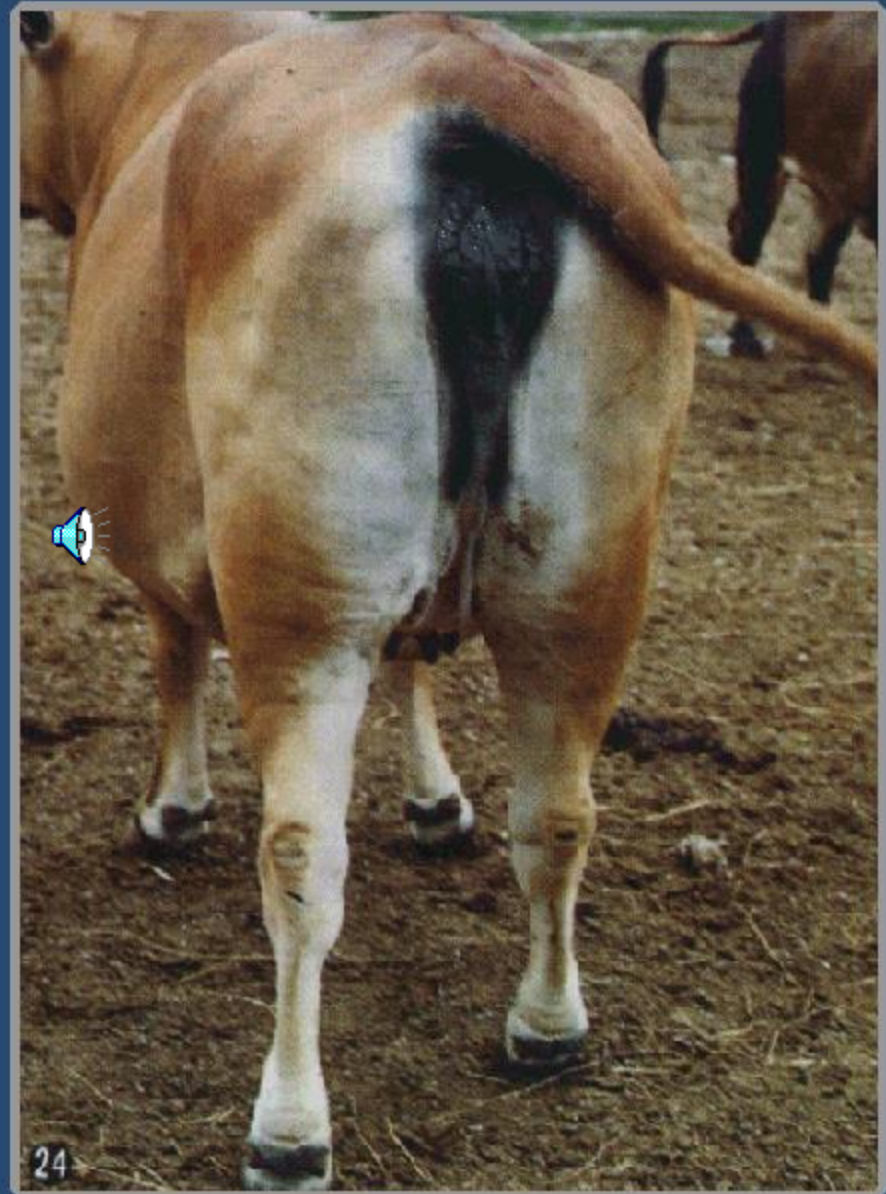
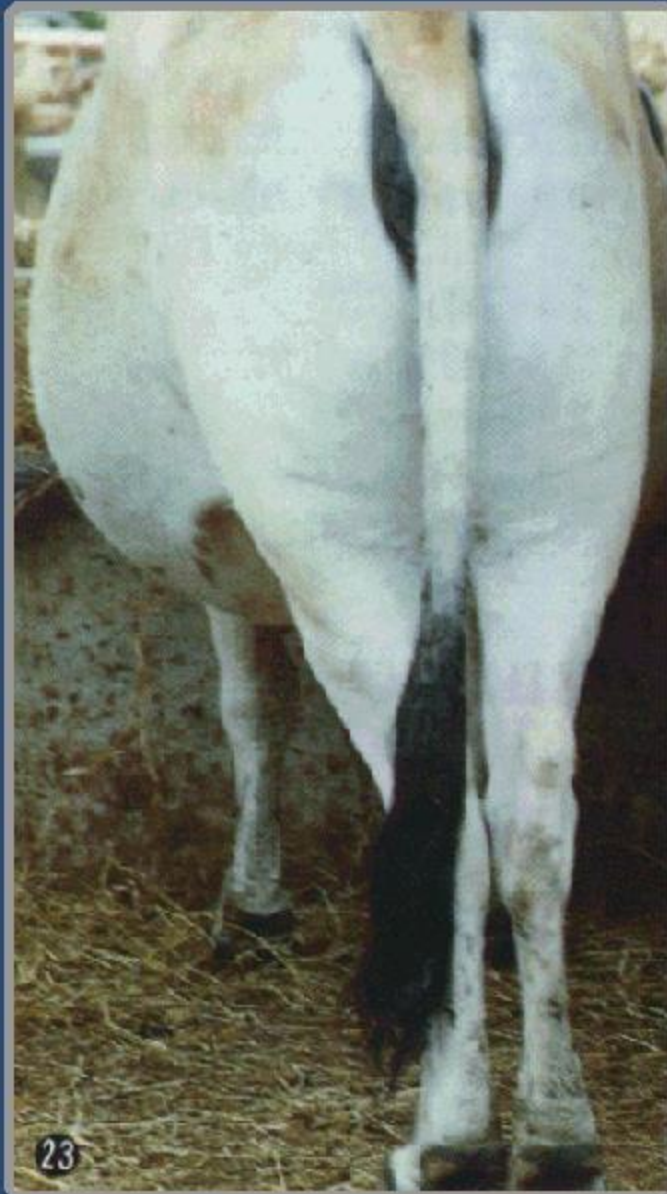


GOLDEN - GATE ISLAND

Black snout with light black at edge.

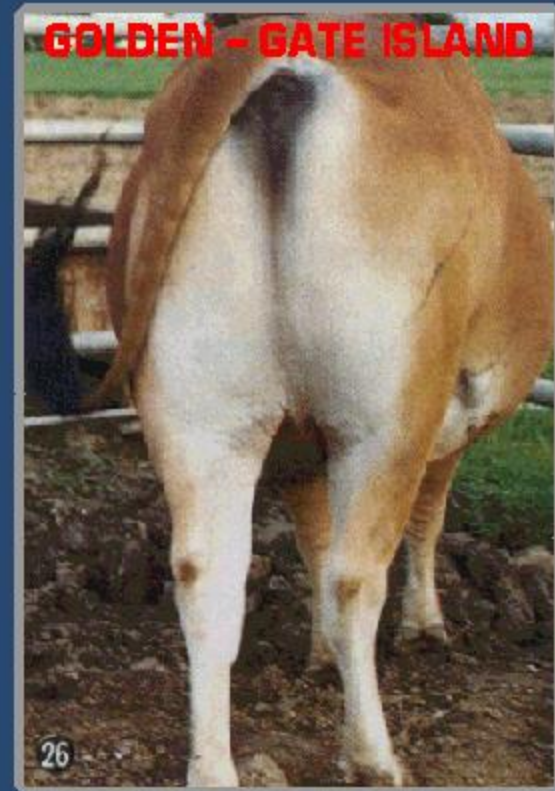
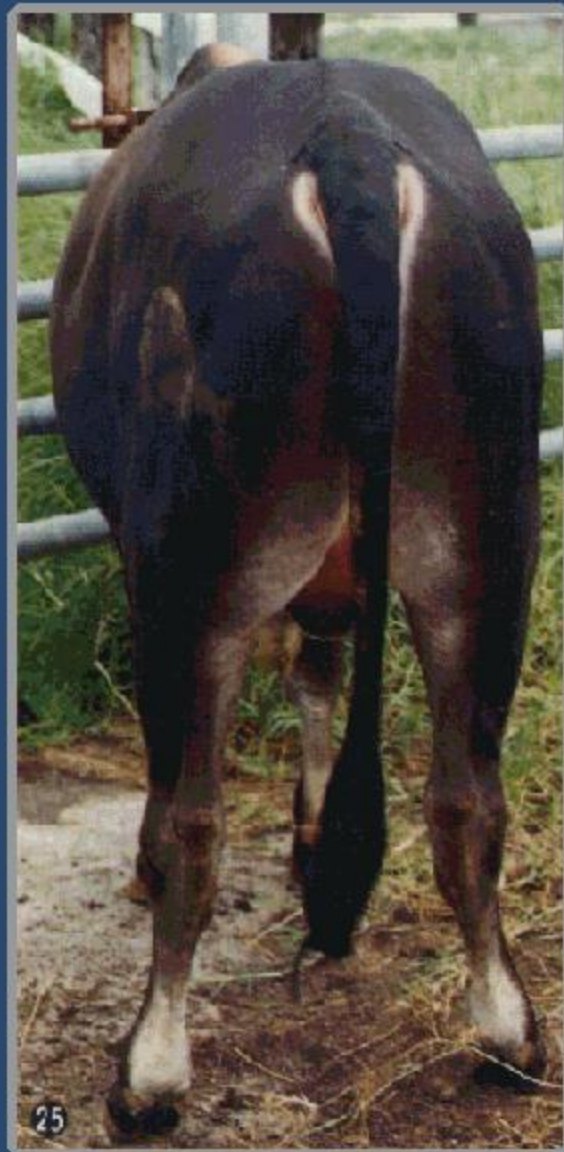
Bull prepuce is short and doesn't droop.

Yellow Cattle, Taiwan Zebu



Tip of tail dark brown or black

Yellow Cattle, Taiwan Zebu



Belly, inside of legs and rearside of hindlegs are paler than the rest of the body

Water Buffalo (Swamp type)

Growth Performance

Mean + SE

Birth weight	23.46 ± 4.50 Kg
Body length at birth	58.77 ± 4.52 cm
Withers height at birth	64 ± 4 cm
Hip height at birth	66 ± 4 cm
Chest girth at birth	65 ± 5 cm
Body weight at weaning(205 days old)	130 ± 36 Kg
Hip height at weaning	97 ± 5 cm
Scrotal circumference at weaning	16.87 ± 3.84 cm
Yearling weight	223 Kg
Feed conversion(gain/dry feed)	0.096 Kg

Male

Water Buffalo (Swamp type)

Growth Performance

Mean + SE

Birth weight	20.71 ± 3.12 Kg
Body length at birth	55.18 ± 3.19 cm
Whithers height at birth	63 ± 3 cm
Hip height at birth	65 ± 3 cm
Chest girth at birth	62 ± 4 cm
Body weight at weaning(205 days old)	122 ± 30 Kg
Hip height at weaning	96 ± 6 cm
Scrotal circumference at weaning	16.87 ± 3.84 cm
Yearling weight	218 Kg
Feed conversion(gain/dry feed)	0.079 Kg

Female

Water Buffalo (Swamp type)

Reproductive Performance

Age at puberty	421 ± 64 days
Body weight at first parity	310 ± 43 Kg
Mature weight of cows	393 ± 63 Kg
Length of estrous cycle	20 – 26 days
Gestation length	285 ± 4 days

Water Buffalo (Swamp type)

Milk Production

Length of lactation : 200 – 210 days

Daily milk yield : 2.7 Kg

Milk fat : 5.0 %

Protein : 4.36 %

Lactose : 4.34 %

Acidity : 0.14 %

Milk pH : 6.1

Gravity : 1.033

Water Buffalo (Swamp type)

Living Habits

1. Docile.
2. Heat tolerance. 
3. Accept coarse food and tick - resistant.