

# Black Goat



Buck



# Black Goat



Doe



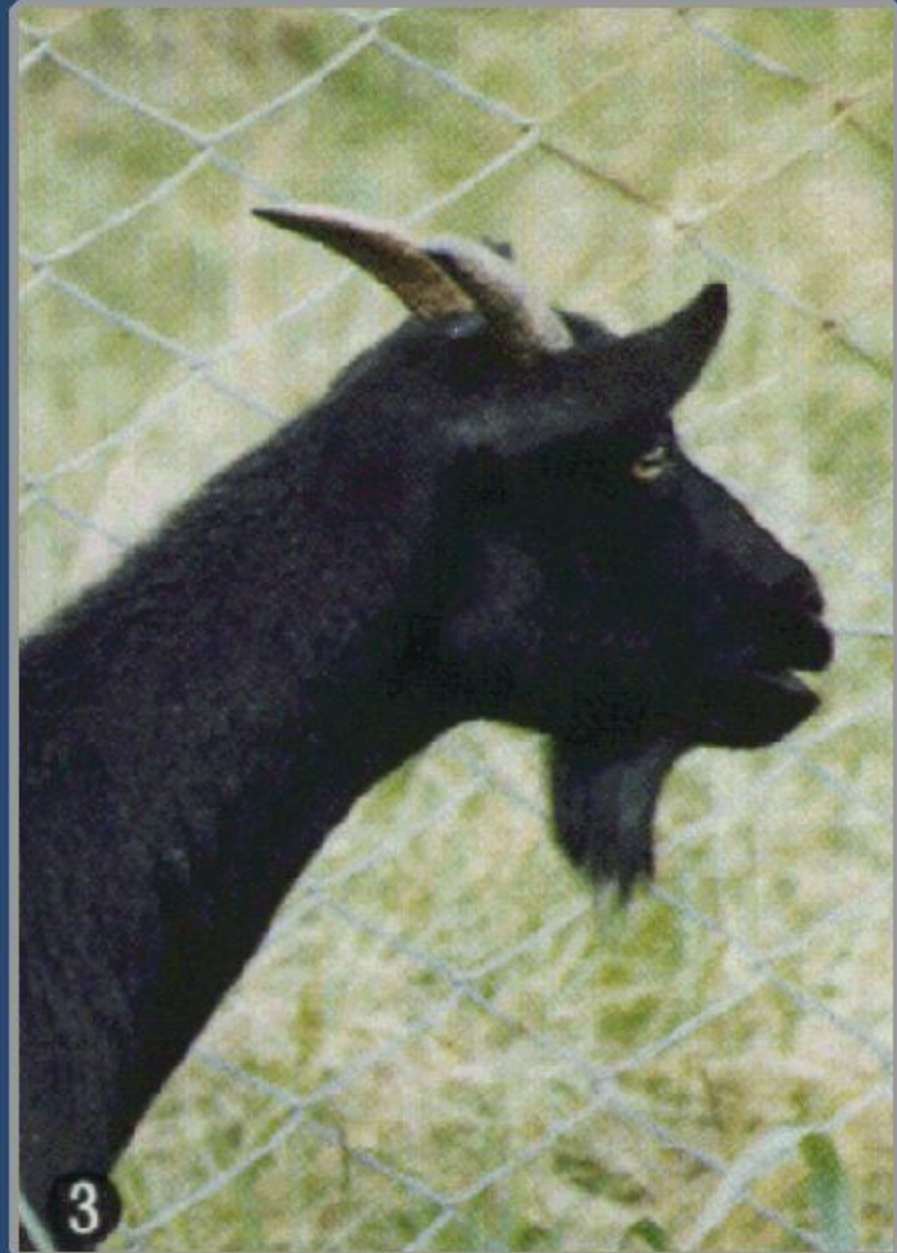
# Black Goat



Coat color is solid black or dark brown with no white spots.



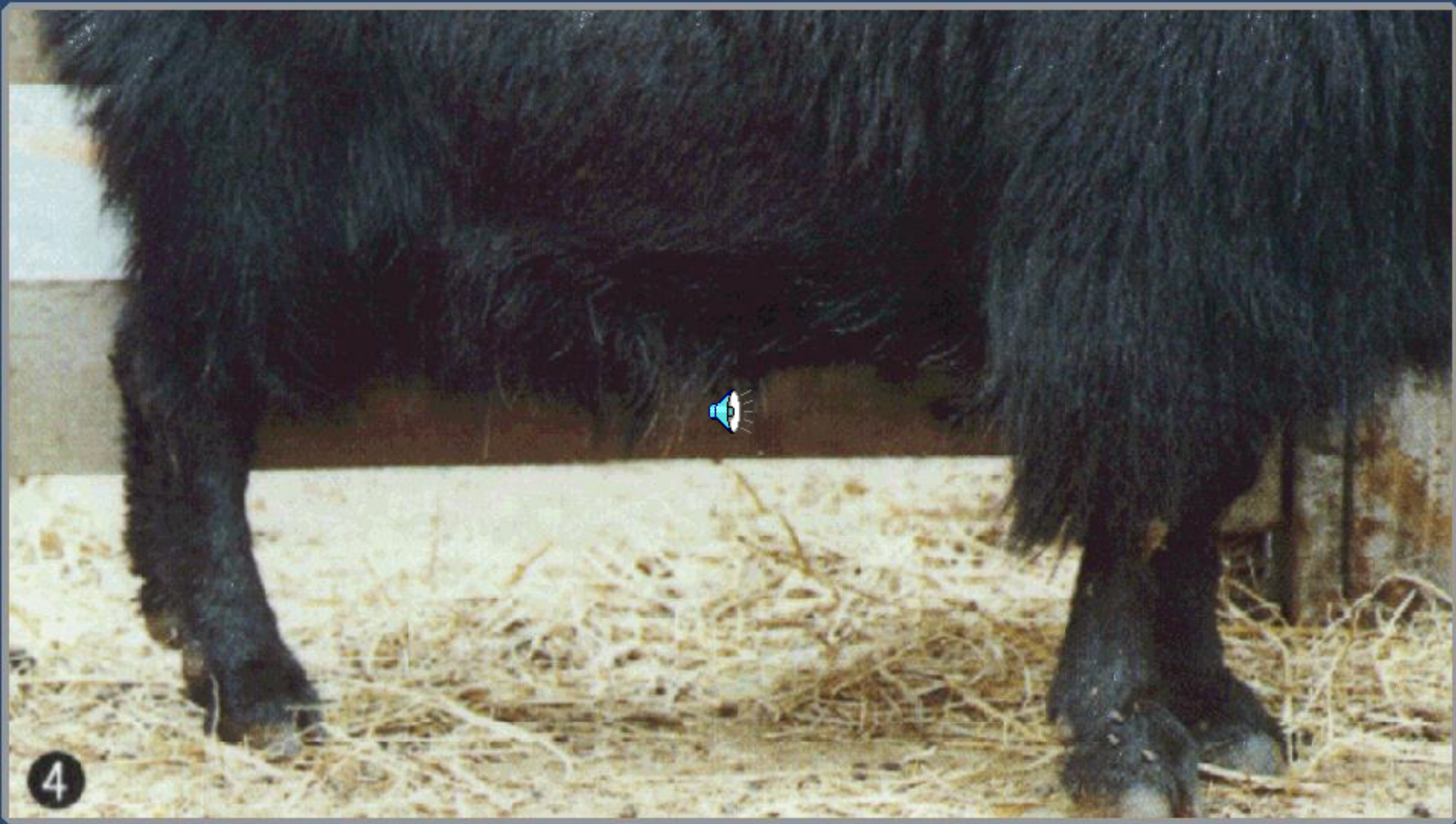
# Black Goat



Both sexes are horned with 15-20 cm long. Females have beards



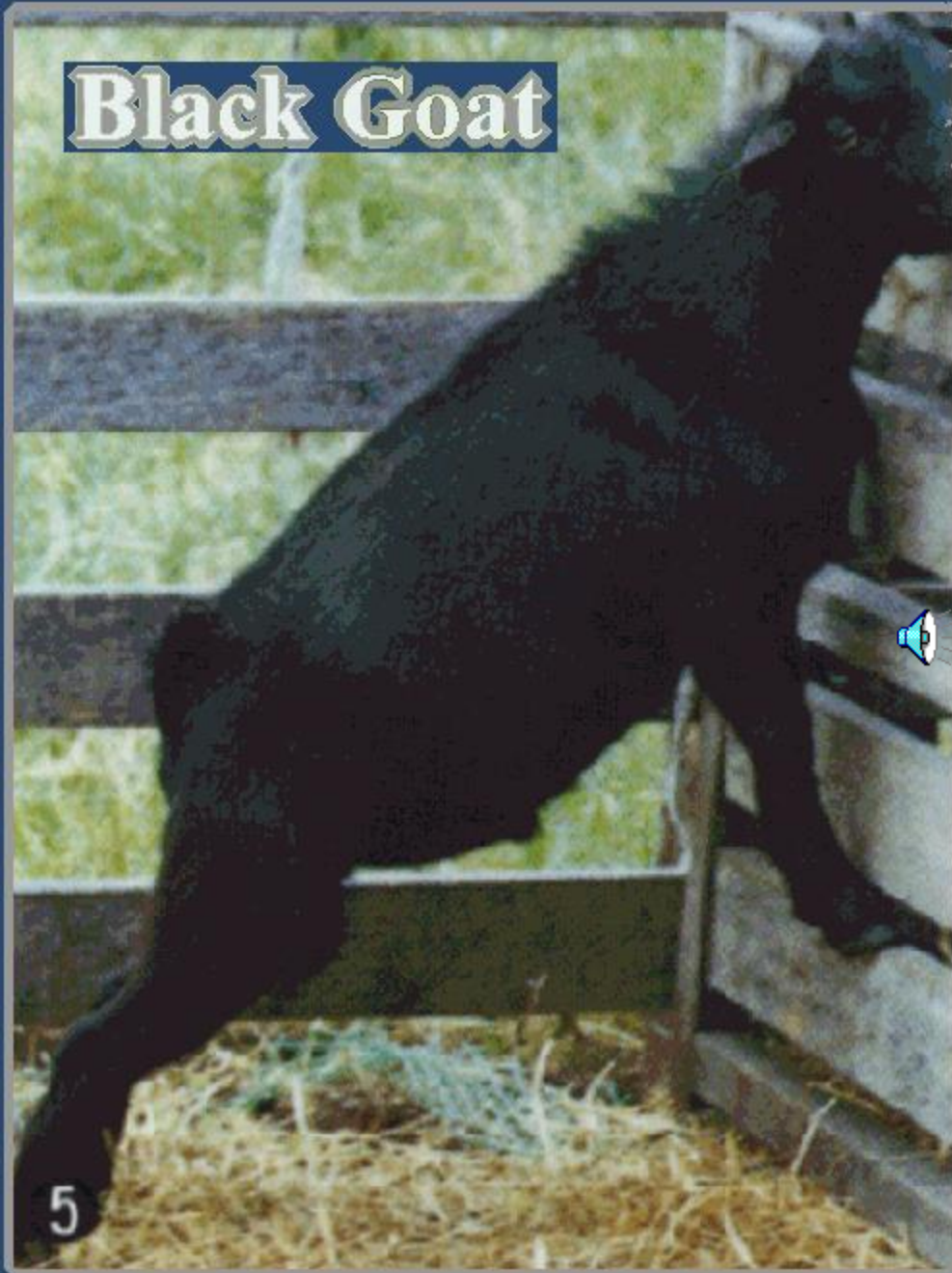
# Black Goat



**Bucks have long hairs.**



## Black Goat

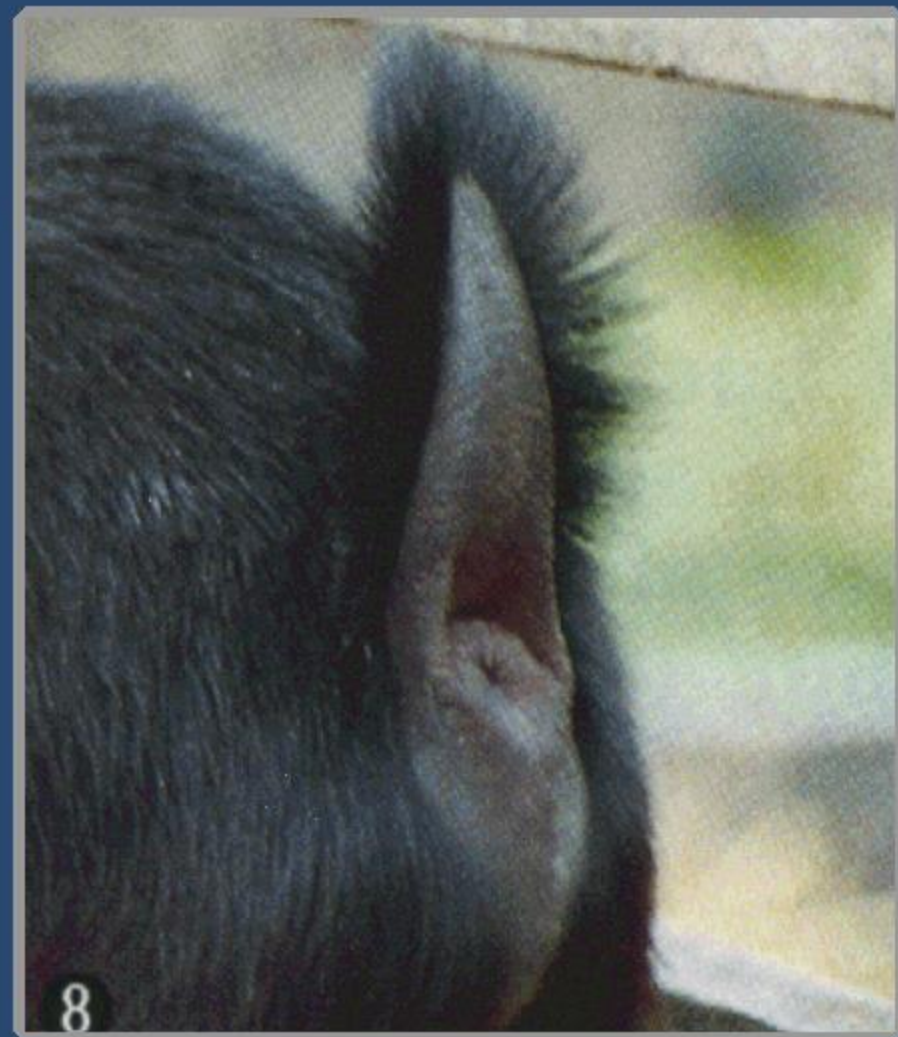


Young goats not yet have beards.

Active, like to climb rocks and heights



# Black Goat



Does have short hairs over the body.

Short tail but erect.



# Black Goat



**Mature early, nonseasonal breeding.**



# Black Goat

## Growth Performance

## Mean + SD

Male birth weight	2.7±0.3 Kg
Female birth weight	2.6±0.5 Kg
Male weaning weight	13.7±1.6 Kg
Female weaning weight	11.9±0.7 Kg
Average daily gain before weaning(M)	0.13±0.03 Kg
Average daily gain before weaning( F)	0.11±0.01 Kg
Male mature weight	64.1±5.4 Kg
Female mature weight	44.8±5.9 Kg
Average daily gain at postweaning	0.20 Kg (M)
Postweaning feed conversion	6.20 Feed/Gain (M)
Dressing percentage	48.4 % (M)
Lean percentage	32.9 % (M)



# Black Goat

## Reproductive Performance

Age at puberty of bucks	135 ± 13 days
Pubertal weight of bucks	19.1 ± 4.0 Kg
Scrotal circumference at puberty	19.4 ± 1.9 cm
Scrotal circumference at maturity	22.5 ± 2.1 cm
Interval from kidding to recycling	34.6 ± 11.4 days
Kidding rate by 100 does	161.3 %
Singling rate	41.9 %
Twinning rate	54.8 %
Tripling rate	3.3 %



# Black Goat

## CONFORMATION


## MEASUREMENTS

<b>Body length</b> (the distance from the middle point between two earheads to tailhead)	<b>88.1 ± 3.6 cm (M)</b>
	<b>67.1 ± 3.8 cm (F)</b>
<b>Withers height</b> (the distance from shoulder-blades to ground)	<b>76.2 ± 4.5 cm (M)</b>
	<b>67.1 ± 3.8 cm (F)</b>
<b>Chest girth</b> (the circumference of chest measured over back shoulder and foreflank)	<b>100.0 ± 4.2 cm (M)</b>
	<b>85.4 ± 4.6 cm (F)</b>



# Black Goat

## Milk Production

Length of lactation		150 days
Daily milk yield		$0.82 \pm 0.37$ Kg
Milk fat		$5.5 \pm 0.3$ %